

**TENNESSEE BOARD OF NURSING  
STATE APPROVED PROFESSIONAL NURSING PROGRAMS  
ANNUAL REPORT 2006**

**PREPARED BY:  
EAST TENNESSEE STATE UNIVERSITY  
COLLEGE OF NURSING  
CENTER FOR NURSING RESEARCH**

**PATRICIA L. SMITH, EdD, MSN, RN  
DEBI T. PFORTMILLER, MA**

**UNDER CONTRACT WITH:  
THE TENNESSEE CENTER FOR NURSING**

**Table of Contents:**

Highlights..... 4

1. PARENT INSTITUTION AND PROGRAM CHARACTERISTICS

Table 1a. Administrative Control of Parent Institution ..... 7

Table 1b. Total Nursing Programs Offered in Tennessee and Administrative Control of Parent Institution ..... 7

Table 1c. Total Schools in Tennessee by Type of Program and Accreditation Status ..... 7

Table 1d. Programs/Tracks/Specialties Currently Offered and Programs Plan to Offer..... 8

Table 1e. Programs/Tracks Currently Offered ..... 9

2. ENROLLMENT AND GRADUATION DATA

Table 2a. Associate Degree Enrollment..... 10

Table 2b. Associate Degree Enrollment Demographics ..... 11

Table 2c. Diploma Program/Associate Degree Graduate Demographics..... 12

Table 2d. Diploma Program/Associate Degree Enrollment Trends ..... 13

Figure 2d. Associate Degree Enrollment Trend Line ..... 14

Table 2e. Diploma Program/Associate Degree Graduation Trends..... 15

Figure 2e. Associate Degree Graduation Trend Line..... 16

Table 2f. Baccalaureate Degree Enrollment ..... 17

Table 2g. Baccalaureate Degree Enrollment Demographics ..... 19

Table 2h. Baccalaureate Degree Graduate Demographics ..... 21

Table 2i. Baccalaureate Degree Enrollment and Graduation Trends ..... 23

Figure 2i-1. Baccalaureate Degree Enrollment Trend Line..... 25

Figure 2i-2. Baccalaureate Degree Graduation Trend Line ..... 26

Table 2j. Master of Science Degree Enrollment..... 27

Table 2k. Master of Science Degree Enrollment Demographics ..... 28

Table 2l. Master of Science Degree Graduate Demographics..... 29

Table 2m. Master of Science Degree Enrollment Trends ..... 30

Figure 2m. Master of Science Degree Enrollment Trend Line ..... 31

Table 2n. Master of Science Degree Graduation Trends..... 32

Figure 2n. Master of Science Degree Graduation Trend Line ..... 33

Table 2o. Master of Science Degree and Post-Master’s Certificate Enrollment and Graduation by Specialty ..... 34

Table 2p. Initial RN Licensure Enrollment Demographics..... 35

Table 2q. Initial RN Licensure Graduate Demographics..... 37

Table 2r. Doctoral Degree Program Available Degrees and Specialty Focus ..... 39

Table 2s. Doctoral Degree Enrollment Demographics..... 39

Table 2t. Doctoral Degree Graduate Demographics..... 39

Table 2u. Doctoral Degree Enrollment and Graduation Trends..... 40

Figure 2u-1. Doctoral Degree Enrollment Trend Line ..... 41

Figure 2u-2. Doctoral Degree Graduation Trend Line..... 42

Table 2v. Number of Programs Reporting Significant Change (>10%) in Enrollment ..... 43

<b>3. AVAILABILITY OF CLINICAL RESOURCES</b>	
Table 3a. Number of Schools Reporting Adequate Clinical Resources Available to Meet Needs of Undergraduate Curriculum.....	44
Table 3b. Main Factors Perceived as Creating the Limited Clinical Resources .....	44
Table 3c. Average Faculty-Student (Undergraduate) Clinical Ratio .....	44
<b>4. PROGRAM EVALUATION</b>	
Table 4a. Average Retention Rates of Each Class of Graduates.....	45
Table 4b. Summary of Assessment/Proficiency Test of Exiting Undergraduate Students .....	45
Table 4c. Number of Schools Reporting Relationship between Assessment and NCLEX Pass Rate .....	45
<b>5. FACULTY SUMMARY</b>	
Table 5a. Number of Full-time and Part-time (Headcount and FTE) Faculty by School.....	46
Table 5b. Faculty Status Demographics Summary of All Schools.....	48
Table 5c. Number of Budgeted Unfilled Full-time Nurse Faculty Positions for 2006-2007 Academic Year .....	48
Table 5d. Number of Full-time Faculty Who Retired or Resigned .....	49
Table 5e. Summary of Faculty Teaching Responsibilities Outside Area of Master's Specialization .....	50

## Highlights

- The findings in this report are based on the 39 Schools of Nursing in Tennessee that offer Associate, Baccalaureate, or graduate degree nursing programs. The schools were surveyed in Fall 2006 and the report is based upon October 2006 data. Of these 39 Schools of Nursing, 19 are affiliated with public colleges and universities, 14 are within private-religious institutions, and six (6) are under the administrative control of private-independent colleges and universities.

### Enrollment as of October 15, 2006

- A total of 3,089 students are enrolled in the 14 Associate Degree Programs in Tennessee; 12% are male and 12% are from racial and ethnic minorities.
- A total of 3,786 students are enrolled in the 24 Baccalaureate Initial RN Licensure programs and 848 are enrolled in the 20 RN-BSN programs for a grand total of 4,634 Baccalaureate Degree nursing students. Males account for 11% of all BSN nursing students and 20% are from racial and ethnic minorities.
- A total of 343 students are enrolled in two (2) Master's for Initial RN Licensure programs, 1,185 in sixteen Master's Degree programs, and 36 in ten (10) Post-Master's Certificate programs for a grand total of 1,564 Master's Degree/Post-Master's Certificate nursing students. Males account for 12% of all MSN nursing students and 15% are from racial and ethnic minorities.
- A total of 201 students are enrolled in four (4) Doctoral Degree programs; 9.5% are male and 18% are from racial and ethnic minorities.

### Graduations from October 16, 2005 – October 15, 2006

- A total of 14 students graduated from the Diploma program; this program has closed.
- A total of 1,193 students graduated from Associate Degree programs; 12% were male and 12% were from racial and ethnic minorities.
- A total of 1,207 students graduated from Baccalaureate Initial RN Licensure programs and 302 graduated from RN-BSN programs for a grand total of 1,509 Baccalaureate Degree nursing graduates. Males accounted for 11% of all BSN graduates and 17% were from racial and ethnic minorities.
- A total of 154 students graduated from the Master's for Initial RN Licensure programs, 345 from Master's Degree programs and 24 completed Post-Master's Certificates for a grand total of 523 Master's Degree/Post-Master's Certificate nursing graduates. Males accounted for 12% of all MSN graduates and 12% were from racial and ethnic minorities.
- A total of 17 students graduated from the Doctoral Degree programs; 6% were male and 23% were from racial and ethnic minorities.

### Year 2010 Goals from "Curing the Crisis in Nursing Education: A Master Plan for Tennessee"

- The goal for ADN graduations by 2010 is 1,234; 96.7% of that goal was reached by the 1,193 ADN graduates in 2005-2006.
- The goal for BSN Initial Licensure graduations by 2010 is 1,957; 60.2% of that goal was reached by the 1,178 BSN Initial Licensure graduates in 2005-2006.
- The goal for MSN Initial Licensure by 2010 is 236; 65.3% of that goal was reached by the 154 MSN Initial Licensure graduates in 2005-2006.
- The goal for RN-BSN graduations by 2010 is 466; 63.1% of that goal was reached by the 294 RN-BSN graduates in 2005-2006.
- The goal for RN-MSN graduations by 2010 is 512; 67.4% of that goal was reached by the 345 RN-MSN graduates in 2005-2006.
- The goal for Doctoral graduations by 2010 is 44; 38.6% of that goal was reached by the 17 Doctoral graduates in 2005-2006.

#### Two-year Comparisons in Enrollment (Based on data from the same institutions reporting in both 2005 and 2006)

- Enrollment in all Associate Degree programs has increased by 1.6% (50 students) over the past two years ( $p=.749$ ).
- Enrollment in Baccalaureate Initial RN Licensure programs has increased by 7.0% (247 students) and the RN-BSN enrollment has increased by 14% (102 students). Enrollment in all Baccalaureate Degree programs has significantly increased by 8% (349 students) over the past two years ( $p=.050$ ).
- Enrollment in the Master's for Initial RN Licensure programs has decreased by 8% (29 students) and the RN-MSN enrollment has increased by 25% (240 students). Enrollment in all Master's Degree/Post-Master's Certificate programs has significantly increased by 15.4% (209 students) over the past two years ( $p=.031$ ).
- Enrollment in the Doctoral Degree programs has increased by 28% (44 students) over the past 2 years ( $p=.298$ ).
- Overall enrollment in all nursing programs in Tennessee has increased significantly by 7% over the past two years ( $p=.004$ ).

#### Five-year Comparisons in Enrollment (Based on data from the same institutions reporting in all years 2002-2006)

- Enrollment in all Associate Degree programs has significantly increased by 32% (751 students) over the past five years ( $p=.003$ ). The average increase over the five years is approximately 6.4% (150 students) per year.
- Enrollment in all Baccalaureate Degree programs has significantly increased by 82% (2,093 students) over the past five years ( $p=.002$ ). The average increase over the five years is approximately 16.4% (419 students) per year.
- Enrollment in all Master's Degree/Post-Master's Certificate programs has significantly increased by 99% (780 students) over the past five years ( $p=.022$ ). The average increase of the five years is approximately 20% (156 students) per year.
- Five year data are not available for Doctoral Degree programs. However, enrollment in the four Doctoral Degree programs has increased by 76% (87 students) over the past three years ( $p=.245$ ). The average increase over the three years is approximately 25% (29 students) per year.
- Overall enrollment in all nursing programs in Tennessee has significantly increased by 62% over the past five years ( $p<.001$ ). The average increase over the five years is approximately 12.4% per year.

#### Two-year Comparisons in Graduations (Based on data from the same institutions reporting in both 2005 and 2006)

- The number of graduates in all Associate Degree programs has increased by 2% (21 students) over the past two years ( $p=.822$ ).
- The number of graduates in Baccalaureate Initial RN Licensure programs has increased by 26% (246 students), and RN-BSN graduates have decreased by 0.3% (1 student). The number of graduates in all Baccalaureate Degree programs has significantly increased by 19.4% (245 students) over the past two years ( $p=.018$ ).
- The number of graduates in the Master's for Initial RN Licensure programs has increased by 6% (9 students) and RN-MSN graduates have increased by 0.3% (1 student). The number of graduates in all Master's Degree/Post-Master's Certificate programs has decreased by 1% (6 students) over the past two years ( $p=.746$ ).
- The number of graduates in the Doctoral Degree programs has decreased by 34.6% (9 students) over the past two years ( $p=.575$ ).
- Overall, the number of graduates in all nursing programs in Tennessee has increased by 5% over the past two years ( $p=.366$ ).

#### Three-year Comparisons in Graduations (Based on data from the same institutions reporting in all years 2004-2006)

- The number of graduates in all Associate Degree programs has increased by 20% (197 students) over the past three years ( $p=.066$ ). The average increase over the three years is approximately 6.7% (66 students) per year.
- The number of graduates in all Baccalaureate Degree programs has significantly increased by 48% (488 students) over the past three years ( $p=.002$ ). The average increase over the three years is approximately 16% (163 students) per year.
- The number of graduates in all Master's Degree/Post-Master's Certificate programs has increased by 28.5% (116 students) over the past three years ( $p=.131$ ). The average increase of the three years is approximately 9.5% (39 students) per year.
- The number of graduates in the Doctoral Degree programs has decreased by 5.6% (1 student) over the past three years ( $p=.622$ ).
- Overall, the number of graduates in all nursing programs in Tennessee has significantly increased by 29% over the past three years ( $p=.001$ ).

#### Retention Rates

- The average retention rate of all Associate Degree programs was 73.9%.
- The average retention rate of all Baccalaureate Degree programs was 88.6%.
- The average retention rate of all Master's Degree programs was 93.6%.

#### Faculty Summary

- For all 39 Schools of Nursing, there are 756 full-time Nursing Faculty and 380 part-time (headcount) Nursing Faculty for a total of 1,136 Nursing Faculty. Of those 1,136, 12% are from racial and ethnic minorities.
- Twenty schools (51.3%) reported having a total of 45 budgeted, unfilled full-time nursing faculty positions. Of those 20 schools, 10 (50%) are from public institutions.
- Of the 39 Schools of Nursing, eight (8) (20.5%) schools reported a total of eight Nurse Faculty retirements.
- Of the 39 Schools of Nursing, 24 (61.5%) schools reported a total 70 Nurse Faculty resignations. Four of those are due to the closing of the Diploma program. The most frequent reasons reported for Nurse Faculty resignations were career advancement, return to clinical practice, and family responsibilities.

## 1. PARENT INSTITUTION AND PROGRAM CHARACTERISTICS

**Table 1a. Administrative Control of Parent Institution  
for Nursing Schools in Tennessee**

Administrative Control	Number of Parent Institutions
Private (Independent)	6
Private (Religious)	14
Public	19
<b>TOTAL</b>	<b>39</b>

**Table 1b. Total Nursing Programs Offered in Tennessee and Administrative Control of Parent Institution**

Type of Program	Number of Programs Currently Offered	Administrative Control of Parent Institution		
		Private (Independent)	Private (Religious)	Public
Associate Degree	14	1	3	10
Baccalaureate Degree	28	5	13	10
Master's Degree	16	2	5	9
Post-Master's Certificate <sup>a</sup>	10			
Doctoral Degree	4	1	0	3
<b>TOTAL</b>	<b>62</b>			

<sup>a</sup>Not included in total because already counted in Master's Degree

**Table 1c. Total Schools in Tennessee by Type of Program and Accreditation Status**

Type of Program	Number of Programs Currently Offered	Number Accredited			Number Not Accredited
		NLNAC	CCNE	Both	
Associate Degree	14	13	0	0	1 <sup>a</sup>
Baccalaureate Degree	28	8	14	2	4 <sup>a</sup>
Master's Degree	16	6	8	0	2 <sup>a</sup>
Doctoral Degree	4	Does not apply			
<b>TOTAL</b>	<b>62</b>	<b>27</b>	<b>22</b>	<b>2</b>	<b>7</b>

<sup>a</sup>New program(s)

**Table 1d. Programs/Tracks/Specialties Currently Offered and Programs Plan to Offer**

<b>Programs/Tracks/Specialties</b>	<b>Number Currently Offered</b>	<b>Number Plan to Offer (Within 3 Years)</b>
LPN to Associate Degree Program	13	
Associate Degree	14	
Basic BSN Degree	24	
Accelerated Second-Degree BSN	5	
LPN to BSN Degree	6	3
RN to BSN Degree	22	3
Non-RN to MSN (Initial licensure)	2	
Basic MSN Degree	16	1
ADN/Diploma RN to MSN	4	
Dual Degree MSN (please specify)		
MSN/MBA	3	
MSN/MDIV	1	
MSN/MTS	1	
Post-Master's Certificate (please specify)		
FNP	8	1
Nurse Educator	3	
All specialty areas	2	
CNS	2	
Nurse Anesthetists	2	
Psychiatric	2	
Acute Care	1	
Adult	1	
ANP	1	
Geriatric	1	
Holistic Nursing	1	
Neonatal	1	
Nursing Administration	1	
Doctoral Degree (please specify)		
DNP	1	3
DSN	1	
PhD	3	
Other Programs (please specify)		
Paramedic to RN	1	

**Table 1e. Programs/Tracks Currently Offered**

<b>Programs/Tracks</b>	<b>Number of Programs/Tracks</b>	<b>Traditional Day Classes</b>	<b>Evening Classes Only</b>	<b>Weekend Classes Only</b>	<b>Online Courses Available</b>	<b>Entire Program Online</b>
LPN to Associate Degree	13	10	2	2	2	0
Associate Degree	14	14	2	1	3	0
Basic BSN Degree	24	20	2	0	8	0
Accelerated Second-Degree BSN	5	5	0	0	5	0
LPN to BSN Degree	6	5	1	1	4	0
RN to BSN Degree	22	13	8	1	12	3
Non-RN to MSN (Initial licensure)	2	1	0	0	1	0
Basic MSN Degree	16	8	2	1	8	6
ADN/Diploma RN to MSN	6	2	1	1	2	1
Post-Master's Certificate	10	6	1	1	5	0
Doctoral Degree	4	2	0	0	3	0
Other (please specify)						
Paramedic to RN	1	1	0	0	0	0
<b>TOTAL</b>	<b>123</b>	<b>87</b>	<b>19</b>	<b>8</b>	<b>53</b>	<b>10</b>

## 2. ENROLLMENT AND GRADUATION DATA

Table 2a. Associate Degree Enrollment as of October 15, 2006

SCHOOLS	TE <sup>a</sup>	Status		Year		LPN Students
		FT <sup>b</sup>	PT <sup>c</sup>	1 <sup>st</sup>	2 <sup>nd</sup>	
<b>Associate Degree</b>						
Aquinas College	223	47	176	124	99	2
Chattanooga State Technical CC	256	256	0	107	149	17
Cleveland State Community College	137	137	0	71	66	6
Columbia State Community College	268	29	239	146	122	30
Dyersburg State Community College	110	33	77	66	44	24
Freed-Hardeman University	22	21	1	22	0	0
Jackson State Community College	333	298	35	204	129	58
Lincoln Memorial University	394	254	140	190	204	23
Motlow State Community College	137	29	108	75	62	14
Roane State Community College	267	153	114	138	129	25
Southern Adventist University	206	187	19	104	102	2
Southwest TN Community College	222	195	27	130	92	20
Tennessee State University	216	122	94	122	94	16
Walters State Community College	298	72	226	153	145	33
<b>TOTAL</b>	<b>3089</b>	<b>1833</b>	<b>1256</b>	<b>1652</b>	<b>1437</b>	<b>270</b>
<b>PERCENTAGE</b>		<b>59.3%</b>	<b>40.7%</b>	<b>53.5%</b>	<b>46.5%</b>	<b>8.7%</b>

<sup>a</sup>TE=Total Enrollment

<sup>b</sup>FT=Full-time

<sup>c</sup>PT=Part-time

**Table 2b. Associate Degree Enrollment Demographics as of October 15, 2006**

SCHOOLS	TE <sup>a</sup>	Gender		Race						
		F <sup>b</sup>	M <sup>c</sup>	AI/AN <sup>d</sup>	Asian	Black	Hispanic	White	Other	NonUS <sup>e</sup>
<b>Associate Degree</b>										
Aquinas College	223	199	24	0	8	13	1	201	0	0
Chattanooga State Technical CC	256	212	44	0	7	9	1	239	0	0
Cleveland State Community College	137	127	10	1	3	7	1	125	0	0
Columbia State Community College <sup>f</sup>	268	227	20	1	2	11	0	230	24	0
Dyersburg State Community College	110	103	7	0	1	7	2	100	0	0
Freed-Hardeman University	22	19	3	0	0	0	1	21	0	0
Jackson State Community College	333	284	49	0	0	25	1	304	2	1
Lincoln Memorial University	394	362	32	0	2	11	1	380	0	0
Motlow State Community College	137	128	9	0	1	4	0	132	0	0
Roane State Community College	267	229	38	1	6	6	3	246	5	0
Southern Adventist University	206	158	48	0	9	11	13	149	0	24
Southwest TN Community College	222	194	28	0	4	70	5	136	2	5
Tennessee State University	216	205	11	0	2	37	2	171	4	0
Walters State Community College	298	262	36	1	1	3	4	289	0	0
<b>TOTAL</b>	<b>3089</b>	<b>2709</b>	<b>359</b>	<b>4</b>	<b>46</b>	<b>214</b>	<b>35</b>	<b>2723</b>	<b>37</b>	<b>30</b>
<b>PERCENTAGE</b>		<b>87.7%</b>	<b>11.6%</b>	<b>0.1%</b>	<b>1.5%</b>	<b>6.9%</b>	<b>1.1%</b>	<b>88.2%</b>	<b>1.2%</b>	<b>1.0%</b>

<sup>a</sup>TE=Total Enrollment

<sup>b</sup>F=Female

<sup>c</sup>M=Male

<sup>d</sup>AI/AN=American Indian/Alaskan Native

<sup>e</sup>NonUS=Non US Resident

<sup>f</sup>As reported by respondent

**Table 2c. Diploma Program/Associate Degree Graduate Demographics for October 16, 2005-October 15, 2006**

SCHOOLS	Total Graduates	Gender		Race							LPN Graduates
		F	M	AI/AN	Asian	Black	Hispanic	White	Other	NonUS	
<b>Diploma</b>											
Methodist Healthcare <sup>a</sup>	14	11	3	0	0	3	0	11	0	0	
<b>TOTAL</b>	<b>14</b>	<b>11</b>	<b>3</b>	<b>0</b>	<b>0</b>	<b>3</b>	<b>0</b>	<b>11</b>	<b>0</b>	<b>0</b>	
<b>Associate Degree</b>											
Aquinas College	93	88	5	0	2	3	2	86	0	0	0
Chattanooga State Technical CC	86	74	12	0	3	7	1	75	0	0	14
Cleveland State Community College	47	42	5	0	0	2	0	45	0	0	3
Columbia State Community College	137	113	24	2	2	5	1	127	0	0	26
Dyersburg State Community College	62	56	6	0	0	6	0	56	0	0	17
Freed-Hardeman University <sup>b</sup>											
Jackson State Community College	121	100	21	0	0	5	0	116	0	0	3
Lincoln Memorial University	150	138	12	0	0	9	0	141	0	0	15
Motlow State Community College	51	48	3	0	0	4	1	46	0	0	5
Roane State Community College	78	65	13	1	1	2	0	71	0	3	8
Southern Adventist University	86	66	20	0	5	5	6	66	0	4	1
Southwest TN Community College	86	76	10	0	1	30	6	48	0	1	18
Tennessee State University	65	59	6	0	0	14	1	48	2	0	27
Walters State Community College	131	122	9	0	0	3	2	126	0	0	25
<b>TOTAL</b>	<b>1193</b>	<b>1047</b>	<b>146</b>	<b>3</b>	<b>14</b>	<b>95</b>	<b>20</b>	<b>1051</b>	<b>2</b>	<b>8</b>	<b>162</b>
<b>PERCENTAGE</b>		<b>87.8%</b>	<b>12.2%</b>	<b>0.3%</b>	<b>1.2%</b>	<b>8.0%</b>	<b>1.7%</b>	<b>88.1%</b>	<b>0.2%</b>	<b>0.7%</b>	<b>13.6%</b>

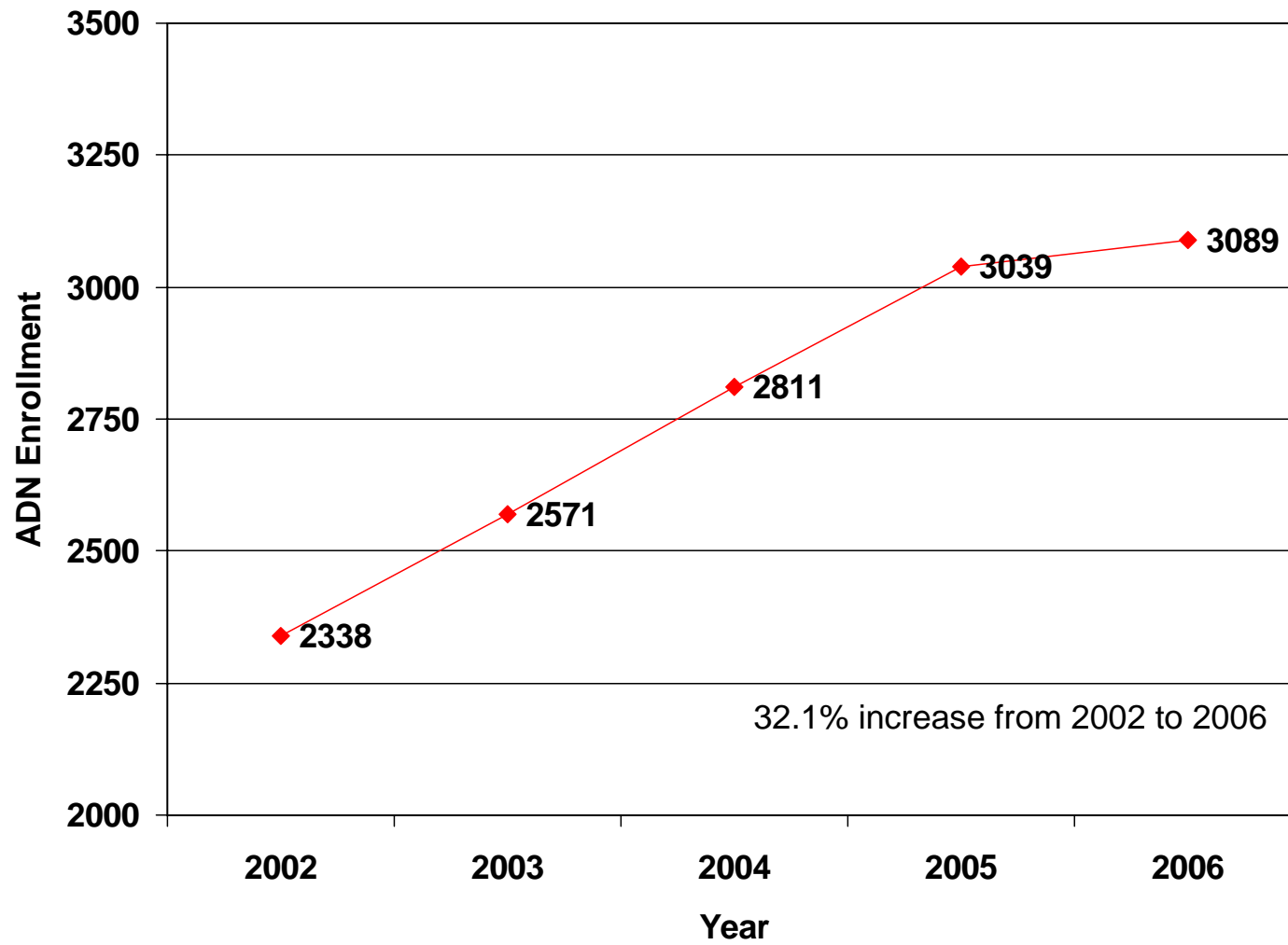
<sup>a</sup>School has now closed

<sup>b</sup>New program

**Table 2d. Diploma Program/Associate Degree Enrollment Trends**  
**(Enrollment as of October 15<sup>th</sup> of each year)**

SCHOOLS	Enrollment Trends				
	2002	2003	2004	2005	2006
<b>Diploma</b>					
Methodist Healthcare	192	216	96	16	0
<b>Total</b>	<b>192</b>	<b>216</b>	<b>96</b>	<b>16</b>	<b>0</b>
<b>Associate Degree</b>					
Aquinas College	134	128	167	218	223
Chattanooga State Technical CC	232	257	259	248	256
Cleveland State Community College	120	114	138	158	137
Columbia State Community College	264	278	284	312	268
Dyersburg State Community College	61	98	112	118	110
Freed-Hardeman University					22
Jackson State Community College	161	203	289	289	333
Lincoln Memorial University	228	312	368	414	394
Motlow State Community College	100	105	113	129	137
Roane State Community College	245	224	233	231	267
Southern Adventist University	156	178	189	197	206
Southwest TN Community College	190	217	219	235	222
Tennessee State University	185	186	181	210	216
Walters State Community College	262	271	259	280	298
<b>TOTAL</b>	<b>2338</b>	<b>2571</b>	<b>2811</b>	<b>3039</b>	<b>3089</b>
<b>PERCENT CHANGE</b>		<b>9.9%</b>	<b>9.3%</b>	<b>8.1%</b>	<b>1.6%</b>
<b>Percent of Licensed LPNs</b>				<b>8.0%</b>	<b>8.7%</b>

Figure 2d. Associate Degree Enrollment Trend Line  
(Enrollment as of October 15<sup>th</sup> of each year)

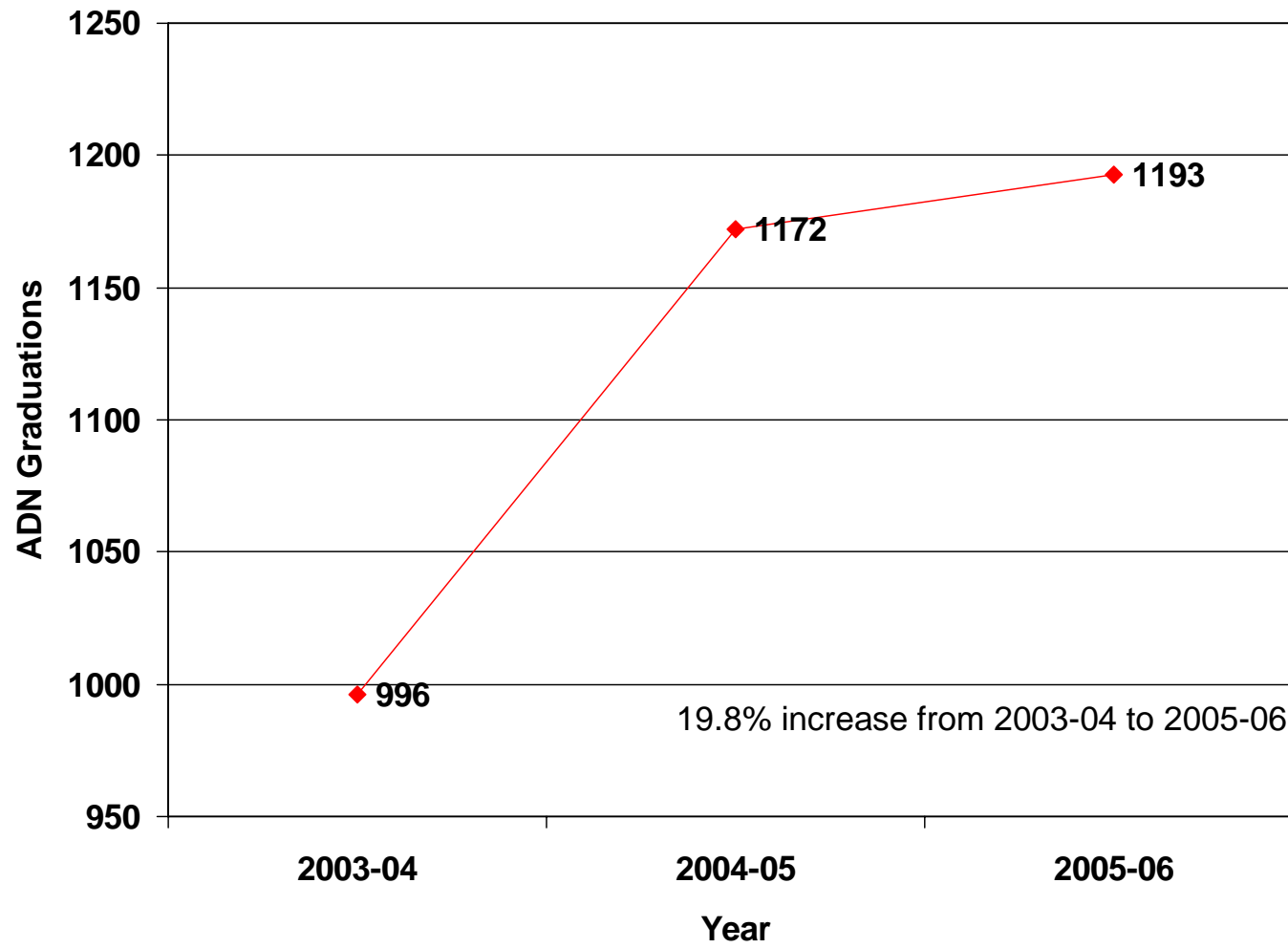


**Table 2e. Diploma Program/Associate Degree Graduation Trends**

SCHOOLS	Graduation Trends		
	2003-2004	2004-2005	2005-2006
<b>Diploma</b>			
Methodist Healthcare	57	73	14
<b>Total</b>	<b>57</b>	<b>73</b>	<b>14</b>
<b>Associate Degree</b>			
Aquinas College	66	52	93
Chattanooga State Technical CC	127	91	86
Cleveland State Community College	44	48	47
Columbia State Community College	97	135	137
Dyersburg State Community College	23	58	62
Freed-Hardeman University <sup>a</sup>			
Jackson State Community College	63	84	121
Lincoln Memorial University	102	147	150
Motlow State Community College	31	38	51
Roane State Community College	81	109	78
Southern Adventist University	88	79	86
Southwest TN Community College	88	91	86
Tennessee State University	66	122	65
Walters State Community College	120	118	131
<b>TOTAL</b>	<b>996</b>	<b>1172</b>	<b>1193</b>
<b>PERCENT CHANGE</b>		<b>17.7%</b>	<b>1.8%</b>
<b>Percent of Licensed LPNs</b>		<b>13.5%</b>	<b>13.6%</b>

<sup>a</sup>New Program

Figure 2e. Associate Degree Graduation Trend Line



**Table 2f. Baccalaureate Degree Enrollment as of October 15, 2006**

SCHOOLS	TE	Type of BSN				Status	
		Basic	Accelerated <sup>a</sup>	LPN-BSN	RN-BSN	FT	PT
<b>Baccalaureate Degree (Initial RN Licensure)</b>							
Austin Peay State University	205	205	0	0		205	0
Baptist Memorial College of Health Sciences	591	570	0	21		386	205
Belmont University	269	238	31	0		260	9
Bethel College	61	61	0	0		60	1
Carson-Newman College	135	135	0	0		135	0
Cumberland University	153	135	16	2		150	3
East Tennessee State University	413	335	54	24		363	50
Fisk University	6	6	0	0		6	0
King College	123	123	0	0		123	0
Lipscomb University	66	66	0	0		66	0
Martin Methodist	10	10	0	0		10	0
Middle Tennessee State University	238	238	0	0		238	0
Milligan College	55	54	0	1		55	0
South College <sup>b</sup>	46	46	0	0		.	.
Tennessee State University	102	102	0	0		102	0
Tennessee Technological University	96	96	0	0		96	0
Tennessee Wesleyan College	90	90	0	0		90	0
Trevecca Nazarene University	4	4	0	0		0	4
Union University	126	62	64	0		126	0
University of Memphis	410	398	12	0		371	39
UT Chattanooga	132	132	0	0		132	0
UT Health Science Center	101	101	0	0		95	6
UT Knoxville	229	229	0	0		220	9
UT Martin	125	125	0	0		125	0
<b>Subtotal</b>	<b>3786</b>	<b>3561</b>	<b>177</b>	<b>48</b>		<b>3414</b>	<b>326</b>
<b>(continued)</b>							

<b>(continued)</b>							
<b>SCHOOLS</b>	<b>TE</b>	<b>Type of BSN</b>				<b>Status</b>	
		<b>Basic</b>	<b>Accelerated<sup>a</sup></b>	<b>LPN-BSN</b>	<b>RN-BSN</b>	<b>FT</b>	<b>PT</b>
<b>Baccalaureate Degree (RN-BSN)</b>							
Aquinas College <sup>c</sup>	13				13	0	13
Austin Peay State University	15				15	15	0
Baptist Memorial College of Health Sciences	14				14	3	11
Belmont University	6				6	0	6
Carson-Newman College	3				3	3	0
East Tennessee State University	77				77	24	53
King College	163				163	163	0
Lincoln Memorial University <sup>c</sup>	28				28	26	2
Middle Tennessee State University	157				157	59	98
Southern Adventist University <sup>c</sup>	66				66	42	24
Tennessee State University	7				7	0	7
Tennessee Technological University	7				7	5	2
Tennessee Wesleyan College	9				9	0	9
Union University	159				159	0	159
University of Memphis	31				31	4	27
University of Phoenix <sup>c</sup>	11				11	11	0
UT Chattanooga	25				25	0	25
UT Health Science Center	4				4	4	0
UT Knoxville	13				13	2	11
UT Martin	40				40	34	6
<b>Subtotal</b>	<b>848</b>				<b>848</b>	<b>395</b>	<b>453</b>
<b>TOTAL</b>	<b>4634</b>	<b>3561</b>	<b>177</b>	<b>48</b>	<b>848</b>	<b>3809</b>	<b>779</b>
<b>PERCENTAGE</b>		<b>76.8%</b>	<b>3.8%</b>	<b>1.0%</b>	<b>18.3%</b>	<b>82.2%</b>	<b>16.8%</b>

<sup>a</sup>Accelerated 2<sup>nd</sup> Degree BSN

<sup>b</sup>As reported by respondent

<sup>c</sup>Offers Baccalaureate Degree program for RNs only

**Table 2g. Baccalaureate Degree Enrollment Demographics as of October 15, 2006**

SCHOOLS	TE	Gender		Race						
		F	M	AI/AN	Asian	Black	Hispanic	White	Other	NonUS
<b>Baccalaureate Degree (Initial RN Licensure)</b>										
Austin Peay State University	205	179	26	5	8	19	13	153	7	0
Baptist Memorial College of Health Sciences	591	538	53	1	11	200	6	354	19	0
Belmont University	269	243	26	2	3	12	0	239	10	3
Bethel College	61	56	5	0	0	10	1	50	0	0
Carson-Newman College	135	120	15	0	0	8	4	121	2	0
Cumberland University	153	134	19	0	1	5	1	144	0	2
East Tennessee State University	413	346	67	2	5	13	7	381	5	0
Fisk University	6	6	0	0	0	6	0	0	0	0
King College	123	110	13	0	1	2	0	115	2	3
Lipscomb University <sup>a</sup>	66	60	6	.	.	.	.	.	.	.
Martin Methodist	10	10	0	1	0	0	0	8	0	1
Middle Tennessee State University	238	221	17	0	3	7	3	225	0	0
Milligan College	55	49	6	0	0	1	0	53	0	1
South College	46	44	2	0	0	2	0	44	0	0
Tennessee State University <sup>a</sup>	102	.	.	2	3	59	1	33	3	1
Tennessee Technological University	96	90	6	1	0	3	0	88	4	0
Tennessee Wesleyan College	90	79	11	0	0	1	0	89	0	0
Trevecca Nazarene University	4	4	0	0	0	0	0	3	0	1
Union University	126	100	26	0	4	10	0	109	2	1
University of Memphis	410	373	37	2	8	116	5	276	3	0
UT Chattanooga	132	114	18	0	2	12	1	117	0	0
UT Health Science Center	101	87	14	0	1	27	1	72	0	0
UT Knoxville	229	200	29	1	4	10	5	204	0	5
UT Martin	125	115	10	0	0	6	2	115	0	2
<b>Subtotal</b>	<b>3786</b>	<b>3278</b>	<b>406</b>	<b>17</b>	<b>54</b>	<b>529</b>	<b>50</b>	<b>2993</b>	<b>57</b>	<b>20</b>
<b>(continued)</b>										

<b>(continued)</b>										
<b>SCHOOLS</b>	<b>TE</b>	<b>Gender</b>		<b>Race</b>						
		<b>F</b>	<b>M</b>	<b>AI/AN</b>	<b>Asian</b>	<b>Black</b>	<b>Hispanic</b>	<b>White</b>	<b>Other</b>	<b>NonUS</b>
<b>Baccalaureate Degree (RN-BSN)</b>										
Aquinas College <sup>b</sup>	13	11	2	0	1	2	0	10	0	0
Austin Peay State University	15	15	0	0	0	3	0	12	0	0
Baptist Memorial College of Health Sciences	14	14	0	0	0	3	0	11	0	0
Belmont University	6	5	1	0	0	0	0	6	0	0
Carson-Newman College	3	3	0	0	0	0	1	2	0	0
East Tennessee State University	77	70	7	0	0	3	1	70	3	0
King College	163	144	19	0	0	0	0	163	0	0
Lincoln Memorial University <sup>b</sup>	28	26	2	0	0	0	1	26	0	1
Middle Tennessee State University	157	135	22	0	1	13	0	136	7	0
Southern Adventist University <sup>b</sup>	66	52	14	1	2	3	4	54	0	2
Tennessee State University <sup>a</sup>	7	.	.	0	0	4	0	3	0	0
Tennessee Technological University	7	7	0	0	0	0	0	7	0	0
Tennessee Wesleyan College	9	6	3	0	0	0	0	9	0	0
Union University	159	158	1	0	0	61	0	93	0	5
University of Memphis	31	27	4	0	0	6	0	21	4	0
University of Phoenix <sup>b</sup>	11	10	1	0	0	1	0	8	2	0
UT Chattanooga	25	19	6	0	0	1	1	21	1	1
UT Health Science Center	4	3	1	0	0	1	0	3	0	0
UT Knoxville	13	13	0	0	1	2	0	10	0	0
UT Martin	40	36	4	0	0	4	0	36	0	0
<b>Subtotal</b>	<b>848</b>	<b>754</b>	<b>87</b>	<b>1</b>	<b>5</b>	<b>107</b>	<b>8</b>	<b>701</b>	<b>17</b>	<b>9</b>
<b>TOTAL</b>	<b>4634</b>	<b>4032</b>	<b>493</b>	<b>18</b>	<b>59</b>	<b>636</b>	<b>58</b>	<b>3694</b>	<b>74</b>	<b>29</b>
<b>PERCENTAGE</b>		<b>87.0%</b>	<b>10.6%</b>	<b>0.4%</b>	<b>1.3%</b>	<b>13.7%</b>	<b>1.3%</b>	<b>79.7%</b>	<b>1.6%</b>	<b>0.6%</b>

<sup>a</sup>As reported by respondent

<sup>b</sup>Offers Baccalaureate Degree program for RNs only

**Table 2h. Baccalaureate Degree Graduate Demographics from October 16, 2005-October 15, 2006**

SCHOOLS	Total Graduates	Gender		Race						
		F	M	AI/AN	Asian	Black	Hispanic	White	Other	NonUS
<b>Baccalaureate Degree (Initial RN Licensure)</b>										
Austin Peay State University	85	75	10	0	0	15	0	70	0	0
Baptist Memorial College of Health Sciences	145	134	11	0	2	49	0	90	4	0
Belmont University	79	70	9	0	1	2	2	71	2	1
Bethel College <sup>a</sup>										
Carson-Newman College	32	25	7	0	0	0	0	32	0	0
Cumberland University	70	60	10	0	2	2	2	64	0	0
East Tennessee State University	142	125	17	2	1	0	1	136	2	0
Fisk University <sup>a</sup>										
King College	24	20	4	0	0	0	0	24	0	0
Lipscomb University <sup>a</sup>										
Martin Methodist <sup>a</sup>										
Middle Tennessee State University	86	78	8	1	2	9	2	72	0	0
Milligan College	9	8	1	0	0	0	0	9	0	0
South College	18	16	2	0	0	3	0	15	0	0
Tennessee State University	29	28	1	0	2	22	0	5	0	0
Tennessee Technological University	51	44	7	0	0	0	0	51	0	0
Tennessee Wesleyan College	39	35	4	0	0	0	0	39	0	0
Trevecca Nazarene University <sup>a</sup>										
Union University	78	69	9	0	2	5	0	68	0	3
University of Memphis	122	112	10	0	2	25	1	94	0	0
UT Chattanooga	54	48	6	0	0	4	0	50	0	0
UT Health Science Center <sup>a</sup>										
UT Knoxville	105	96	9	1	2	7	1	91	0	3
UT Martin	39	36	3	0	1	1	0	37	0	0
<b>Subtotal</b>	<b>1207</b>	<b>1079</b>	<b>128</b>	<b>4</b>	<b>17</b>	<b>144</b>	<b>9</b>	<b>1018</b>	<b>8</b>	<b>7</b>
<b>(continued)</b>										

<b>(continued)</b>										
<b>SCHOOLS</b>	<b>Total Graduates</b>	<b>Gender</b>		<b>Race</b>						
		<b>F</b>	<b>M</b>	<b>AI/AN</b>	<b>Asian</b>	<b>Black</b>	<b>Hispanic</b>	<b>White</b>	<b>Other</b>	<b>NonUS</b>
<b>Baccalaureate Degree (RN-BSN)</b>										
Aquinas College <sup>b</sup>	5	5	0	0	1	0	0	4	0	0
Austin Peay State University	3	3	0	0	0	0	0	3	0	0
Baptist Memorial College of Health Sciences	12	11	1	0	0	6	0	6	0	0
Belmont University	3	3	0	0	0	0	1	2	0	0
Carson-Newman College	1	1	0	0	0	0	0	1	0	0
East Tennessee State University	37	35	2	0	0	1	1	35	0	0
King College	14	11	3	0	0	0	0	14	0	0
Lincoln Memorial University <sup>b</sup>	5	5	0	0	0	1	0	4	0	0
Middle Tennessee State University	66	52	14	0	1	3	2	60	0	0
Southern Adventist University <sup>b</sup>	38	30	8	0	1	2	2	30	0	3
Tennessee State University	6	6	0	0	0	5	0	1	0	0
Tennessee Technological University <sup>a</sup>										
Tennessee Wesleyan College	2	2	0	0	0	0	0	2	0	0
Union University	52	48	4	0	0	25	0	25	0	2
University of Memphis	22	19	3	0	0	4	0	18	0	0
University of Phoenix <sup>a,b</sup>										
UT Chattanooga	3	2	1	0	0	0	0	3	0	0
UT Health Science Center <sup>a</sup>										
UT Knoxville	14	8	6	0	0	1	0	12	0	1
UT Martin	19	18	1	0	0	2	0	17	0	0
<b>Subtotal</b>	<b>302</b>	<b>259</b>	<b>43</b>	<b>0</b>	<b>3</b>	<b>50</b>	<b>6</b>	<b>237</b>	<b>0</b>	<b>6</b>
<b>TOTAL</b>	<b>1509</b>	<b>1338</b>	<b>171</b>	<b>4</b>	<b>20</b>	<b>194</b>	<b>15</b>	<b>1255</b>	<b>8</b>	<b>13</b>
<b>PERCENTAGE</b>		<b>88.7%</b>	<b>11.3%</b>	<b>0.3%</b>	<b>1.3%</b>	<b>12.9%</b>	<b>1.0%</b>	<b>83.2%</b>	<b>0.5%</b>	<b>0.9%</b>

<sup>a</sup>New Program

<sup>b</sup>Offers Baccalaureate Degree program for RNs only

**Table 2i. Baccalaureate Degree Enrollment (as of October 15th of Each Year) and Graduation Trends**

SCHOOLS	Enrollment Trends			Graduation Trends		
	2004	2005	2006	2003-2004	2004-2005	2005-2006
<b>Baccalaureate Degree (Initial RN Licensure)</b>						
Austin Peay State University	164	215	205	57	64	85
Baptist Memorial College of Health Sciences	582	632	591	60	102	145
Belmont University	242	255	269	33	68	79
Bethel College <sup>a</sup>			61			
Carson-Newman College	54	105	135	16	24	32
Cumberland University	203	162	153	23	47	70
East Tennessee State University	343	422	413	87	117	142
Fisk University <sup>a</sup>			6			
King College	82	133	123	10	16	24
Lipscomb University <sup>a</sup>		30	66			
Martin Methodist <sup>a</sup>			10			
Middle Tennessee State University	212	209	238	63	76	86
Milligan College	64	38	55	11	6	9
South College	18	41	46	0	0	18
Tennessee State University	80	104	102	32	29	29
Tennessee Technological University	96	99	96	42	42	51
Tennessee Wesleyan College	81	89	90	34	28	39
Trevecca Nazarene University <sup>a</sup>			4			
Union University	122	110	126	23	82	78
University of Memphis	314	363	410	76	76	122
UT Chattanooga	133	143	132	51	45	54
UT Health Science Center <sup>a</sup>	0	42	101			
UT Knoxville	229	230	229	107	106	105
UT Martin	134	117	125	31	33	39
<b>Subtotal</b>	<b>3153</b>	<b>3539</b>	<b>3786</b>	<b>756</b>	<b>961</b>	<b>1207</b>
<b>Subtotal Percent Change</b>		<b>12.2%</b>	<b>7.0%</b>		<b>27.1%</b>	<b>25.6%</b>
<b>(continued)</b>						

<b>(continued)</b>						
<b>SCHOOLS</b>	<b>Enrollment Trends</b>			<b>Graduation Trends</b>		
	<b>2004</b>	<b>2005</b>	<b>2006</b>	<b>2003-2004</b>	<b>2004-2005</b>	<b>2005-2006</b>
<b>Baccalaureate Degree (RN-BSN)</b>						
Aquinas College	21	19	13	5	6	5
Austin Peay State University	3	12	15			3
Baptist Memorial College of Health Sciences	40	23	14	23	26	12
Belmont University	5	6	6	3	5	3
Carson-Newman College	3	2	3		2	1
Cumberland University	1			1		
East Tennessee State University	90	83	77	29	39	37
King College	42	87	163	23	25	14
Lincoln Memorial University	19	24	28	7	10	5
Middle Tennessee State University	99	121	157	35	40	66
Southern Adventist University	88	65	66	49	49	38
Tennessee State University	8	20	7	7		6
Tennessee Technological University	1		7	1	1	
Tennessee Wesleyan College	3	3	9	5	1	2
Union University	141	162	159	33	50	52
University of Memphis	34	35	31	15	15	22
University of Phoenix <sup>a</sup>		5	11			
UT Chattanooga	11	14	25	7	5	3
UT Health Science Center <sup>a</sup>		29	4			
UT Knoxville	20	21	13	12	9	14
UT Martin	42	15	40	10	20	19
<b>Subtotal</b>	<b>671</b>	<b>746</b>	<b>848</b>	<b>265</b>	<b>303</b>	<b>302</b>
<b>Subtotal Percent Change</b>		<b>11.2%</b>	<b>13.7%</b>		<b>14.3%</b>	<b>(0.3%)</b>
<b>TOTAL</b>	<b>3824</b>	<b>4285</b>	<b>4634</b>	<b>1021</b>	<b>1264</b>	<b>1509</b>
<b>TOTAL PERCENT CHANGE</b>		<b>12.0%</b>	<b>8.1%</b>		<b>23.8%</b>	<b>19.4%</b>

<sup>a</sup>New Program

Figure 2i-1. Baccalaureate Degree Enrollment Trend Line  
(Enrollment as of October 15th of Each Year)

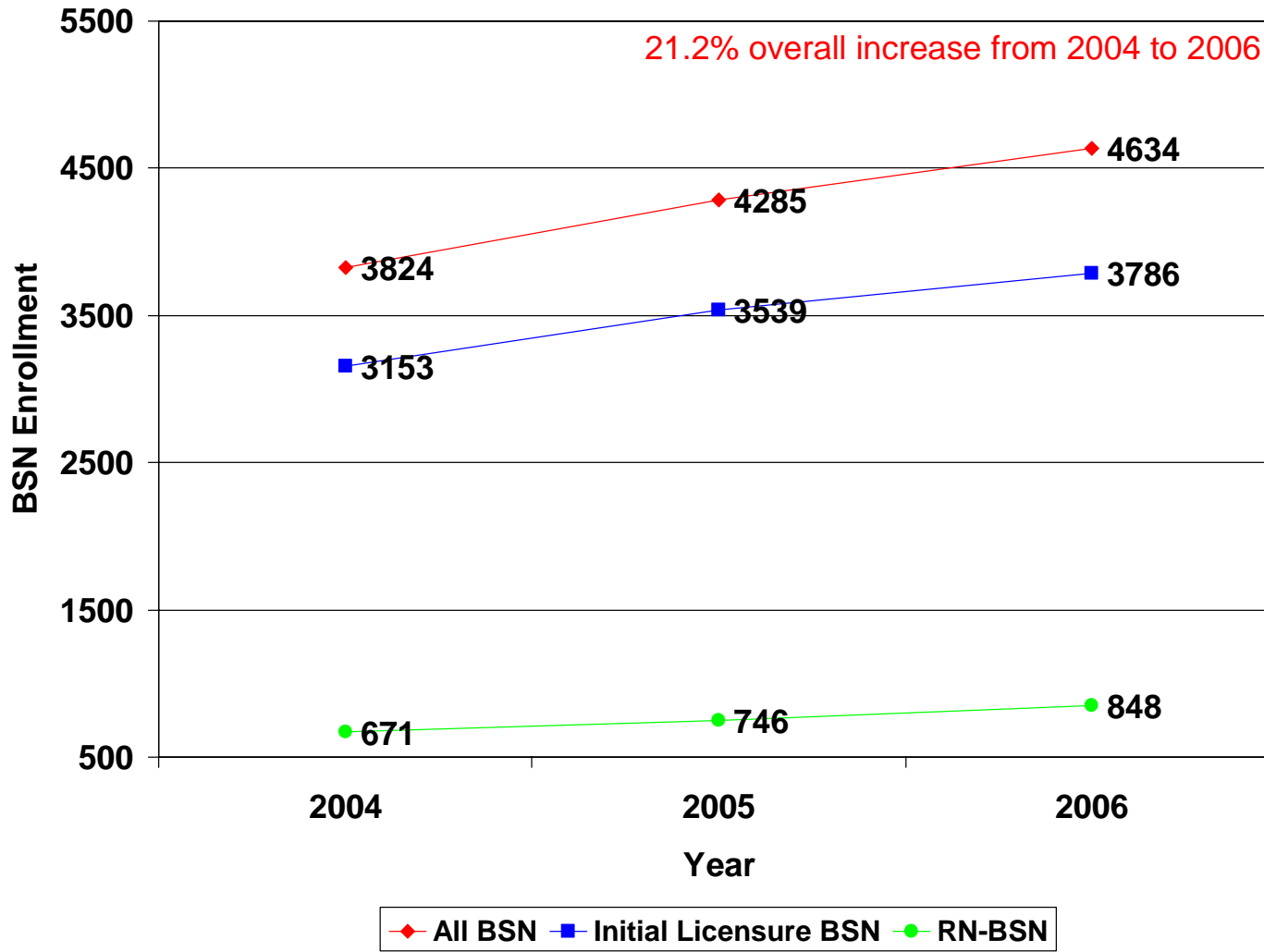
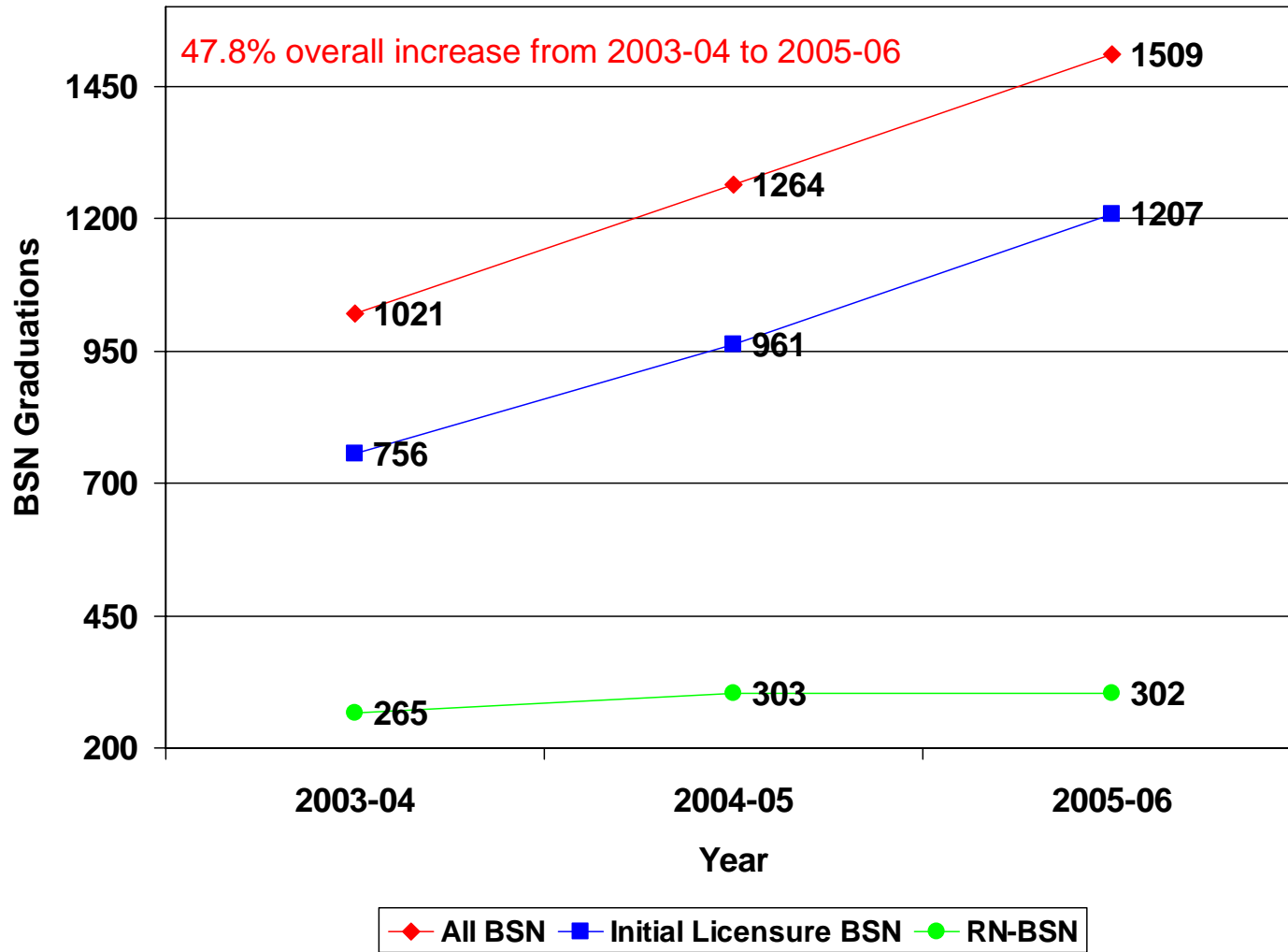


Figure 2i-2. Baccalaureate Degree Graduation Trend Line



**Table 2j. Master of Science Degree Enrollment as of October 15, 2006**

SCHOOLS	TE	Status	
		FT	PT
<b>Master's Degree</b>			
Austin Peay State University <sup>a</sup>	31	0	31
Belmont University	13	10	3
Carson-Newman College	31	26	5
East Tennessee State University	104	67	37
King College	15	15	0
Lincoln Memorial University	10	9	1
Middle Tennessee State University <sup>a</sup>	54	14	40
Southern Adventist University	60	30	30
Tennessee State University	103	20	83
Tennessee Technological University <sup>a</sup>	27	4	23
Union University	55	53	2
University of Memphis	124	31	93
UT Chattanooga	99	67	32
UT Health Science Center	109	108	1
UT Knoxville	95	61	34
Vanderbilt University	255	106	149
<b>Subtotal</b>	<b>1185</b>	<b>621</b>	<b>564</b>
<b>Master's for Initial RN Licensure</b>			
UT Knoxville	44	40	4
Vanderbilt University	299	257	42
<b>Subtotal</b>	<b>343</b>	<b>297</b>	<b>46</b>
<b>Post-Master's Certificate</b>			
Belmont University	1		
Carson-Newman College	0		
East Tennessee State University	2		
Southern Adventist University	1		
Tennessee State University	2		
Union University	2		
UT Chattanooga	5		
UT Health Science Center	2		
UT Knoxville	7		
Vanderbilt University	14		
<b>Subtotal</b>	<b>36</b>		
<b>TOTAL</b>	<b>1564</b>	<b>918</b>	<b>610</b>
<b>PERCENTAGE</b>		<b>60.1%</b>	<b>39.9%</b>

<sup>a</sup>Regents Online Degree Program (RODP) only

**Table 2k. Master of Science Degree Enrollment Demographics as of October 15, 2006**

SCHOOLS	TE	Gender		Race						
		F	M	AI/AN	Asian	Black	Hispanic	White	Other	NonUS
<b>Master's Degree</b>										
Austin Peay State University	31	29	2	1	0	5	0	25	0	0
Belmont University	13	13	0	0	0	0	0	12	1	0
Carson-Newman College	31	28	3	0	0	1	0	30	0	0
East Tennessee State University	104	93	11	2	2	1	0	98	1	0
King College	15	15	0	0	0	0	0	15	0	0
Lincoln Memorial University	10	10	0	0	0	1	0	9	0	0
Middle Tennessee State University	54	48	6	0	0	11	0	42	1	0
Southern Adventist University	60	54	6	0	1	3	1	52	0	3
Tennessee State University	103	98	5	0	2	35	2	63	0	1
Tennessee Technological University	27	25	2	0	0	2	0	25	0	0
Union University	55	44	11	0	1	12	1	41	0	0
University of Memphis	124	115	9	1	0	34	2	87	0	0
UT Chattanooga <sup>a</sup>	99	83	16	1	3	1	3	92	0	0
UT Health Science Center	109	79	30	0	0	21	1	87	0	0
UT Knoxville	95	82	13	0	1	0	0	93	0	1
Vanderbilt University	255	233	22	1	0	13	5	233	1	2
<b>Subtotal</b>	<b>1185</b>	<b>1049</b>	<b>136</b>	<b>6</b>	<b>10</b>	<b>140</b>	<b>15</b>	<b>1004</b>	<b>4</b>	<b>7</b>
<b>Master's for Initial RN Licensure</b>										
UT Knoxville	44	35	9	0	2	1	0	37	0	4
Vanderbilt University	299	263	36	1	4	20	6	261	1	6
<b>Subtotal</b>	<b>343</b>	<b>298</b>	<b>45</b>	<b>1</b>	<b>6</b>	<b>21</b>	<b>6</b>	<b>298</b>	<b>1</b>	<b>10</b>
<b>Post-Master's Certificate</b>										
Belmont University	1	1	0	0	0	0	0	1	0	0
Carson-Newman College	0	0	0	0	0	0	0	0	0	0
East Tennessee State University	2	2	0	0	0	0	0	2	0	0
Southern Adventist University	1	1	0	0	1	0	0	0	0	0
Tennessee State University	2	2	0	0	0	0	0	2	0	0
Union University	2	2	0	0	0	1	0	1	0	0
UT Chattanooga	5	4	1	0	0	1	1	3	0	0
UT Health Science Center	2	2	0	0	0	0	0	2	0	0
UT Knoxville	7	6	1	0	0	0	1	6	0	0
Vanderbilt University	14	14	0	0	1	3	0	10	0	0
<b>Subtotal</b>	<b>36</b>	<b>34</b>	<b>2</b>	<b>0</b>	<b>2</b>	<b>5</b>	<b>2</b>	<b>27</b>	<b>0</b>	<b>0</b>
<b>TOTAL</b>	<b>1564</b>	<b>1381</b>	<b>183</b>	<b>7</b>	<b>18</b>	<b>166</b>	<b>23</b>	<b>1329</b>	<b>5</b>	<b>17</b>
<b>PERCENTAGE</b>		<b>88.3%</b>	<b>11.7%</b>	<b>0.4%</b>	<b>1.2%</b>	<b>10.6%</b>	<b>1.5%</b>	<b>85.0%</b>	<b>0.3%</b>	<b>1.1%</b>

<sup>a</sup>As reported by respondent

**Table 2I. Master of Science Degree Graduate Demographics from October 16, 2005-October 15, 2006**

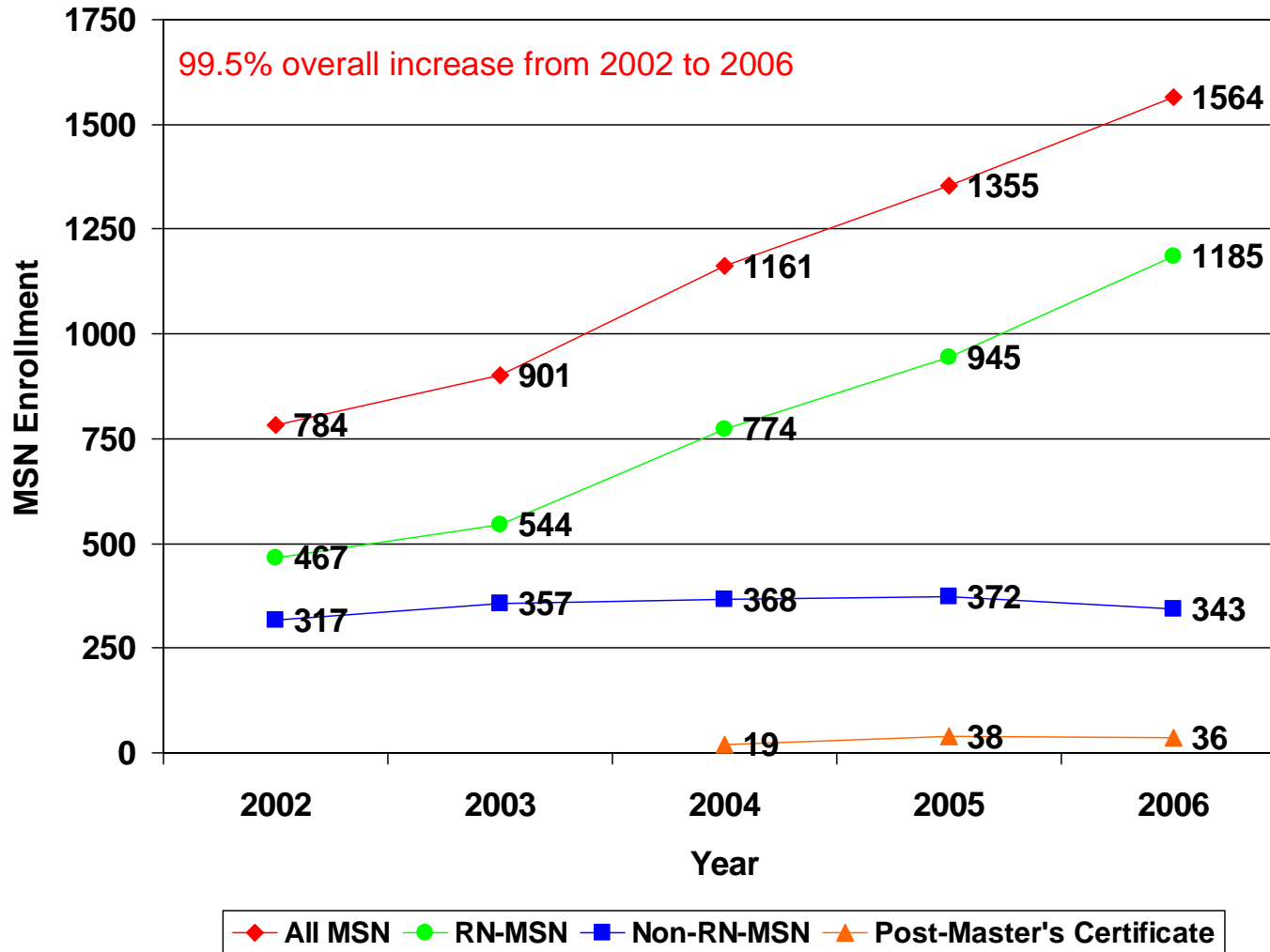
SCHOOLS	Total Graduates	Gender		Race						
		F	M	AI/AN	Asian	Black	Hispanic	White	Other	NonUS
<b>Master's Degree</b>										
Austin Peay State University	1	1	0	0	0	0	0	1	0	0
Belmont University	3	3	0	0	0	0	0	3	0	0
Carson-Newman College	10	9	1	0	1	0	0	9	0	0
East Tennessee State University	31	28	3	0	0	0	0	31	0	0
King College										
Lincoln Memorial University										
Middle Tennessee State University	5	4	1	0	0	0	0	5	0	0
Southern Adventist University	19	15	4	0	0	2	0	17	0	0
Tennessee State University	9	9	0	0	0	4	0	5	0	0
Tennessee Technological University										
Union University	14	12	2	0	0	4	1	9	0	0
University of Memphis	48	46	2	0	0	14	1	33	0	0
UT Chattanooga	27	16	11	0	0	1	0	25	1	0
UT Health Science Center	31	25	6	0	0	4	1	26	0	0
UT Knoxville	45	41	4	0	1	1	0	43	0	0
Vanderbilt University	102	91	11	1	4	1	3	92	0	1
<b>Subtotal</b>	<b>345</b>	<b>300</b>	<b>45</b>	<b>1</b>	<b>6</b>	<b>31</b>	<b>6</b>	<b>299</b>	<b>1</b>	<b>1</b>
<b>Master's for Initial RN Licensure</b>										
UT Knoxville	19	16	3	0	0	0	0	19	0	0
Vanderbilt University	135	122	13	0	0	6	5	121	1	2
<b>Subtotal</b>	<b>154</b>	<b>138</b>	<b>16</b>	<b>0</b>	<b>0</b>	<b>6</b>	<b>5</b>	<b>140</b>	<b>1</b>	<b>2</b>
<b>Post-Master's Certificate</b>										
Belmont University	1	1	0	0	0	0	0	1	0	0
Carson-Newman College	1	1	0	0	0	0	0	1	0	0
East Tennessee State University	1	1	0	0	0	0	0	1	0	0
Southern Adventist University										
Tennessee State University										
Union University										
UT Chattanooga	1	1	0	0	0	0	0	1	0	0
UT Health Science Center	3	3	0	0	0	0	0	3	0	0
UT Knoxville	4	4	0	0	0	1	0	3	0	0
Vanderbilt University	13	12	1	0	1	0	1	11	0	0
<b>Subtotal</b>	<b>24</b>	<b>23</b>	<b>1</b>	<b>0</b>	<b>1</b>	<b>1</b>	<b>1</b>	<b>21</b>	<b>0</b>	<b>0</b>
<b>TOTAL</b>	<b>523</b>	<b>461</b>	<b>62</b>	<b>1</b>	<b>7</b>	<b>38</b>	<b>12</b>	<b>460</b>	<b>2</b>	<b>3</b>
<b>PERCENTAGE</b>		<b>88.1%</b>	<b>11.9%</b>	<b>0.2%</b>	<b>1.3%</b>	<b>7.3%</b>	<b>2.3%</b>	<b>88.0%</b>	<b>0.4%</b>	<b>0.6%</b>

**Table 2m. Master of Science Degree Enrollment Trends  
(Enrollment of October 15th of Each Year)**

SCHOOLS	Enrollment Trends				
	2002	2003	2004	2005	2006
<b>Master's Degree</b>					
Austin Peay State University			6	40	31
Belmont University	8	11	7	12	13
Carson-Newman College	14	15	23	28	31
East Tennessee State University	95	89	91	101	104
King College <sup>a</sup>					15
Lincoln Memorial University <sup>a</sup>					10
Middle Tennessee State University			26	38	54
Southern Adventist University	18	31	61	56	60
Tennessee State University	18	15	30	45	103
Tennessee Technological University			5	19	27
Union University	44	39	31	21	55
University of Memphis			92	116	124
UT Chattanooga	57	54	73	84	99
UT Health Science Center		80	91	102	109
UT Knoxville	72	76	82	93	95
Vanderbilt University	141	134	156	190	255
<b>Subtotal</b>	<b>467</b>	<b>544</b>	<b>774</b>	<b>945</b>	<b>1185</b>
<b>Subtotal Percent Change</b>		<b>16.5%</b>	<b>42.3%</b>	<b>22.1%</b>	<b>25.4%</b>
<b>Master's for Initial RN Licensure</b>					
UT Knoxville	43	45	46	51	44
Vanderbilt University	274	312	322	321	299
<b>Subtotal</b>	<b>317</b>	<b>357</b>	<b>368</b>	<b>372</b>	<b>343</b>
<b>Subtotal Percent Change</b>		<b>12.6%</b>	<b>3.1%</b>	<b>1.1%</b>	<b>(7.8%)</b>
<b>Post-Master's Certificate</b>					
Belmont University			1	1	1
Carson-Newman College			1	2	0
East Tennessee State University			2	3	2
Southern Adventist University					1
Tennessee State University					2
Union University					2
UT Chattanooga			5	5	5
UT Health Science Center			5	6	2
UT Knoxville			5	5	7
Vanderbilt University				16	14
<b>Subtotal</b>			<b>19</b>	<b>38</b>	<b>36</b>
<b>Subtotal Percent Change</b>				<b>100%</b>	<b>(5.3%)</b>
<b>TOTAL</b>	<b>784</b>	<b>901</b>	<b>1161</b>	<b>1355</b>	<b>1564</b>
<b>PERCENT CHANGE</b>		<b>14.9%</b>	<b>28.9%</b>	<b>16.7%</b>	<b>15.4%</b>

<sup>a</sup>New Program

Figure 2m. Master of Science Degree Enrollment Trend Line  
(Enrollment as of October 15th of Each Year)

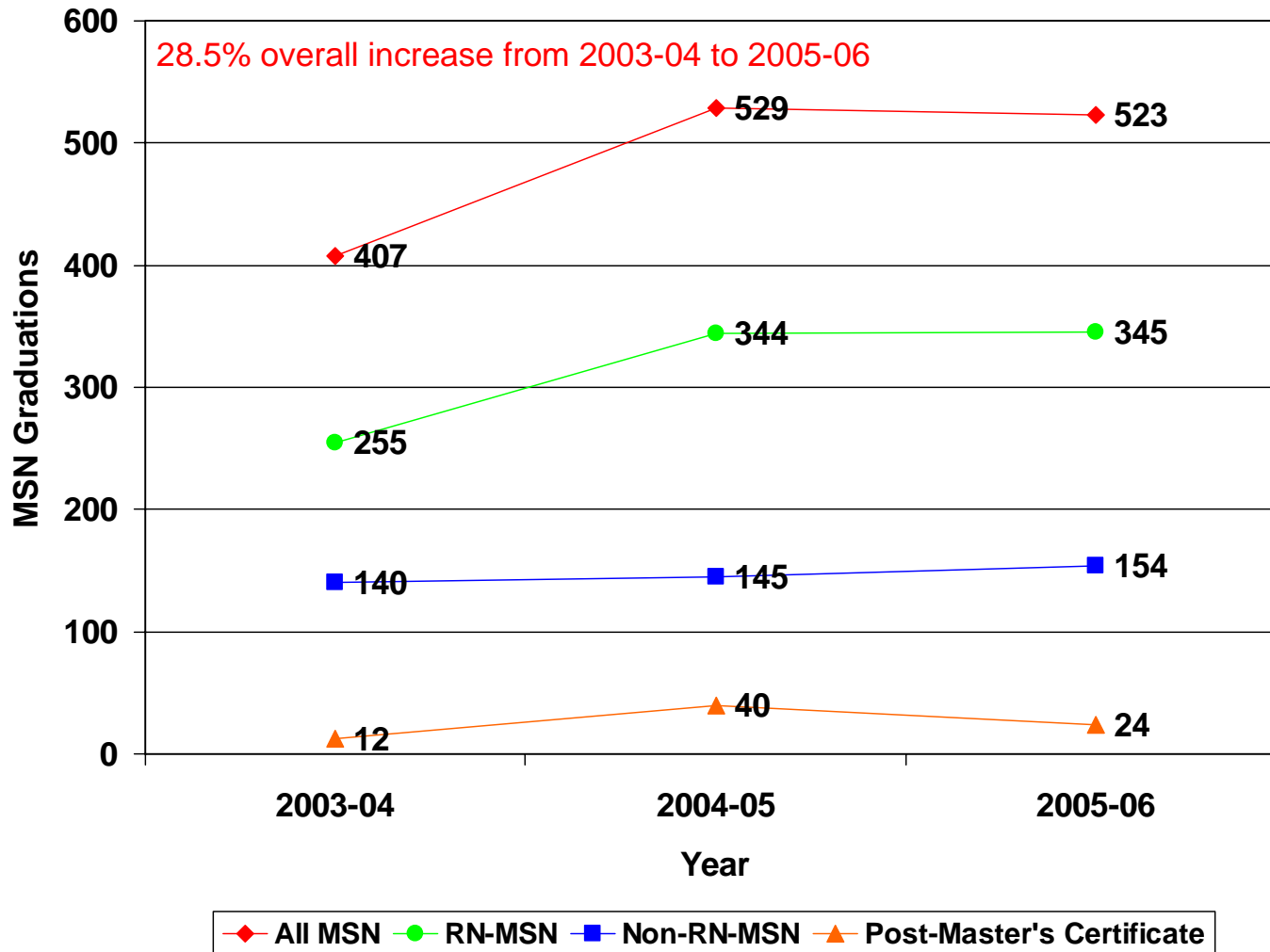


**Table 2n. Master of Science Degree Graduation Trends**

SCHOOLS	Graduation Trends		
	2003-2004	2004-2005	2005-2006
<b>Master's Degree</b>			
Austin Peay State University			1
Belmont University	5	3	3
Carson-Newman College	7	5	10
East Tennessee State University	30	39	31
King College			
Lincoln Memorial University			
Middle Tennessee State University			5
Southern Adventist University	3	17	19
Tennessee State University	6	9	9
Tennessee Technological University			
Union University	20	20	14
University of Memphis		24	48
UT Chattanooga	17	32	27
UT Health Science Center	31	34	31
UT Knoxville	30	38	45
Vanderbilt University	106	123	102
<b>Subtotal</b>	<b>255</b>	<b>344</b>	<b>345</b>
<b>Subtotal Percent Change</b>		<b>34.9%</b>	<b>0.3%</b>
<b>Master's for Initial RN Licensure</b>			
UT Knoxville	15	10	19
Vanderbilt University	125	135	135
<b>Subtotal</b>	<b>140</b>	<b>145</b>	<b>154</b>
<b>Subtotal Percent Change</b>		<b>3.6%</b>	<b>6.2%</b>
<b>Post-Master's Certificate</b>			
Belmont University		1	1
Carson-Newman College	1		1
East Tennessee State University			1
Southern Adventist University			
Tennessee State University			
Union University			
UT Chattanooga	4	17	1
UT Health Science Center		5	3
UT Knoxville	7	3	4
Vanderbilt University		14	13
<b>Subtotal</b>	<b>12</b>	<b>40</b>	<b>24</b>
<b>Subtotal Percent Change</b>		<b>233%</b>	<b>(40.0%)</b>
<b>TOTAL</b>	<b>407</b>	<b>529</b>	<b>523</b>
<b>TOTAL PERCENT CHANGE</b>		<b>30.0%</b>	<b>(1.1%)</b>

<sup>a</sup>New Program

Figure 2n. Master of Science Degree Graduation Trend Line



**Table 2o. Master of Science Degree and Post-Master's Certificate Enrollment and Graduation by Specialty**

Specialty	Enrollment as of October 15, 2006		Graduates from October 16, 2005 – October 15, 2006	
	MSNs <sup>a</sup>	Post-Master's <sup>a</sup>	MSNs <sup>a</sup>	Post-Master's <sup>a</sup>
Nursing Administration	82	2	28	0
Nursing Education	77	1	32	0
Holistic Health	10	0	0	0
Nurse Anesthesia	166	6	50	2
Nursing Informatics	21	0	1	0
Nurse Midwifery	40	1	12	0
Clinical Nurse Specialist:				
Adult	11	1	1	0
Community Health	0	0	0	0
Gerontological	0	0	0	0
Home Health	0	0	0	0
Medical-Surgical	6	1	3	1
Pediatric	6	0	0	0
Psychiatric-Adult	0	0	0	0
Psychiatric-Child/Adol	0	0	0	0
Nurse Practitioner:				
Acute Care	112	1	43	3
Adult	85	6	30	3
Critical Care	13	0	4	2
Family	580	9	165	9
Gerontological	17	0	8	0
Neonatal	27	3	17	0
Pediatric	82	1	47	1
Psychiatric-Adult	43	2	21	5
Psychiatric-Child/Adol	10	0	6	0
Women's Health	50	0	25	0
Dual Degree:				
MSN/MBA	3	0	0	0
Other (please specify):				
Adult/Geri NP	6	0	0	0
Family/Geri NP	2	0	0	0
Homeland Security	1	2	3	0
Mental Health NP/CNS	14	0	5	2
<b>SUBTOTAL</b>	<b>1464</b>	<b>36</b>	<b>501</b>	<b>28</b>
<b>TOTAL</b>	<b>1500</b>		<b>529</b>	

<sup>a</sup>As Reported by Respondent

NOTE: These data are aggregate data of all schools, but do not reflect the reported number of enrolled students or graduates.

**Table 2p. Initial RN Licensure Enrollment Demographics as of October 15, 2006**

SCHOOLS	TE	Status		Gender		Race						
		FT	PT	F	M	AI/AN	Asian	Black	Hispanic	White	Other	NonUS
<b>Associate Degree</b>												
Aquinas College	223	47	176	199	24	0	8	13	1	201	0	0
Chattanooga State Technical CC	256	256	0	212	44	0	7	9	1	239	0	0
Cleveland State Community College	137	137	0	127	10	1	3	7	1	125	0	0
Columbia State Community College <sup>a</sup>	268	29	239	227	20	1	2	11	0	230	24	0
Dyersburg State Community College	110	33	77	103	7	0	1	7	2	100	0	0
Freed-Hardeman University	22	21	1	19	3	0	0	0	1	21	0	0
Jackson State Community College	333	298	35	284	49	0	0	25	1	304	2	1
Lincoln Memorial University	394	254	140	362	32	0	2	11	1	380	0	0
Motlow State Community College	137	29	108	128	9	0	1	4	0	132	0	0
Roane State Community College	267	153	114	229	38	1	6	6	3	246	5	0
Southern Adventist University	206	187	19	158	48	0	9	11	13	149	0	24
Southwest TN Community College	222	195	27	194	28	0	4	70	5	136	2	5
Tennessee State University	216	122	94	205	11	0	2	37	2	171	4	0
Walters State Community College	298	72	226	262	36	1	1	3	4	289	0	0
<b>Subtotal</b>	<b>3089</b>	<b>1833</b>	<b>1256</b>	<b>2709</b>	<b>359</b>	<b>4</b>	<b>46</b>	<b>214</b>	<b>35</b>	<b>2723</b>	<b>37</b>	<b>30</b>
<b>(continued)</b>												

<b>(continued)</b>												
<b>SCHOOLS</b>	<b>TE</b>	<b>Status</b>		<b>Gender</b>		<b>Race</b>						
		<b>FT</b>	<b>PT</b>	<b>F</b>	<b>M</b>	<b>AI/AN</b>	<b>Asian</b>	<b>Black</b>	<b>Hispanic</b>	<b>White</b>	<b>Other</b>	<b>NonUS</b>
<b>Baccalaureate Degree (Initial RN Licensure)</b>												
Austin Peay State University	205	205	0	179	26	5	8	19	13	153	7	0
Baptist Memorial College of Health Sciences	591	386	205	538	53	1	11	200	6	354	19	0
Belmont University	269	260	9	243	26	2	3	12	0	239	10	3
Bethel College	61	60	1	56	5	0	0	10	1	50	0	0
Carson-Newman College	135	135	0	120	15	0	0	8	4	121	2	0
Cumberland University	153	150	3	134	19	0	1	5	1	144	0	2
East Tennessee State University	413	363	50	346	67	2	5	13	7	381	5	0
Fisk University	6	6	0	6	0	0	0	6	0	0	0	0
King College	123	123	0	110	13	0	1	2	0	115	2	3
Lipscomb University <sup>a</sup>	66	66	0	60	6	.	.	.	.	.	.	.
Martin Methodist	10	10	0	10	0	1	0	0	0	8	0	1
Middle Tennessee State University	238	238	0	221	17	0	3	7	3	225	0	0
Milligan College	55	55	0	49	6	0	0	1	0	53	0	1
South College <sup>a</sup>	46	.	.	44	2	0	0	2	0	44	0	0
Tennessee State University <sup>a</sup>	102	102	0	.	.	2	3	59	1	33	3	1
Tennessee Technological University	96	96	0	90	6	1	0	3	0	88	4	0
Tennessee Wesleyan College	90	90	0	79	11	0	0	1	0	89	0	0
Trevecca Nazarene University	4	0	4	4	0	0	0	0	0	3	0	1
Union University	126	126	0	100	26	0	4	10	0	109	2	1
University of Memphis	410	371	39	373	37	2	8	116	5	276	3	0
UT Chattanooga	132	132	0	114	18	0	2	12	1	117	0	0
UT Health Science Center	101	95	6	87	14	0	1	27	1	72	0	0
UT Knoxville	229	220	9	200	29	1	4	10	5	204	0	5
UT Martin	125	125	0	115	10	0	0	6	2	115	0	2
<b>Subtotal</b>	<b>3786</b>	<b>3414</b>	<b>326</b>	<b>3278</b>	<b>406</b>	<b>17</b>	<b>54</b>	<b>529</b>	<b>50</b>	<b>2993</b>	<b>57</b>	<b>20</b>
<b>Master's for Initial RN Licensure</b>												
UT Knoxville	44	40	4	35	9	0	2	1	0	37	0	4
Vanderbilt University	299	257	42	263	36	1	4	20	6	261	1	6
<b>Subtotal</b>	<b>343</b>	<b>297</b>	<b>46</b>	<b>298</b>	<b>45</b>	<b>1</b>	<b>6</b>	<b>21</b>	<b>6</b>	<b>298</b>	<b>1</b>	<b>10</b>
<b>TOTAL</b>	<b>7218</b>	<b>5544</b>	<b>1628</b>	<b>6285</b>	<b>810</b>	<b>22</b>	<b>106</b>	<b>764</b>	<b>91</b>	<b>6014</b>	<b>95</b>	<b>60</b>
<b>PERCENTAGE</b>		<b>76.8%</b>	<b>22.6%</b>	<b>87.1%</b>	<b>11.2%</b>	<b>0.3%</b>	<b>1.5%</b>	<b>10.6%</b>	<b>1.3%</b>	<b>83.3%</b>	<b>1.3%</b>	<b>0.8%</b>

<sup>a</sup>As reported by respondent

**Table 2q. Initial RN Licensure Graduate Demographics from October 16, 2005-October 15, 2006**

SCHOOLS	Total Graduates	Gender		Race						
		F	M	AI/AN	Asian	Black	Hispanic	White	Other	NonUS
<b>Diploma</b>										
Methodist Healthcare	14	11	3	0	0	3	0	11	0	0
<b>Subtotal</b>	<b>14</b>	<b>11</b>	<b>3</b>	<b>0</b>	<b>0</b>	<b>3</b>	<b>0</b>	<b>11</b>	<b>0</b>	<b>0</b>
<b>Associate Degree</b>										
Aquinas College	93	88	5	0	2	3	2	86	0	0
Chattanooga State Technical CC	86	74	12	0	3	7	1	75	0	0
Cleveland State Community College	47	42	5	0	0	2	0	45	0	0
Columbia State Community College	137	113	24	2	2	5	1	127	0	0
Dyersburg State Community College	62	56	6	0	0	6	0	56	0	0
Freed-Hardeman University										
Jackson State Community College	121	100	21	0	0	5	0	116	0	0
Lincoln Memorial University	150	138	12	0	0	9	0	141	0	0
Motlow State Community College	51	48	3	0	0	4	1	46	0	0
Roane State Community College	78	65	13	1	1	2	0	71	0	3
Southern Adventist University	86	66	20	0	5	5	6	66	0	4
Southwest TN Community College	86	76	10	0	1	30	6	48	0	1
Tennessee State University	65	59	6	0	0	14	1	48	2	0
Walters State Community College	131	122	9	0	0	3	2	126	0	0
<b>Subtotal</b>	<b>1193</b>	<b>1047</b>	<b>146</b>	<b>3</b>	<b>14</b>	<b>95</b>	<b>20</b>	<b>1051</b>	<b>2</b>	<b>8</b>
<b>(continued)</b>										

<b>(continued)</b>										
<b>SCHOOLS</b>	<b>Total Graduates</b>	<b>Gender</b>		<b>Race</b>						
		<b>M</b>	<b>F</b>	<b>AI/AN</b>	<b>Asian</b>	<b>Black</b>	<b>Hispanic</b>	<b>White</b>	<b>Other</b>	<b>NonUS</b>
<b>Baccalaureate Degree (Initial RN Licensure)</b>										
Austin Peay State University	85	75	10	0	0	15	0	70	0	0
Baptist Memorial College of Health Sciences	145	134	11	0	2	49	0	90	4	0
Belmont University	79	70	9	0	1	2	2	71	2	1
Bethel College										
Carson-Newman College	32	25	7	0	0	0	0	32	0	0
Cumberland University	70	60	10	0	2	2	2	64	0	0
East Tennessee State University	142	125	17	2	1	0	1	136	2	0
Fisk University										
King College	24	20	4	0	0	0	0	24	0	0
Lipscomb University										
Martin Methodist										
Middle Tennessee State University	86	78	8	1	2	9	2	72	0	0
Milligan College	9	8	1	0	0	0	0	9	0	0
South College	18	16	2	0	0	3	0	15	0	0
Tennessee State University	29	28	1	0	2	22	0	5	0	0
Tennessee Technological University	51	44	7	0	0	0	0	51	0	0
Tennessee Wesleyan College	39	35	4	0	0	0	0	39	0	0
Trevecca Nazarene University										
Union University	78	69	9	0	2	5	0	68	0	3
University of Memphis	122	112	10	0	2	25	1	94	0	0
UT Chattanooga	54	48	6	0	0	4	0	50	0	0
UT Health Science Center										
UT Knoxville	105	96	9	1	2	7	1	91	0	3
UT Martin	39	36	3	0	1	1	0	37	0	0
<b>Subtotal</b>	<b>1207</b>	<b>1079</b>	<b>128</b>	<b>4</b>	<b>17</b>	<b>144</b>	<b>9</b>	<b>1018</b>	<b>8</b>	<b>7</b>
<b>Master's for Initial RN Licensure</b>										
UT Knoxville	19	16	3	0	0	0	0	19	0	0
Vanderbilt University	135	122	13	0	0	6	5	121	1	2
<b>Subtotal</b>	<b>154</b>	<b>138</b>	<b>16</b>	<b>0</b>	<b>0</b>	<b>6</b>	<b>5</b>	<b>140</b>	<b>1</b>	<b>2</b>
<b>TOTAL</b>	<b>2554</b>	<b>2264</b>	<b>290</b>	<b>7</b>	<b>31</b>	<b>245</b>	<b>34</b>	<b>2209</b>	<b>11</b>	<b>17</b>
<b>PERCENTAGE</b>		<b>88.6%</b>	<b>11.4%</b>	<b>0.3%</b>	<b>1.2%</b>	<b>9.6%</b>	<b>1.3%</b>	<b>86.5%</b>	<b>0.4%</b>	<b>0.7%</b>

<sup>a</sup>As reported by respondent

**Table 2r. Doctoral Degree Program Available Degrees and Specialty Focus as of October 15, 2006**

SCHOOLS	Type of Degree			Specialty Focus				
	PhD	DSN/DNSc	DNP	Administration	Clinical Practice	Education	Research	Other (please specify)
<b>Doctoral Degree</b>								
East Tennessee State University		✓					✓	Students can choose courses that meet their program goals.
UT Health Science Center	✓		✓	✓	✓		✓	
UT Knoxville	✓						✓	
Vanderbilt University	✓						✓	Health Services and Clinical Research

**Table 2s. Doctoral Degree Enrollment Demographics as of October 15, 2006**

SCHOOLS	TE	Status		Gender		Race						
		FT	PT	F	M	AI/AN	Asian	Black	Hispanic	White	Other	NonUS
East Tennessee State University	21	3	18	19	2	1	0	2	0	17	1	0
UT Health Science Center	125	118	7	113	12	0	1	20	4	98	2	0
UT Knoxville	29	11	18	26	3	0	0	0	0	29	0	0
Vanderbilt University	26	24	2	24	2	0	0	3	0	21	0	2
<b>TOTAL</b>	<b>201</b>	<b>156</b>	<b>45</b>	<b>182</b>	<b>19</b>	<b>1</b>	<b>1</b>	<b>25</b>	<b>4</b>	<b>165</b>	<b>3</b>	<b>2</b>
<b>PERCENTAGE</b>		<b>77.6%</b>	<b>22.4%</b>	<b>90.5%</b>	<b>9.5%</b>	<b>0.5%</b>	<b>0.5%</b>	<b>12.4%</b>	<b>2.0%</b>	<b>82.1%</b>	<b>1.5%</b>	<b>1.0%</b>

**Table 2t. Doctoral Degree Graduate Demographics from October 16, 2005-October 15, 2006**

SCHOOLS	Total Graduates	Gender		Race						
		F	M	AI/AN	Asian	Black	Hispanic	White	Other	NonUS
East Tennessee State University	2	2	0	0	0	0	0	2	0	0
UT Health Science Center	8	7	1	0	0	1	2	5	0	0
UT Knoxville	5	5	0	0	0	1	0	4	0	0
Vanderbilt University	2	2	0	0	0	0	0	1	0	1
<b>TOTAL</b>	<b>17</b>	<b>16</b>	<b>1</b>	<b>0</b>	<b>0</b>	<b>2</b>	<b>2</b>	<b>12</b>	<b>0</b>	<b>1</b>
<b>PERCENTAGE</b>		<b>94.1%</b>	<b>5.9%</b>	<b>0.0%</b>	<b>0.0%</b>	<b>11.8%</b>	<b>11.8%</b>	<b>70.6%</b>	<b>0.0%</b>	<b>5.9%</b>

**Table 2u. Doctoral Degree Enrollment (as of October 15<sup>th</sup> of Each Year) and Graduation Trends**

SCHOOLS	Enrollment Trends			Graduation Trends		
	2004	2005	2006	2003-2004	2004-2005	2005-2006
East Tennessee State University	15	20	21	0	1	2
UT Health Science Center	58	88	125	9	21	8
UT Knoxville	21	29	29	3	3	5
Vanderbilt University	20	20	26	6	1	2
<b>TOTAL</b>	<b>114</b>	<b>157</b>	<b>201</b>	<b>18</b>	<b>26</b>	<b>17</b>
<b>PERCENT CHANGE</b>		<b>37.7%</b>	<b>28.0%</b>		<b>44.4%</b>	<b>(34.6%)</b>

Figure 2u-1. Doctoral Degree Enrollment Trend Line  
(Enrollment as of October 15<sup>th</sup> of each year)

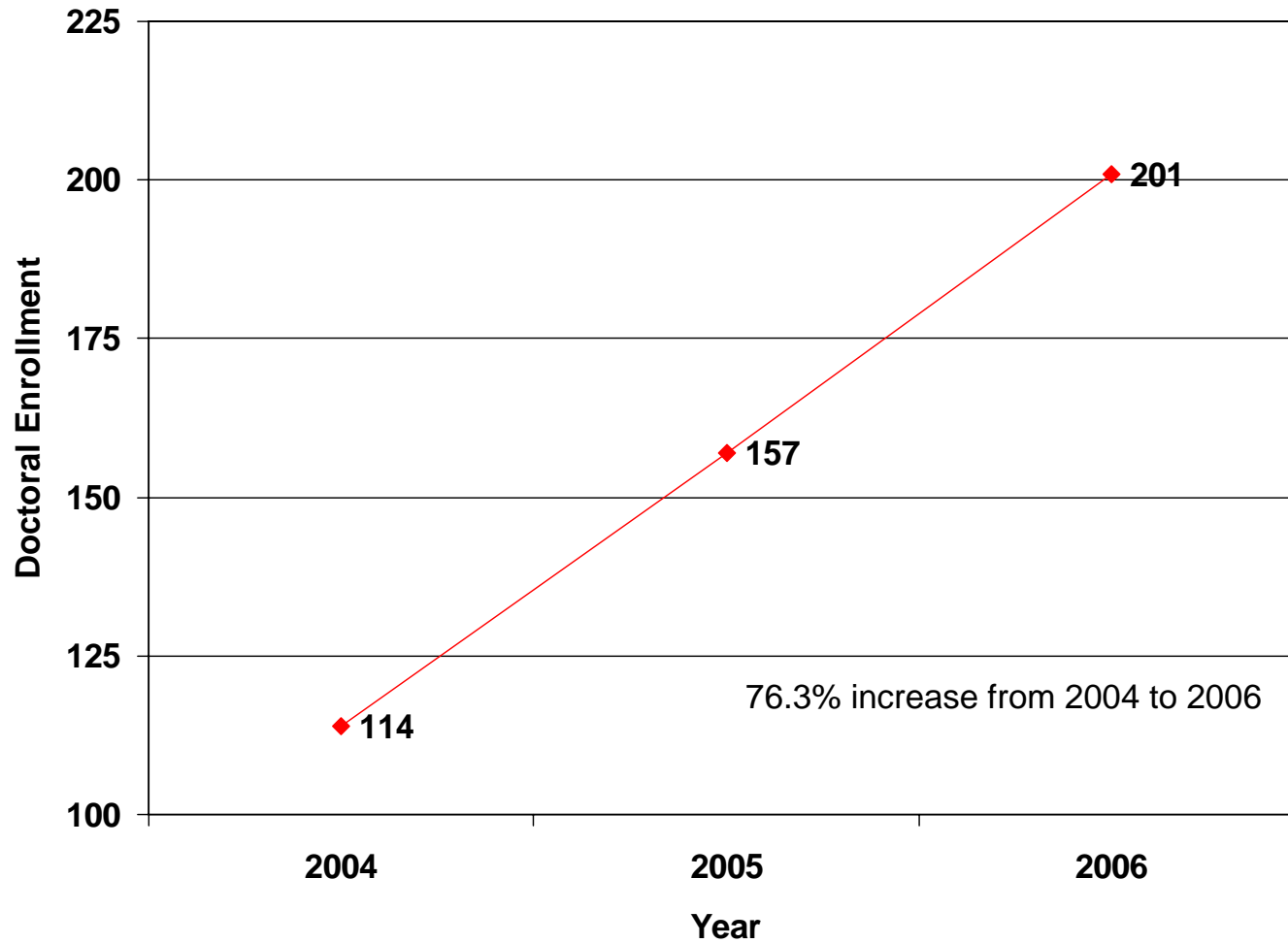
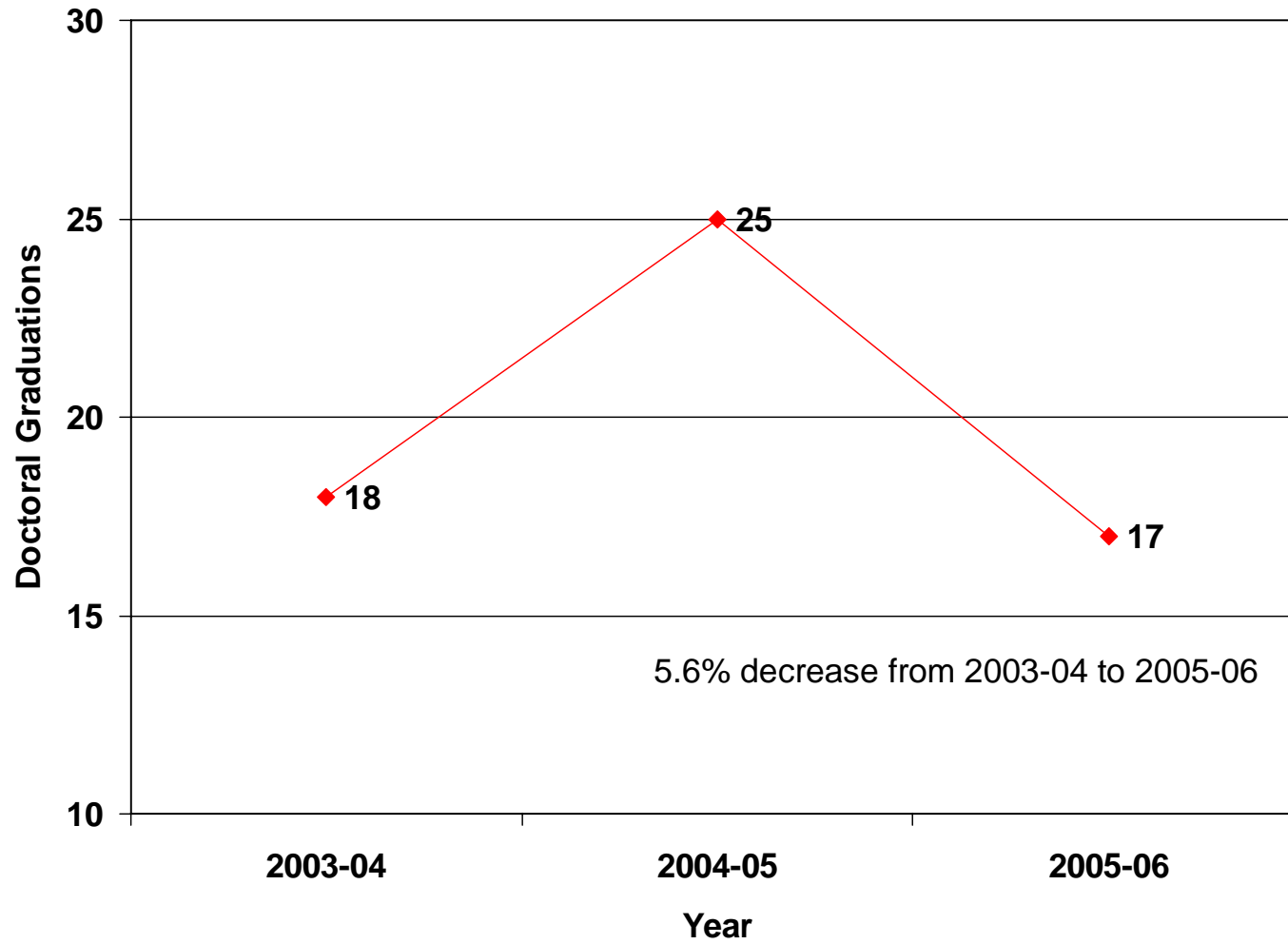


Figure 2u-2. Doctoral Degree Graduation Trend Line



**Table 2v. Number of Programs Reporting Significant Change (>10%) in Enrollment since October 15, 2005**

Program	Number of Programs	Number Programs with Significant Change (>10%)	
		Increase	Decrease
Associate Degree	14	3	
Baccalaureate Degree	28	11	2
Master's Degree	16	8	
Post-Master's Certificate	10 <sup>a</sup>	1	2
Doctoral Degree	4		
<b>TOTAL</b>	<b>62</b>	<b>23</b>	<b>4</b>

<sup>a</sup>Not included in total because already counted in Master's Degree

### 3. AVAILABILITY OF CLINICAL RESOURCES

**Table 3a. Number of Schools Reporting Adequate Clinical Resources Available to Meet Needs of Undergraduate Curriculum by Specialty as of October 15, 2006**

Specialty	Number of Schools Reporting Adequate Resources n(%) of 39	Number of Schools Reporting Inadequate Resources n(%) of 39	Number of Schools Reporting Resources Not Applicable n(%) of 39	Number of Schools Not Reporting Data n(%) of 39
Medical/Surgical Nursing	34 (87.2)	3 (7.7)	1 (2.6)	1 (2.6)
Psychiatric/Mental Health Nursing	31 (79.5)	5 (12.8)	1 (2.6)	2 (5.1)
Geriatric Nursing	31 (79.5)	3 (7.7)	1 (2.6)	4 (10.3)
Maternal/Neonatal Nursing	29 (74.4)	7 (17.9)	1 (2.6)	2 (5.1)
Pediatric Nursing	26 (66.7)	10 (25.6)	1 (2.6)	2 (5.1)
Community Health Nursing	26 (66.7)	4 (10.3)	5 (12.8)	4 (10.3)
Other (please specify):				
Home Health	1 (2.6)			
ICU		1 (2.6)		
Leadership and Management	1 (2.6)			
Preceptors for Leadership	1 (2.6)			

**Table 3b. Main Factors Perceived as Creating the Limited Clinical Resources as of October 15, 2006**

<b>Number of Schools reporting at least one inadequate resource available reported in Table 3a.</b>	13 of 39 (33.3%)
<b>Main factors perceived as creating limited clinical resources</b>	<b>Number of Schools</b>
Too Many Professional Nursing Students	10
Clinical Resources Not Available in the Community	8
Poor Scheduling/Coordination	6
Too Many Practical Nursing Students	4
Agencies Not Responsive to Needs of School	4
<b>TOTAL</b>	<b>32<sup>a</sup></b>

<sup>a</sup>Not mutually exclusive

**Table 3c. Average Faculty-Student (Undergraduate) Clinical Ratio as of October 15, 2006**

<b>Average Ratio</b>	<b>Ratio Range</b>
1:8	1:6 – 1:10

#### 4. PROGRAM EVALUATION

**Table 4a. Average Retention Rates of Each Class of Graduates from October 16, 2005 – October 15, 2006**

*“Retention Rate” is defined as the percentage of the class (admitted to the nursing program) completing the nursing program within 150% of the required length of the program, e.g., completing a four semester program within six semesters, a five semester program within seven semesters, or a six semester program within nine semesters.*

Program	Number of Programs	Number of Programs Reporting	Average Retention Rate (%)	Retention Rate Range (%)
Associate Degree	14	13	73.9	58-90
Basic BSN	24	18	87.9	73-100
Accelerated Second-Degree BSN	5	5	95.2	90-100
LPN-BSN	6	1	100	N/A
RN-BSN	22	15	86.5	35-100
Non-RN to MSN (Initial RN Licensure)	2	2	96.5	95-98
Basic MSN	16	11	93.1	56-100

**Table 4b. Summary of Assessment/Proficiency Test of Exiting Undergraduate Students as of October 15, 2006**

<b>Number of Schools Requiring an Assessment/Proficiency Test</b>	37 of 39 (94.9%)
<b>Type of Test</b>	<b>Number of Schools</b>
HESI	19
ATI	9
Mosby	3
NLN	2
Arnett	2
ERI	2
Diagnostic Readiness Test	1
Meds Publishing	1
Kaplan	1
<b>TOTAL</b>	<b>40<sup>a</sup></b>

<sup>a</sup>Some schools use more than one type of test

**Table 4c. Number of Schools Reporting Relationship between Assessment and NCLEX Pass Rate**

Number of Schools Reporting Relationship	22 of the 37 Schools (59.5%) that require an Assessment/Proficiency Test in Table 4b. reported a relationship with the NCLEX pass rate.
--	---

## 5. FACULTY SUMMARY

**Table 5a. Number of Full-time and Part-time (Headcount and FTE) Faculty by School as of October 15, 2006**

School	Programs offered	Nursing Faculty				Non-Nursing Faculty			
		FT	PT (HC <sup>a</sup> )	PT (FTE)	Total <sup>b</sup>	FT	PT (HC <sup>a</sup> )	PT (FTE)	Total <sup>b</sup>
Aquinas College	ADN/BSN	12	28	11.00	40	-	-	-	-
Austin Peay State University	BSN/MSN	17	-	-	17	-	-	-	-
Baptist Memorial College of Health Sciences	BSN	30	15	4.00	45	2	-	-	2
Belmont University	BSN/MSN/Post Masters	17	26	9.34	43	-	-	-	-
Bethel College	BSN	3	5	1.70	8	-	-	-	-
Carson-Newman College	BSN/MSN/Post Masters	13	20	6.30	33	-	-	-	-
Chattanooga State Technical CC	ADN	17	9	6.00	26	-	-	-	-
Cleveland State Community College	ADN	10	7	-	17	-	-	-	-
Columbia State Community College	ADN	12	13	11.50	25	-	-	-	-
Cumberland University	BSN	9	8	3.00	17	-	1	.50	1
Dyersburg State Community College	ADN	7	5	-	12	-	-	-	-
East Tennessee State University	BSN/MSN/Post Masters/DOC	47	10	5.81	57	1	-	-	1
Fisk University	BSN	2	-	-	2	-	-	-	-
Freed-Hardeman University	ADN	3	3	.60	6	-	-	-	-
Jackson State Community College	ADN	20	3	1.30	23	-	-	-	-
King College	BSN/MSN	14	8	-	22	-	1	-	1
Lincoln Memorial University	ADN/BSN/MSN	21	-	-	21	-	-	-	-
Lipscomb University	BSN	2	-	-	2	-	-	-	-
Martin Methodist	BSN	3	-	-	3	-	-	-	-
Methodist Healthcare	Diploma Only	3	-	-	3	2	-	-	2
Middle Tennessee State University	BSN/MSN	25	15	-	40	-	-	-	-
Milligan College	BSN	5	5	1.50	10	-	-	-	-
Motlow State Community College	ADN	8	9	3.60	17	-	-	-	-
Roane State Community College	ADN	17	12	4.50	29	-	-	-	-
South College	BSN	5	5	2.00	10	-	-	-	-
Southern Adventist University	ADN/BSN/MSN/Post Masters	15	2	1.50	17	-	1	.50	1
Southwest TN Community College	ADN	14	15	7.84	29	-	-	-	-
<b>(continued)</b>									

<b>(continued)</b>									
<b>School</b>	<b>Programs offered</b>	<b>Nursing Faculty</b>				<b>Non-Nursing Faculty</b>			
		<b>FT</b>	<b>PT (HC<sup>a</sup>)</b>	<b>PT (FTE)</b>	<b>Total<sup>b</sup></b>	<b>FT</b>	<b>PT (HC<sup>a</sup>)</b>	<b>PT (FTE)</b>	<b>Total<sup>b</sup></b>
Tennessee State University	ADN/BSN/MSN/Post Masters	29	14	-	43	1	-	-	1
Tennessee Technological University	BSN/MSN	11	6	-	17	-	-	-	-
Tennessee Wesleyan College	BSN	9	6	-	15	-	-	-	-
Trevecca Nazarene University <sup>9</sup>	BSN								
Union University	BSN/MSN/Post Masters	26	3	1.75	29	-	-	-	-
University of Memphis	BSN/MSN	32	34	15.30	66	-	-	-	-
University of Phoenix	BSN	1	8	-	9	-	1	-	1
UT Chattanooga	BSN/MSN/Post Masters	16	8	-	24	-	-	-	-
UT Health Science Center	BSN/MSN/Post Masters/DOC	33	8	3.75	41	2	-	-	2
UT Knoxville	BSN/MSN/Post Masters/DOC	43	13	5.50	56	-	2	.50	2
UT Martin	BSN	13	-	-	13	-	-	-	-
Vanderbilt University	MSN/Post Masters/DOC	174	44	16.71	218	9	4	1.08	13
Walters State Community College	ADN	18	13	6.8	31	-	-	-	-
<b>TOTAL</b>		<b>756<sup>c</sup></b>	<b>380<sup>d</sup></b>	<b>131.30<sup>e</sup></b>	<b>1136<sup>f</sup></b>	<b>17<sup>c</sup></b>	<b>10<sup>d</sup></b>	<b>2.58<sup>e</sup></b>	<b>27<sup>f</sup></b>

<sup>a</sup>HC=Headcount

<sup>b</sup>Total includes FT and PT (HC)

<sup>c</sup>Total Full-time Faculty (Nursing and Non-Nursing): 756+17=773

<sup>d</sup>Total Part-time (Headcount) Faculty (Nursing and Non-Nursing): 380+10=390

<sup>e</sup>Total part-time (FTE) Faculty (Nursing and Non-Nursing): 131.30+2.58=133.88

<sup>f</sup>Total Faculty (Nursing and Non-Nursing): 1136+27=1163

<sup>9</sup>Trevecca Nazarene University utilizes faculty from Belmont University

**Table 5b. Faculty Status Demographics Summary of All Schools as of October 15, 2006**

Race <sup>a</sup>	Nursing Faculty			Non-Nursing Faculty		
	FT	PT	Total	FT	PT	Total
American Indian/Alaskan Native	3	1	4	0	0	0
Asian/Pacific Islander	9	4	13	1	0	1
Black, Non-Hispanic	69	33	102	0	0	0
Hispanic	4	1	5	0	0	0
White, Non-Hispanic	670	334	1004	14	10	24
Other Race/Unknown	0	7	7	0	0	0
Non-U.S. Resident	0	0	0	0	0	0
<b>TOTAL</b>	<b>755</b>	<b>380</b>	<b>1135</b>	<b>15</b>	<b>10</b>	<b>25</b>
<b>Gender<sup>a</sup></b>						
Female	713	357	1070	8	7	15
Male	44	23	67	6	3	9
<b>TOTAL</b>	<b>757</b>	<b>380</b>	<b>1137</b>	<b>14</b>	<b>10</b>	<b>24</b>

<sup>a</sup>As reported by respondent

**Table 5c. Number of Budgeted Unfilled Full-time Nurse Faculty Positions for 2006-2007 Academic Year by Specialty**

<b>Number of Schools Reporting Budgeted Unfilled Full-time Nurse Faculty Positions</b>	20 of 39 Schools (51.3%) <sup>a</sup>
<b>Specialty</b>	<b>Number of Budgeted Unfilled Full-time Nursing Faculty Positions</b>
Medical/Surgical Nursing	9
Adult Health Nursing	7
Pediatric Nursing	7
Psychiatric/Mental Health Nursing	5
Maternal/Infant Nursing	4
Community Health	2
Other (please specify):	
Administrative Roles	4
Holistic	3
Director	1
Broad Nurse Generalist Experience	1
Pre-specialty	1
Pathophysiology, Assessment, Leadership/Management	1
<b>TOTAL</b>	<b>45</b>

<sup>a</sup>Of the 20 institutions reporting budgeted unfilled full-time nurse faculty positions, 10 (50%) are Public Institutions and 10 (50%) are Private Institutions.

**Table 5d. Number of Full-time Faculty Who Retired or Resigned  
During 2005-2006 Academic Year**

<b>Retired Faculty</b>	
Total Number of Schools Reporting Nurse Faculty Retirement	8 of 39 Schools (20.5%)
Number of Retired Nurse Faculty	8
<b>Faculty Resignations</b>	
Total Number of Schools Reporting Nurse Faculty Resignations	24 of 39 Schools (61.5%)
<b>Reason for Resignation</b>	<b>Number of Resigned Faculty</b>
Career Advancement	19
Return to Clinical Practice	13
Family Responsibilities	10
Salary/Benefits	2
Relocation of Spouse	2
Workload Issues	2
Other (please specify):	
Unknown	9
School is closing	4
Better opportunities	2
Relocation	2
Death	1
Driving distance to work	1
Mutual agreement	1
Was not renewed	1
Personal	1
<b>TOTAL</b>	<b>70</b>

**Table 5e. Summary of Faculty Teaching Responsibilities Outside Area of Master's Specialization as of October 15, 2006**

<b>Number of Schools that have faculty teaching responsibilities outside their area of master's specialization.</b>	25 of 39 Schools (64.1%)
<b>Types of Courses</b>	<b>Number of Schools</b>
Didactic	2
Clinical	5
Both	15
Unspecified	3
<b>TOTAL</b>	<b>25</b>
<b>Areas in which you do not have faculty with master's specialization</b>	
Pediatrics	4
Psychiatric/Mental Health	4
Community Health	3
Adult Health	2
Maternal/Newborn/Child Health	2
Administration/Management	1
Clinicals	1
Lab Coordinator	1
Nursing Education	1
Women's Health	1
<b>TOTAL</b>	<b>21</b>