

**TENNESSEE BOARD OF NURSING
STATE APPROVED PROFESSIONAL NURSING PROGRAMS
ANNUAL REPORT 2007**

**PREPARED BY:
EAST TENNESSEE STATE UNIVERSITY
COLLEGE OF NURSING
CENTER FOR NURSING RESEARCH**

**PATRICIA L. SMITH, EDD, MSN, RN
DEBI T. PFORTMILLER, MA**

**UNDER CONTRACT WITH:
THE TENNESSEE CENTER FOR NURSING**

Table of Contents:

Highlights..... 4

1. PARENT INSTITUTION AND PROGRAM CHARACTERISTICS

Table 1a. Administrative Control of Parent Institution 8

Table 1b. Total Nursing Programs Offered in Tennessee and Administrative Control of Parent Institution..... 8

Table 1c. Total Schools in Tennessee by Type of Program and Accreditation Status 8

Table 1d. Programs/Tracks/Specialties Currently Offered and Programs Plan to Offer..... 9

Table 1e. Programs/Tracks Currently Offered by Source of Delivery 11

2. ENROLLMENT AND GRADUATION DATA

Table 2a. Associate Degree in Nursing Enrollment 12

Table 2b. Associate Degree in Nursing Enrollment Demographics 13

Table 2c. Associate Degree in Nursing Graduate Demographics 14

Table 2d. Diploma Program/Associate Degree in Nursing Enrollment Trends 15

Figure 2d. Associate Degree in Nursing Enrollment Trend Line 16

Table 2e. Diploma Program/Associate Degree in Nursing Graduation Trends 17

Figure 2e. Associate Degree in Nursing Graduation Trend Line 18

Table 2f. Bachelor of Science in Nursing Degree Enrollment 19

Table 2g. Bachelor of Science in Nursing Degree Enrollment Demographics..... 21

Table 2h. Bachelor of Science in Nursing Degree Graduate Demographics..... 23

Table 2i. Bachelor of Science in Nursing Degree Enrollment Trends 25

Figure 2i. Bachelor of Science in Nursing Degree Enrollment Trend Line..... 27

Table 2j. Bachelor of Science in Nursing Degree Graduation Trends 28

Figure 2j. Bachelor of Science in Nursing Degree Graduation Trend Line 30

Table 2k. Master of Science in Nursing/Master of Science Degree Enrollment 31

Table 2l. Master of Science in Nursing/Master of Science Degree Enrollment Demographics 32

Table 2m. Master of Science in Nursing/Master of Science Degree Graduate Demographics 33

Table 2n. Master of Science in Nursing/Master of Science Degree Enrollment Trends 34

Figure 2n. Master of Science in Nursing/Master of Science Degree Enrollment Trend Line..... 35

Table 2o. Master of Science in Nursing/Master of Science Degree Graduation Trends 36

Figure 2o. Master of Science in Nursing/Master of Science Degree Graduation Trend Line 37

Table 2p. Post-Master’s Certificate Enrollment Demographics..... 38

Table 2q. Post-Master’s Certificate Graduate Demographics..... 38

Table 2r. Post-Master’s Certificate Enrollment Trends 39

Figure 2r. Post-Master’s Certificate Enrollment Trend Line 40

Table 2s. Post-Master’s Certificate Graduation Trends 41

Figure 2s. Post-Master’s Certificate Graduation Trend Line 42

Table 2t. Master of Science in Nursing/Master of Science Degree and Post-Master’s Certificate Enrollment and Graduation by Specialty 43

Table 2u. Initial RN Licensure Enrollment Demographics..... 44

Table 2v. Initial RN Licensure Graduate Demographics 46

Table 2w. Doctoral Degree Program Available Degrees and Specialty Focus..... 48

Table 2x. Doctoral Degree Enrollment Demographics..... 48

Table 2y. Doctoral Degree Graduate Demographics 48

Table 2z. Doctoral Degree Enrollment Trends 49

Figure 2z. Doctoral Degree Enrollment Trend Line..... 49

Table 2aa. Doctoral Degree Graduation Trends	50
Figure 2aa. Doctoral Degree Graduation Trend Line	50
Table 2bb. Number of Programs Reporting Significant Change (>10%) in Enrollment	51
3. AVAILABILITY OF CLINICAL RESOURCES	
Table 3a. Number of Schools Reporting Adequate Clinical Resources Available to Meet Needs of Undergraduate Curriculum.....	52
Table 3b. Main Factors Perceived as Creating the Limited Clinical Resources	53
Table 3c. Average Faculty-Student (Undergraduate) Clinic Ratio	53
4. PROGRAM EVALUATION	
Table 4a. Average Retention Rates of Each Class of Graduates.....	54
Table 4b. Summary of Assessment/Proficiency Test of Exiting Undergraduate Students	54
Table 4c. Number of Schools Reporting Relationship between Assessment and NCLEX Pass Rate	54
5. FACULTY SUMMARY	
Table 5a. Number of Full-time and Part-time (Headcount and FTE) Faculty by School.....	55
Table 5b. Faculty Status Demographics Summary of All Schools	57
Table 5c. Number of Budgeted Unfilled Full-time Nurse Faculty Positions	57
Table 5d. Number of Full-time Faculty Who Retired or Resigned	58
Table 5e. Summary of Faculty Teaching Responsibilities Outside Area of Specialization.....	59
Table 5f. Summary of Schools that have Insufficient Faculty to Conduct Program	59

Highlights

- The findings in this report are based on the 41 Schools of Nursing in Tennessee that offer Associate Degree in Nursing, Bachelor of Science in Nursing, or graduate degree nursing programs. The schools were surveyed in Fall 2007 and the report is based upon October 2007 data. Of these 41 Schools of Nursing, 20 are affiliated with public colleges and universities, 15 are within private-religious institutions, and six (6) are under the administrative control of private-independent colleges and universities.

Enrollment as of October 15, 2007

- A total of 3,140 students are enrolled in the 15 Associate Degree in Nursing Programs in Tennessee; 12.4% are male and 15.7% are from racial and ethnic minorities.
- A total of 3,854 students are enrolled in the 24 BSN Initial RN Licensure programs and 919 are enrolled in the 21 RN-BSN programs for a grand total of 4,773 Bachelor of Science in Nursing Degree students. Males account for 11.1% of all BSN nursing students and 17.5% are from racial and ethnic minorities.
- A total of 309 students are enrolled in two (2) Master of Science in Nursing for Initial RN Licensure programs, 1,674 in seventeen MSN/MS Degree programs for a total of 1,983 Master of Science in Nursing/Master of Science students. Males account for 10.7% of all MSN/MS nursing students and 15.4% are from racial and ethnic minorities. There are 53 students currently enrolled in thirteen Post-Master's Certificate programs.
- A total of 227 students are enrolled in four (4) Doctoral Degree programs; 11.9% are male and 22% are from racial and ethnic minorities.

Graduations from October 16, 2006 – October 15, 2007

- A total of 1,258 students graduated from Associate Degree in Nursing programs; 12.1% were male and 16% were from racial and ethnic minorities.
- A total of 1,263 students graduated from BSN Initial RN Licensure programs and 428 graduated from RN-BSN programs for a grand total of 1,691 Bachelor of Science in Nursing Degree graduates. Males accounted for 12.1% of all BSN graduates and 16.6% were from racial and ethnic minorities.
- A total of 134 students graduated from the Master of Science in Nursing for Initial RN Licensure programs, 457 from Master of Science in Nursing/Master of Science Degree programs for a total of 591 MSN/MS graduates. Males accounted for 14.7% of all MSN/MS graduates and 14% were from racial and ethnic minorities. Fifteen students completed Post-Master's Certificates.
- A total of 18 students graduated from the Doctoral Degree programs; 11.1% were male and 16.7% were from racial and ethnic minorities.

Year 2010 Goals from "Curing the Crisis in Nursing Education: A Master Plan for Tennessee"

- The goal for ADN graduations by 2010 is 1,234; 101.9% of that goal was reached by the 1,258 ADN graduates in 2006-2007.
- The goal for BSN Initial Licensure graduations by 2010 is 1,957; 64.5% of that goal was reached by the 1,263 BSN Initial Licensure graduates in 2006-2007.
- The goal for MSN Initial Licensure by 2010 is 236; 56.8% of that goal was reached by the 134 MSN Initial Licensure graduates in 2006-2007.
- The goal for RN-BSN graduations by 2010 is 466; 91.8% of that goal was reached by the 428 RN-BSN graduates in 2006-2007.
- The goal for RN-MSN graduations by 2010 is 512; 80.0% of that goal was reached by the 410 RN-MSN graduates in 2006-2007.
- The goal for Doctoral graduations by 2010 is 44; 40.9% of that goal was reached by the 18 Doctoral graduates in 2006-2007.

Two-year Comparisons in Enrollment (Based on data from the same institutions reporting in both 2006 and 2007)

- Enrollment in all Associate Degree in Nursing programs has increased by 1.7% (51 students) over the past two years ($p=.828$).
- Enrollment in BSN Initial RN Licensure programs has increased by 1.8% (68 students) ($p=.825$); RN-BSN enrollment has increased by 8.4% (71 students) ($p=.375$). Enrollment in all Bachelor of Science in Nursing Degree programs has increased by 3% (139 students) over the past two years ($p=.803$).
- Enrollment in the MSN for Initial RN Licensure programs has decreased by 9.9% (34 students) ($p=.416$); MSN/MS enrollment has significantly increased by 41.3% (489 students) ($p=.003$); Enrollment in all Master of Science in Nursing/Master of Science Degree programs has significantly increased by 29.8% (455 students) over the past two years ($p=.002$). Post-Master's Certificate enrollment has significantly increased 47.2% (17 students) ($p=.023$).
- Enrollment in the Doctoral Degree programs has increased by 12.9% (26 students) over the past 2 years ($p=.360$).
- Overall enrollment in all nursing programs in Tennessee has increased by 7.3% (688 students) over the past two years ($p=.184$)

Six-year Comparisons in Enrollment (Based on data from the same institutions reporting in all years 2002-2007)

*(Only four years of data are available for the Baccalaureate Degree programs, Post-Master's Certificate, and Doctoral Degree programs)

- Enrollment in all Associate Degree in Nursing programs has significantly increased by 34.3% (802 students) over the past six years ($p=.002$). The average increase of the six years is approximately 5.7% (134 students) per year.
- * Enrollment in BSN Initial RN Licensure programs has increased by 22.2% (701 students) over the past four years ($p=.315$); the average increase of the four years is approximately 5.6% (175 students) per year. RN-BSN enrollment has increased by 37.0% (248 students) over the past four years ($p=.200$); the average increase of the four years is approximately 9.3% (62 students) per year. Enrollment in all Bachelor of Science in Nursing Degree programs has significantly increased by 24.8% (949 students) over the past four years ($p=.001$); the average increase of the four years is approximately 6.2% (237 students) per year.
- Enrollment in the MSN for Initial RN Licensure programs has decreased by 2.5% (8 students) over the past six years ($p=.156$); the average decrease of the six years is approximately 0.4% (1 student) per year. MSN/MS enrollment has significantly increased by 258% (1,207 students) over the past six years ($p=.012$); the average increase of the six years is approximately 43% (201 students) per year. Enrollment in all Master of Science in Nursing/Master of Science Degree programs has significantly increased by 152.9% (1,199 students) over the past six years ($p=.011$); the average increase of the six years is approximately 25.5% (200 students) per year. *Post-Master's Certificate enrollment has increased 178.9% (34 students) over the past four years ($p=.477$); the average increase of the four years is approximately 44.7% (9 students) per year.
- *Enrollment in the four Doctoral Degree programs has increased by 99.1% (113 students) over the past four years ($p=.270$). The average increase of the four years is approximately 24.8% (28 students) per year.
- Overall enrollment in all nursing programs in Tennessee has significantly increased by 79.7% (4,513 students) over the past six years ($p<.001$). The average increase of the six years is approximately 13.3% (752 students) per year.

Two-year Comparisons in Graduations (Based on data from the same institutions reporting in both 2006 and 2007)

- The number of graduates in all Associate Degree in Nursing programs has increased by 5.4% (65 students) over the past two years ($p=.493$).
- The number of graduates in BSN Initial RN Licensure programs has increased by 4.6% (56 students) ($p=.784$), and RN-BSN graduates have increased by 41.7% (126 students). The number of graduates in all Bachelor of Science in Nursing Degree programs has increased by 12.1% (182 students) over the past two years ($p=.474$).
- The number of graduates in the MSN for Initial RN Licensure programs has decreased by 13% (20 students) ($p=.430$); MSN/MS graduates have increased by 32.5% (112 students). The number of graduates in all Master of Science in Nursing/Master of Science Degree programs has increased by 18.4% (92 students) over the past two years ($p=.307$). Post-Master's graduates have decreased by 37.5% (9 students) ($p=.280$).
- The number of graduates in the Doctoral Degree programs has increased by 5.9% (1 student) over the past two years ($p=.761$).
- Overall, the number of graduates in all nursing programs in Tennessee has increased by 10.2% (331 students) over the past two years ($p=.219$).

Four-year Comparisons in Graduations (Based on data from the same institutions reporting in all years 2004-2007)

- The number of graduates in all Associate Degree in Nursing programs has significantly increased by 26.3% (262 students) over the past four years ($p=.005$). The average increase of the four years is approximately 6.6% (66 students) per year.
- The number of graduates in BSN Initial RN Licensure programs has significantly increased by 67.1% (507 students) over the past four years ($p=.001$); the average increase of the four years is approximately 16.8% (127 students) per year. The number of graduates in RN-BSN has increased by 61.5% (163 students) over the past four years ($p=.082$); the average increase of the four years is approximately 15.4% (41 students) per year. The number of graduates all Bachelor of Science in Nursing Degree programs has significantly increased by 65.6% (670 students) over the past four years ($p=.001$); the average increase of the four years is approximately 16.4% (167 students) per year.
- The number of graduates in the MSN for Initial RN Licensure programs has decreased by 4.3% (6 students) over the past four years ($p=.656$); the average decrease of the four years is approximately 1.1% (2 students) per year. The number of graduates in the MSN/MS program has significantly increased by 79.2% (202 students) over the past four years ($p=.039$); the average increase of the four years is approximately 19.8% (50 students) per year. The number of graduates in all Master of Science in Nursing/Master of Science Degree programs has significantly increased by 49.6% (196 students) over the past four years ($p=.025$); the average increase of the four years is approximately 12.4% (49 students) per year. The number of graduates in the Post-Master's Certificate program has increased 25.1% (3 students) over the past four years ($p=.295$); the average increase of the four years is approximately 6.25% (1 student) per year.
- The number of graduates in the Doctoral Degree programs has not changed over the past four years.
- Overall, the number of graduates in all nursing programs in Tennessee has significantly increased by 46.1% (1,128 students) over the past four years ($p<.001$). The average increase of the four years is approximately 11.5% (282 students) per year.

Qualified Applicants Not Admitted to Tennessee Nursing Programs During the 2006-2007 Year (Of those who reported having qualified applicants not admitted, some did not provide the number of applicants not admitted)

- Twelve of fifteen Associate Degree in Nursing programs reported having 1,088 qualified applicants not admitted. The most frequently reported factors preventing admission of more students in order of priority were 1) limited classroom space, 2) lack of faculty to supervise clinicals, and 3) limited clinical sites.
- Fourteen of twenty-eight Bachelor of Science in Nursing Degree programs reported having 794 qualified applicants not admitted. The most frequently reported factors preventing admission of more students in order of priority were 1) lack of faculty for classroom teaching, 2) lack of faculty to supervise clinicals, and 3) limited classroom space.
- Six of seventeen Master of Science in Nursing/Master of Science Degree programs reported having 361 qualified applicants not admitted. The most frequently reported factors preventing admission of more students in order of priority were 1) limited clinical sites/preceptors, 2) lack of faculty to supervise clinicals, and 3) lack of faculty for classroom teaching.

Retention Rates

- The average retention rate of all Associate Degree in Nursing programs was 74.8%.
- The average retention rate of all Bachelor of Science in Nursing Degree programs was 87.7%.
- The average retention rate of all Master of Science in Nursing/Master of Science Degree programs was 92.9%.

Faculty Summary

- For all 41 Schools of Nursing, there are 708 full-time Nursing Faculty and 389 part-time (headcount) Nursing Faculty for a total of 1,097 Nursing Faculty. Of those 6.8% are male and 12.5% are from racial and ethnic minorities.
- Nineteen schools (46.3%) reported having a total of 55 budgeted, unfilled full-time nursing faculty positions. Of those 19 schools, 12 (63.2%) are public institutions.
- Of the 41 Schools of Nursing, thirteen (31.7%) schools reported a total of 18 Nurse Faculty retirements.
- Of the 41 Schools of Nursing, 21 (51.2%) schools reported a total 59 Nurse Faculty resignations. The most frequent reasons reported for Nurse Faculty resignations were 1) return to clinical practice, 2) career advancement, and 3) salary/benefits.
- Sixteen schools (39.0%) reported insufficient faculty to conduct their program. The most frequent reasons reported for insufficient faculty were 1) lack of qualified applicants, 2) salary levels, and 3) lack of budgeted positions.

1. PARENT INSTITUTION AND PROGRAM CHARACTERISTICS

**Table 1a. Administrative Control of Parent Institution
for Nursing Schools in Tennessee**

Administrative Control	Number of Parent Institutions
Private (Independent)	6
Private (Religious)	15
Public	20
TOTAL	41

Table 1b. Total Nursing Programs Offered in Tennessee and Administrative Control of Parent Institution

Type of Program	Number of Programs Currently Offered	Administrative Control of Parent Institution		
		Private (Independent)	Private (Religious)	Public
Associate Degree in Nursing	15	1	3	11
Bachelor of Science in Nursing	28	5	13	10
Master of Science in Nursing	16	2	5	9
Post-Master's Certificate ^a	(13)			
Master of Science	1	0	1	0
Doctoral Degree	4	1	0	3
TOTAL	64			

^aNot included in total because already counted in Master's Degree

Table 1c. Total Schools in Tennessee by Type of Program and Accreditation Status

Type of Program	Number of Accreditable Programs Currently Offered	Number Accredited				Number Not Accredited
		NLNAC	CCNE	Both	AANA CAO	
Associate Degree in Nursing	15	13	0	0	0	2 ^a
Bachelor of Science in Nursing	28	8	14	2	0	4 ^a
Master of Science in Nursing	16	6	9	0	0	1 ^a
Master of Science	1	0	0	0	1	0
TOTAL	60	27	23	2	1	7

^aNew program(s)

Table 1d. Programs/Tracks/Specialties Currently Offered and Programs Plan to Offer

Programs/Tracks/Specialties	Number Currently Offered	Number Plan to Offer (Within 3 Years)
LPN to Associate Degree Program	13	1
Associate Degree	15	
Basic BSN Degree	24	
Accelerated Second-Degree BSN	6	
LPN to BSN Degree	9	2
RN to BSN Degree	22	2
Non-RN to MSN (Initial licensure)	2	1
Professional Entry MSN/CNL		1
Basic MS Degree	1	
Basic MSN Degree	16	2
FNP	7	
Nurse Educator	5	1
Nurse Administrator	3	
Nurse Anesthesia	2	1
Acute Care NP	1	
Adult NP	1	
Geriatric NP	1	
MSN in Management		1
Neonatal NP	1	
Nursing Informatics	1	
NP/CNS Adult and Child	1	
Psychiatric NP	1	
ADN/Diploma RN to MSN	6	
BS and Bridge Curriculum to MSN	1	
FNP	1	
Nurse Educator	1	
Dual Degree MSN (please specify)		
MSN/MBA	3	
MSN/MDIV	1	
MSN/MTS	1	
FNP/NE	1	
(continued)		

(continued)		
Programs/Tracks/Specialties	Number Currently Offered	Number Plan to Offer (Within 3 Years)
Post-Master's Certificate (please specify)		
FNP	9	1
Nurse Educator	4	
All specialty areas	2	
Acute Care	1	
Adult	1	
ANP	1	
Geriatric	1	
Holistic Nursing	1	
NP/CNS Adult and Child	1	
Nursing Administration	1	
Nurse Anesthesia	1	1
Psychiatric	1	
Doctoral Degree (please specify)		
PhD	4	
DNP	1	5
Nursing		1
Other Programs (please specify)		
Paramedic to RN	1	
RODP consortium and Post-Master's through program	1	

Table 1e. Programs/Tracks Currently Offered by Source of Delivery

Programs/Tracks	Number of Programs/Tracks	Traditional Day Program	Evening/Weekend Program	Online Courses Available	All didactic courses Online-RODP	All didactic courses Online-Non-RODP
LPN to Associate Degree	13	10	3	2	0	0
Associate Degree	15	15	2	3	0	0
Basic BSN Degree	24	24	3	7	0	0
Accelerated Second-Degree BSN	6	5	0	4	1	0
LPN to BSN Degree	9	6	4	6	0	0
RN to BSN Degree	22	12	7	13	0	1
Non-RN to MSN (Initial licensure)	2	2	0	0	0	0
Basic MS Degree	1	1	0	0	0	0
Basic MSN Degree	16	11	3	8	5	3
ADN/Diploma RN to MSN	6	4	2	4	2	0
Post-Master's Certificate	13	8	3	6	3	2
PhD	4	3	2	3	0	0
DNP	1	0	0	0	0	1
Other (please specify)						
MSN/MBA & MSN/MDIV	1	1	0	1	0	0
TOTAL	132	101	29	57	11	7

2. ENROLLMENT AND GRADUATION DATA

Table 2a. Associate Degree in Nursing Enrollment as of October 15, 2007

SCHOOLS	TE ^a	Status		Year		LPN Students
		FT ^b	PT ^c	1 st	2 nd	
Associate Degree in Nursing						
Aquinas College	216	42	174	121	95	1
Chattanooga State Technical CC	256	256	0	134	122	15
Cleveland State Community College	149	149	0	88	61	9
Columbia State Community College	300	300	0	170	130	0
Dyersburg State Community College	144	32	112	101	43	34
Freed-Hardeman University	46	43	3	28	18	0
Jackson State Community College	344	344	0	162	182	73
Lincoln Memorial University	353	254	99	167	186	16
Motlow State Community College	123	25	98	68	55	1
Northeast State Technical CC ^d	34	10	24	34	0	1
Roane State Community College	261	164	97	160	101	17
Southern Adventist University	198	182	16	105	93	2
Southwest TN Community College	210	181	29	110	100	11
Tennessee State University	224	224	0	116	108	26
Walters State Community College	282	78	204	122	160	31
TOTAL	3140	2284	856	1686	1454	237
PERCENTAGE		72.7%	27.3%	53.7%	46.3%	7.5%

^aTE=Total Enrollment

^bFT=Full-time

^cPT=Part-time

^dNew Program

Table 2b. Associate Degree in Nursing Enrollment Demographics as of October 15, 2007

SCHOOLS	TE ^a	Gender		Race						
		F ^b	M ^c	AI/AN ^d	Asian	Black	Hispanic	White	Other	NonUS ^e
Associate Degree in Nursing										
Aquinas College	216	190	26	0	8	15	0	193	0	0
Chattanooga State Technical CC	256	217	39	0	9	14	1	231	1	0
Cleveland State Community College	149	130	19	0	2	4	1	139	3	0
Columbia State Community College	300	276	24	1	2	23	3	265	6	0
Dyersburg State Community College	144	132	12	1	0	17	3	123	0	0
Freed-Hardeman University	46	37	9	0	0	1	1	44	0	0
Jackson State Community College	344	296	48	0	0	27	1	313	3	0
Lincoln Memorial University	353	324	29	0	2	8	0	322	21	0
Motlow State Community College ^f	123	109	14	0	1	7	1	112	2	1
Northeast State Technical CC ^g	34	32	2	0	1	0	1	32	0	0
Roane State Community College	261	222	39	0	6	10	0	240	5	0
Southern Adventist University	198	150	48	0	6	9	19	136	0	28
Southwest TN Community College	210	180	30	0	11	95	5	94	0	5
Tennessee State University	224	213	11	0	2	89	0	127	6	0
Walters State Community College	282	244	38	1	0	0	5	276	0	0
TOTAL	3140	2752	388	3	50	319	41	2647	47	34
PERCENTAGE		87.6%	12.4%	0.1%	1.6%	10.2%	1.3%	84.3%	1.5%	1.1%

^aTE=Total Enrollment

^bF=Female

^cM=Male

^dAI/AN=American Indian/Alaskan Native

^eNonUS=Non US Resident

^fAs reported by respondent

^gNew program

Table 2c. Associate Degree in Nursing Graduate Demographics for October 16, 2006-October 15, 2007

SCHOOLS	Total Graduates	Gender		Race							LPN Graduates
		F	M	AI/AN	Asian	Black	Hispanic	White	Other	NonUS	
Associate Degree in Nursing											
Aquinas College	95	81	14	0	0	5	0	89	0	1	3
Chattanooga State Technical CC	135	115	20	0	4	5	1	125	0	0	12
Cleveland State Community College	42	40	2	0	0	0	0	41	1	0	2
Columbia State Community College	90	83	7	0	0	4	0	85	1	0	14
Dyersburg State Community College	42	40	2	0	1	2	0	39	0	0	3
Freed-Hardeman University											
Jackson State Community College	116	102	14	0	1	6	0	99	0	0	16
Lincoln Memorial University	157	142	15	0	0	6	1	116	34	0	18
Motlow State Community College	55	51	4	0	1	3	0	49	2	0	10
Northeast State Technical CC ^a											
Roane State Community College	121	103	18	1	1	1	0	117	1	0	16
Southern Adventist University	96	73	23	0	7	8	7	64	0	10	2
Southwest TN Community College	75	67	8	0	2	22	2	48	0	1	14
Tennessee State University	94	82	12	0	0	42	0	48	4	0	20
Walters State Community College	140	127	13	2	1	0	0	137	0	0	23
TOTAL	1258	1106	152	3	18	104	11	1057	43	12	153
PERCENTAGE		87.9%	12.1%	0.2%	1.4%	8.3%	0.9%	84.0%	3.4%	1.0%	12.2%

^aNew program

Table 2d. Diploma Program/Associate Degree in Nursing Enrollment Trends
(Enrollment as of October 15th of each year)

SCHOOLS	Enrollment Trends					
	2002	2003	2004	2005	2006	2007
Diploma						
Methodist Healthcare ^a	192	216	96	16		
Total	192	216	96	16		
Associate Degree in Nursing						
Aquinas College	134	128	167	218	223	216
Chattanooga State Technical CC	232	257	259	248	256	256
Cleveland State Community College	120	114	138	158	137	149
Columbia State Community College	264	278	284	312	268	300
Dyersburg State Community College	61	98	112	118	110	144
Freed-Hardeman University					22	46
Jackson State Community College	161	203	289	289	333	344
Lincoln Memorial University	228	312	368	414	394	353
Motlow State Community College	100	105	113	129	137	123
Northeast State Technical CC ^b						34
Roane State Community College	245	224	233	231	267	261
Southern Adventist University	156	178	189	197	206	198
Southwest TN Community College	190	217	219	235	222	210
Tennessee State University	185	186	181	210	216	224
Walters State Community College	262	271	259	280	298	282
TOTAL	2338	2571	2811	3039	3089	3140
PERCENT CHANGE		9.9%	9.3%	8.1%	1.6%	1.7%
Percent of Licensed LPNs				8.0%	8.7%	7.5%

^aProgram is now closed

^bNew Program

Figure 2d. Associate Degree in Nursing Enrollment Trend Line
(Enrollment as of October 15th of each year)

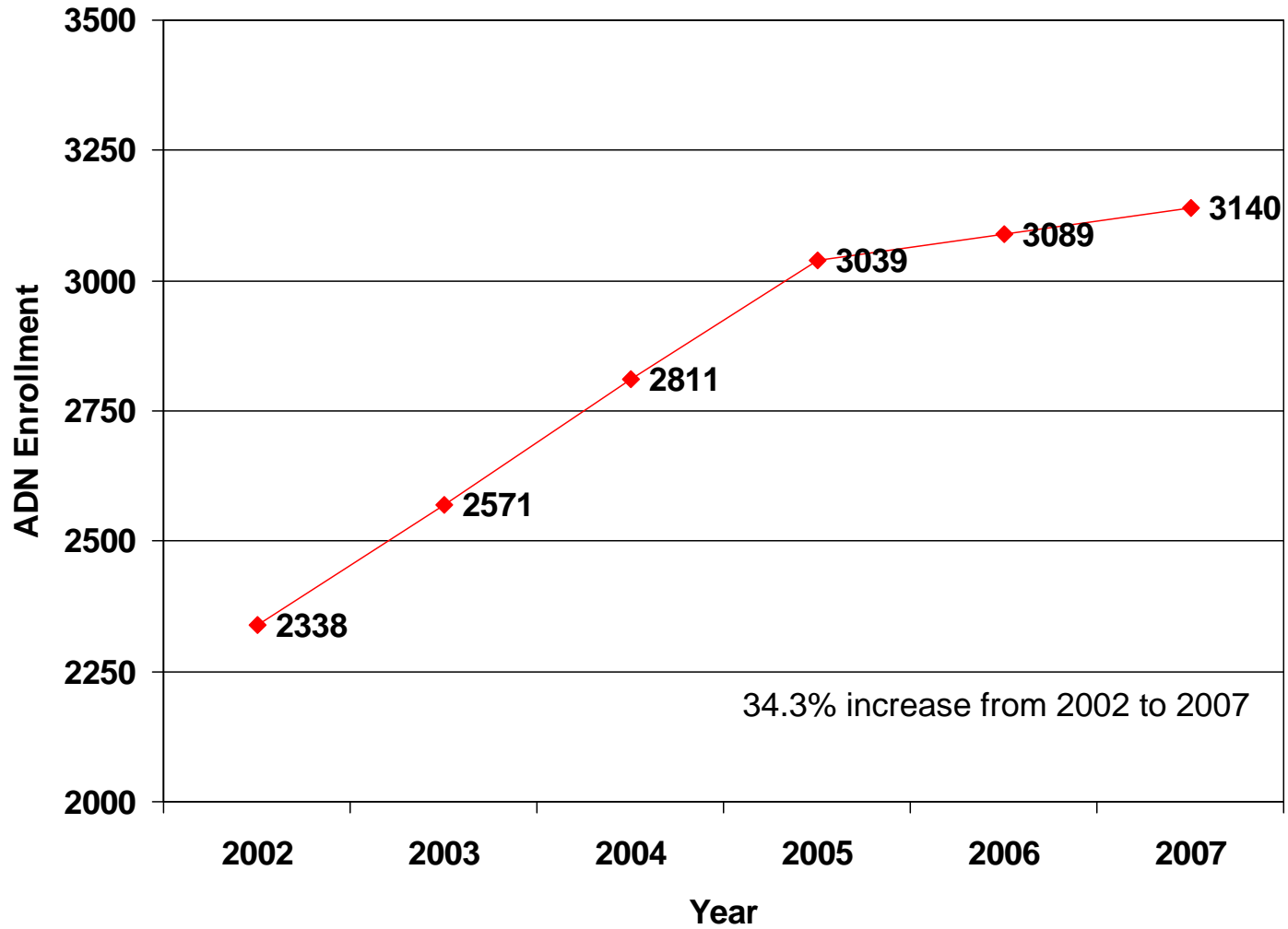


Table 2e. Diploma Program/Associate Degree in Nursing Graduation Trends

SCHOOLS	Graduation Trends			
	2003-2004	2004-2005	2005-2006	2006-2007
Diploma				
Methodist Healthcare ^a	57	73	14	
Total	57	73	14	
Associate Degree in Nursing				
Aquinas College	66	52	93	95
Chattanooga State Technical CC	127	91	86	135
Cleveland State Community College	44	48	47	42
Columbia State Community College	97	135	137	90
Dyersburg State Community College	23	58	62	42
Freed-Hardeman University ^b				
Jackson State Community College	63	84	121	116
Lincoln Memorial University	102	147	150	157
Motlow State Community College	31	38	51	55
Northeast State Technical CC ^b				
Roane State Community College	81	109	78	121
Southern Adventist University	88	79	86	96
Southwest TN Community College	88	91	86	75
Tennessee State University	66	122	65	94
Walters State Community College	120	118	131	140
TOTAL	996	1172	1193	1258
PERCENT CHANGE		17.7%	1.8%	5.4%
Percent of Licensed LPNs		13.5%	13.6%	12.2%

^aProgram is now closed

^bNew Program

Figure 2e. Associate Degree in Nursing Graduation Trend Line

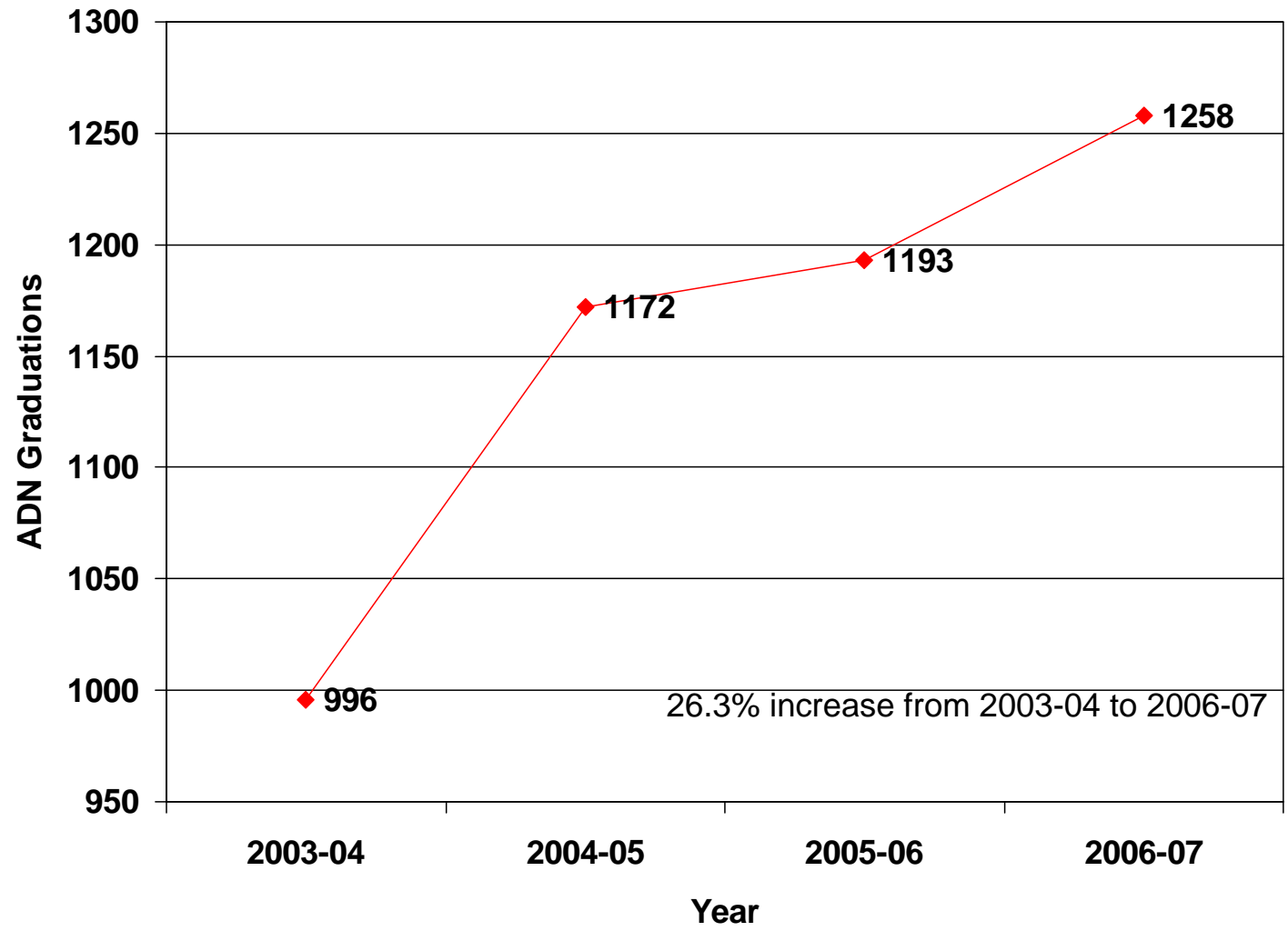


Table 2f. Bachelor of Science in Nursing Degree Enrollment as of October 15, 2007

SCHOOLS	TE	Type of BSN				Status	
		Basic	Accelerated ^a	LPN-BSN	RN-BSN	FT	PT
Bachelor of Science in Nursing Degree (Initial RN Licensure)							
Austin Peay State University	263	263	0	0		263	0
Baptist Memorial College of Health Sciences	324	316	0	8		215	109
Belmont University	326	295	31	0		311	15
Bethel College	62	61	0	1		62	0
Carson-Newman College	165	163	0	2		165	0
Cumberland University	139	104	35	0		137	2
East Tennessee State University	483	404	64	15		450	33
Fisk University	10	10	0	0		10	0
King College	96	96	0	0		96	0
Lipscomb University	71	71	0	0		68	3
Martin Methodist	20	20	0	0		20	0
Middle Tennessee State University	275	270	0	5		270	5
Milligan College	59	58	0	1		59	0
South College	51	51	0	0		51	0
Tennessee State University	110	110	0	0		110	0
Tennessee Technological University	116	116	0	0		116	0
Tennessee Wesleyan College	94	94	0	0		94	0
Trevecca Nazarene University	14	14	0	0		14	0
Union University	130	88	42	0		130	0
University of Memphis	434	428	6	0		385	49
UT Chattanooga	127	127	0	0		127	0
UT Health Science Center ^b	136	136	0	0		128	3
UT Knoxville	230	230	0	0		219	11
UT Martin	119	119	0	0		117	2
Subtotal	3854	3644	178	32		3617	232
(continued)							

(continued)							
SCHOOLS	TE	Type of BSN				Status	
		Basic	Accelerated^a	LPN-BSN	RN-BSN	FT	PT
Bachelor of Science in Nursing Degree (RN-BSN)							
Aquinas College ^c	18				18	0	18
Austin Peay State University	20				20	0	20
Baptist Memorial College of Health Sciences	13				13	7	6
Belmont University	11				11	1	10
Carson-Newman College	0				0	0	0
Cumberland University	2				2	2	0
East Tennessee State University	103				103	41	62
King College	216				216	216	0
Lincoln Memorial University ^c	44				44	31	13
Middle Tennessee State University	122				122	0	122
Southern Adventist University ^c	78				78	47	31
Tennessee State University	2				2	2	0
Tennessee Technological University	8				8	1	7
Tennessee Wesleyan College	5				5	0	5
Union University	131				131	0	131
University of Memphis ^b	33				33	7	16
University of Phoenix ^c	10				10	10	0
UT Chattanooga	35				35	0	35
UT Health Science Center ^b	2				2	5	2
UT Knoxville	17				17	0	17
UT Martin	49				49	14	35
Subtotal	919				919	384	530
TOTAL	4773	3644	178	32	919	4001	762
PERCENTAGE		76.3%	3.7%	0.7%	19.3%	83.8%	16.0%

^aAccelerated 2nd Degree BSN

^bAs reported by respondent

^cOffers Baccalaureate Degree program for RNs only

Table 2g. Bachelor of Science in Nursing Degree Enrollment Demographics as of October 15, 2007

SCHOOLS	TE	Gender		Race						
		F	M	AI/AN	Asian	Black	Hispanic	White	Other	NonUS
Bachelor of Science in Nursing Degree (Initial RN Licensure)										
Austin Peay State University	263	233	30	4	15	28	15	199	1	1
Baptist Memorial College of Health Sciences	324	302	22	1	8	106	1	195	13	0
Belmont University	326	302	24	2	5	15	2	286	12	4
Bethel College	62	58	4	0	0	7	2	50	0	3
Carson-Newman College	165	150	15	0	5	5	3	151	0	1
Cumberland University	139	120	19	1	1	6	2	124	5	0
East Tennessee State University	483	418	65	0	7	15	5	444	12	0
Fisk University	10	10	0	0	0	8	0	0	0	2
King College	96	86	10	0	1	0	0	90	2	3
Lipscomb University	71	64	7	0	0	3	1	62	0	5
Martin Methodist	20	17	3	1	0	0	0	19	0	0
Middle Tennessee State University	275	237	38	2	4	13	3	253	0	0
Milligan College	59	54	5	1	0	2	0	55	0	1
South College	51	47	4	0	0	3	0	48	0	0
Tennessee State University	110	90	20	0	1	68	1	20	20	0
Tennessee Technological University	116	105	11	0	0	1	0	113	2	0
Tennessee Wesleyan College	94	84	10	0	0	2	1	89	2	0
Trevecca Nazarene University	14	14	0	0	0	2	1	11	0	0
Union University	130	103	27	0	4	18	1	106	1	0
University of Memphis	434	393	41	1	14	122	6	288	3	0
UT Chattanooga	127	107	20	0	2	6	2	117	0	0
UT Health Science Center ^a	136	122	9	0	2	21	1	107	0	0
UT Knoxville	230	208	22	0	5	13	6	200	0	6
UT Martin	119	105	14	0	1	2	1	115	0	0
Subtotal	3854	3429	420	13	75	466	54	3142	73	26
(continued)										

(continued)										
SCHOOLS	TE	Gender		Race						
		F	M	AI/AN	Asian	Black	Hispanic	White	Other	NonUS
Bachelor of Science in Nursing Degree (RN-BSN)										
Aquinas College ^b	18	18	0	0	1	5	0	12	0	0
Austin Peay State University	20	18	2	1	0	2	0	17	0	0
Baptist Memorial College of Health Sciences	13	11	2	0	0	3	0	9	1	0
Belmont University	11	10	1	0	1	2	0	8	0	0
Carson-Newman College	0	0	0	0	0	0	0	0	0	0
Cumberland University	2	2	0	0	0	0	0	2	0	0
East Tennessee State University	103	93	10	0	0	3	1	95	4	0
King College	216	198	18	0	0	0	0	216	0	0
Lincoln Memorial University ^b	44	39	5	0	0	1	0	42	1	0
Middle Tennessee State University	122	105	17	0	3	0	1	118	0	0
Southern Adventist University ^b	78	57	21	2	4	8	6	52	0	6
Tennessee State University	2	2	0	0	0	0	0	2	0	0
Tennessee Technological University	8	7	1	0	0	0	0	8	0	0
Tennessee Wesleyan College	5	4	1	0	0	0	0	5	0	0
Union University	131	121	10	0	2	40	1	81	7	0
University of Memphis	33	30	3	0	0	6	0	25	2	0
University of Phoenix ^b	10	9	1	0	0	2	1	7	0	0
UT Chattanooga	35	26	9	0	1	2	0	32	0	0
UT Health Science Center ^a	2	4	3	0	0	3	0	4	0	0
UT Knoxville	17	14	3	0	0	1	0	16	0	0
UT Martin	49	46	3	0	0	3	1	45	0	0
Subtotal	919	814	110	3	12	81	11	796	15	6
TOTAL	4773	4243	530	16	87	547	65	3938	88	32
PERCENTAGE		88.9%	11.1%	0.3%	1.8%	11.5%	1.4%	82.5%	1.8%	0.7%

^aAs reported by respondent

^bOffers Baccalaureate Degree program for RNs only

Table 2h. Bachelor of Science in Nursing Degree Graduate Demographics from October 16, 2006-October 15, 2007

SCHOOLS	Total Graduates	Gender		Race						
		F	M	AI/AN	Asian	Black	Hispanic	White	Other	NonUS
Bachelor of Science in Nursing Degree (Initial RN Licensure)										
Austin Peay State University	55	50	5	2	2	6	2	43	0	0
Baptist Memorial College of Health Sciences	111	97	14	0	1	41	0	66	3	0
Belmont University	67	60	7	1	1	2	0	60	3	0
Bethel College	14	13	1	0	0	3	0	11	0	0
Carson-Newman College	53	45	8	0	0	1	0	52	0	0
Cumberland University	70	60	10	0	0	2	1	58	9	0
East Tennessee State University	138	115	23	0	2	0	2	133	1	0
Fisk University ^a										
King College	47	43	4	0	0	1	0	46	0	0
Lipscomb University	29	27	2	0	1	1	0	26	0	1
Martin Methodist ^a										
Middle Tennessee State University	91	87	4	0	1	3	1	86	0	0
Milligan College	22	20	2	0	0	2	0	20	0	0
South College	20	19	1	0	0	1	0	19	0	0
Tennessee State University	39	36	3	0	2	20	0	11	6	0
Tennessee Technological University	43	41	2	1	0	2	0	39	1	0
Tennessee Wesleyan College	39	35	4	0	0	1	0	38	0	0
Trevecca Nazarene University ^a										
Union University	89	69	20	0	4	9	0	75	1	0
University of Memphis	130	116	14	2	1	24	1	102	0	0
UT Chattanooga	51	46	5	0	2	4	0	45	0	0
UT Health Science Center	31	28	3	0	1	7	0	23	0	0
UT Knoxville	99	85	14	1	0	3	2	91	0	2
UT Martin	25	24	1	0	0	2	0	22	0	1
Subtotal	1263	1116	147	7	18	135	9	1066	24	4
(continued)										

(continued)										
SCHOOLS	Total Graduates	Gender		Race						
		F	M	AI/AN	Asian	Black	Hispanic	White	Other	NonUS
Bachelor of Science in Nursing Degree (RN-BSN)										
Aquinas College ^{b,c}	5									
Austin Peay State University	7	5	2	0	0	1	0	6	0	0
Baptist Memorial College of Health Sciences	12	12	0	0	0	3	0	9	0	0
Belmont University	1	1	0	0	0	0	0	1	0	0
Carson-Newman College	4	4	0	0	0	0	0	4	0	0
Cumberland University	0									
East Tennessee State University	29	25	4	0	0	0	0	28	1	0
King College	85	74	11	0	0	0	0	85	0	0
Lincoln Memorial University ^b	17	14	3	0	0	1	0	13	3	0
Middle Tennessee State University	68	60	8	0	1	0	1	65	1	0
Southern Adventist University ^b	58	46	12	1	1	1	3	50	0	2
Tennessee State University ^c	10	8	2	0	0	6	0	6	3	0
Tennessee Technological University	4	4	0	0	0	0	0	4	0	0
Tennessee Wesleyan College	6	5	1	0	0	1	0	5	0	0
Union University	45	42	3	0	1	20	0	24	0	0
University of Memphis	22	19	3	0	0	5	0	16	1	0
University of Phoenix ^{a,b}										
UT Chattanooga	2	0	2	0	0	0	0	2	0	0
UT Health Science Center	24	21	3	0	13	11	0	0	0	0
UT Knoxville	11	10	1	0	1	0	0	10	0	0
UT Martin	18	16	2	0	0	1	0	17	0	0
Subtotal	428	366	57	1	17	50	4	345	9	2
TOTAL	1691	1482	204	8	35	185	13	1411	33	6
PERCENTAGE		87.6%	12.1%	0.5%	2.1%	10.9%	0.8%	83.4%	1.9%	0.4%

^aNew Program

^bOffers Baccalaureate Degree program for RNs only

^cAs reported by respondent

Table 2i. Bachelor of Science in Nursing Degree Enrollment (as of October 15th of Each Year) Trends

SCHOOLS	Enrollment Trends			
	2004	2005	2006	2007
Bachelor of Science in Nursing Degree (Initial RN Licensure)				
Austin Peay State University	164	215	205	263
Baptist Memorial College of Health Sciences	582	632	591	324
Belmont University	242	255	269	326
Bethel College			61	62
Carson-Newman College	54	105	135	165
Cumberland University	203	162	153	139
East Tennessee State University	343	422	413	483
Fisk University			6	10
King College	82	133	123	96
Lipscomb University		30	66	71
Martin Methodist			10	20
Middle Tennessee State University	212	209	238	275
Milligan College	64	38	55	59
South College	18	41	46	51
Tennessee State University	80	104	102	110
Tennessee Technological University	96	99	96	116
Tennessee Wesleyan College	81	89	90	94
Trevecca Nazarene University			4	14
Union University	122	110	126	130
University of Memphis	314	363	410	434
UT Chattanooga	133	143	132	127
UT Health Science Center	0	42	101	136
UT Knoxville	229	230	229	230
UT Martin	134	117	125	119
Subtotal	3153	3539	3786	3854
Subtotal Percent Change		12.2%	7.0%	1.8%
(continued)				

(continued)				
SCHOOLS	Enrollment Trends			
	2004	2005	2006	2007
Bachelor of Science in Nursing Degree (RN-BSN)				
Aquinas College	21	19	13	18
Austin Peay State University	3	12	15	20
Baptist Memorial College of Health Sciences	40	23	14	13
Belmont University	5	6	6	11
Carson-Newman College	3	2	3	0
Cumberland University	1	0	0	2
East Tennessee State University	90	83	77	103
King College	42	87	163	216
Lincoln Memorial University	19	24	28	44
Middle Tennessee State University	99	121	157	122
Southern Adventist University	88	65	66	78
Tennessee State University	8	20	7	2
Tennessee Technological University	1	0	7	8
Tennessee Wesleyan College	3	3	9	5
Union University	141	162	159	131
University of Memphis	34	35	31	33
University of Phoenix		5	11	10
UT Chattanooga	11	14	25	35
UT Health Science Center		29	4	2
UT Knoxville	20	21	13	17
UT Martin	42	15	40	49
Subtotal	671	746	848	919
Subtotal Percent Change		11.2%	13.7%	8.4%
TOTAL	3824	4285	4634	4773
TOTAL PERCENT CHANGE		12.0%	8.1%	3.0%

Figure 2i. Bachelor of Science in Nursing Degree Enrollment Trend Line
(Enrollment as of October 15th of Each Year)

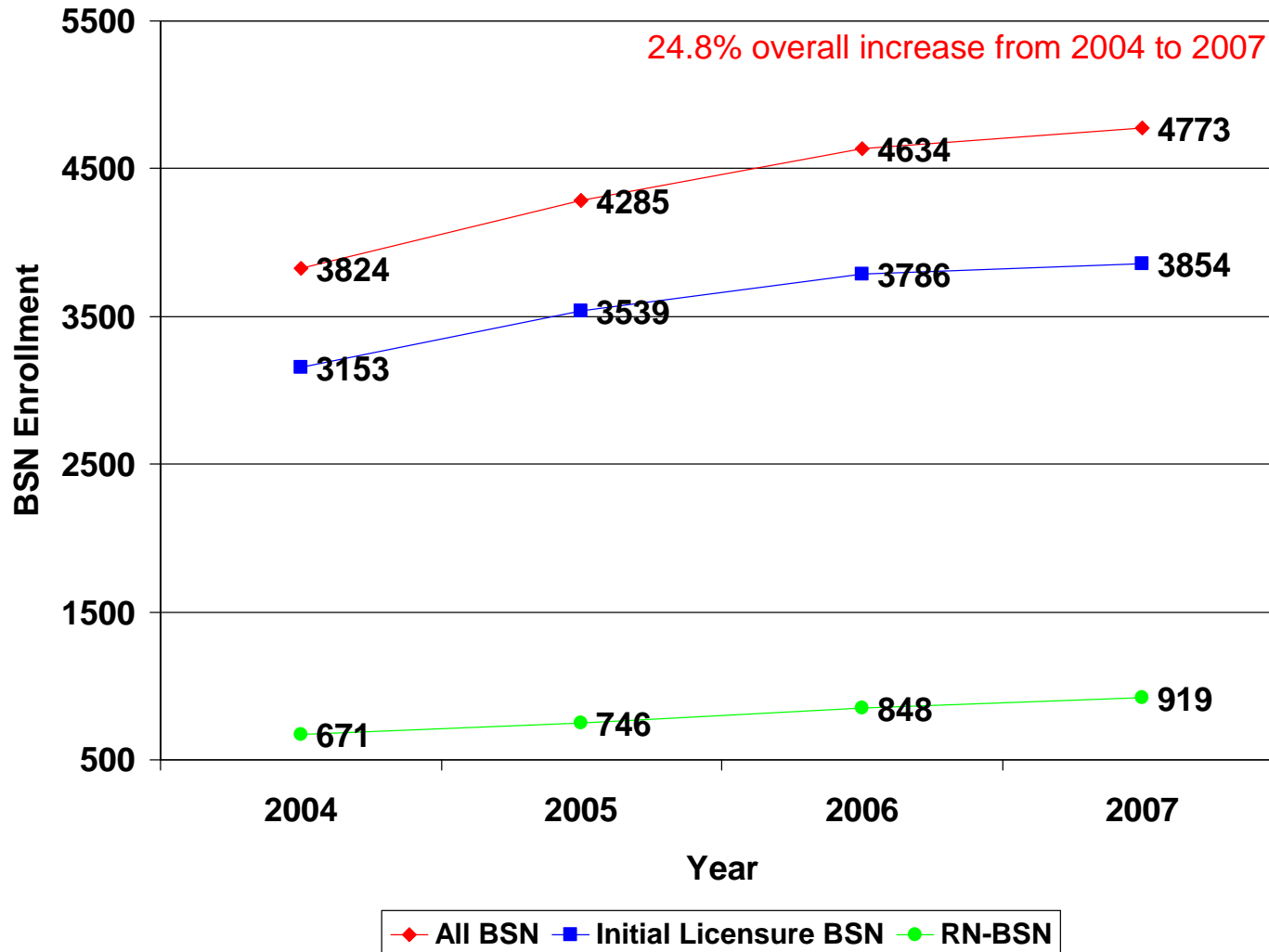


Table 2j. Bachelor of Science in Nursing Degree Graduation Trends

SCHOOLS	Graduation Trends			
	2003-2004	2004-2005	2005-2006	2006-2007
Bachelor of Science in Nursing Degree (Initial RN Licensure)				
Austin Peay State University	57	64	85	55
Baptist Memorial College of Health Sciences	60	102	145	111
Belmont University	33	68	79	67
Bethel College				14
Carson-Newman College	16	24	32	53
Cumberland University	23	47	70	70
East Tennessee State University	87	117	142	138
Fisk University				
King College	10	16	24	47
Lipscomb University				29
Martin Methodist				
Middle Tennessee State University	63	76	86	91
Milligan College	11	6	9	22
South College	0	0	18	20
Tennessee State University	32	29	29	39
Tennessee Technological University	42	42	51	43
Tennessee Wesleyan College	34	28	39	39
Trevecca Nazarene University				
Union University	23	82	78	89
University of Memphis	76	76	122	130
UT Chattanooga	51	45	54	51
UT Health Science Center				31
UT Knoxville	107	106	105	99
UT Martin	31	33	39	25
Subtotal	756	961	1207	1263
Subtotal Percent Change		27.1%	25.6%	4.6%
(continued)				

(continued)				
SCHOOLS	Graduation Trends			
	2003-2004	2004-2005	2005-2006	2006-2007
Bachelor of Science in Nursing Degree (RN-BSN)				
Aquinas College	5	6	5	5
Austin Peay State University			3	7
Baptist Memorial College of Health Sciences	23	26	12	12
Belmont University	3	5	3	1
Carson-Newman College		2	1	4
Cumberland University	1	0	0	0
East Tennessee State University	29	39	37	29
King College	23	25	14	85
Lincoln Memorial University	7	10	5	17
Middle Tennessee State University	35	40	66	68
Southern Adventist University	49	49	38	58
Tennessee State University	7	0	6	10
Tennessee Technological University	1	1	0	4
Tennessee Wesleyan College	5	1	2	6
Union University	33	50	52	45
University of Memphis	15	15	22	22
University of Phoenix				
UT Chattanooga	7	5	3	2
UT Health Science Center				24
UT Knoxville	12	9	14	11
UT Martin	10	20	19	18
Subtotal	265	303	302	428
Subtotal Percent Change		14.3%	(0.3%)	41.7%
TOTAL	1021	1264	1509	1691
TOTAL PERCENT CHANGE		23.8%	19.4%	12.1%

Figure 2j. Bachelor of Science in Nursing Degree Graduation Trend Line

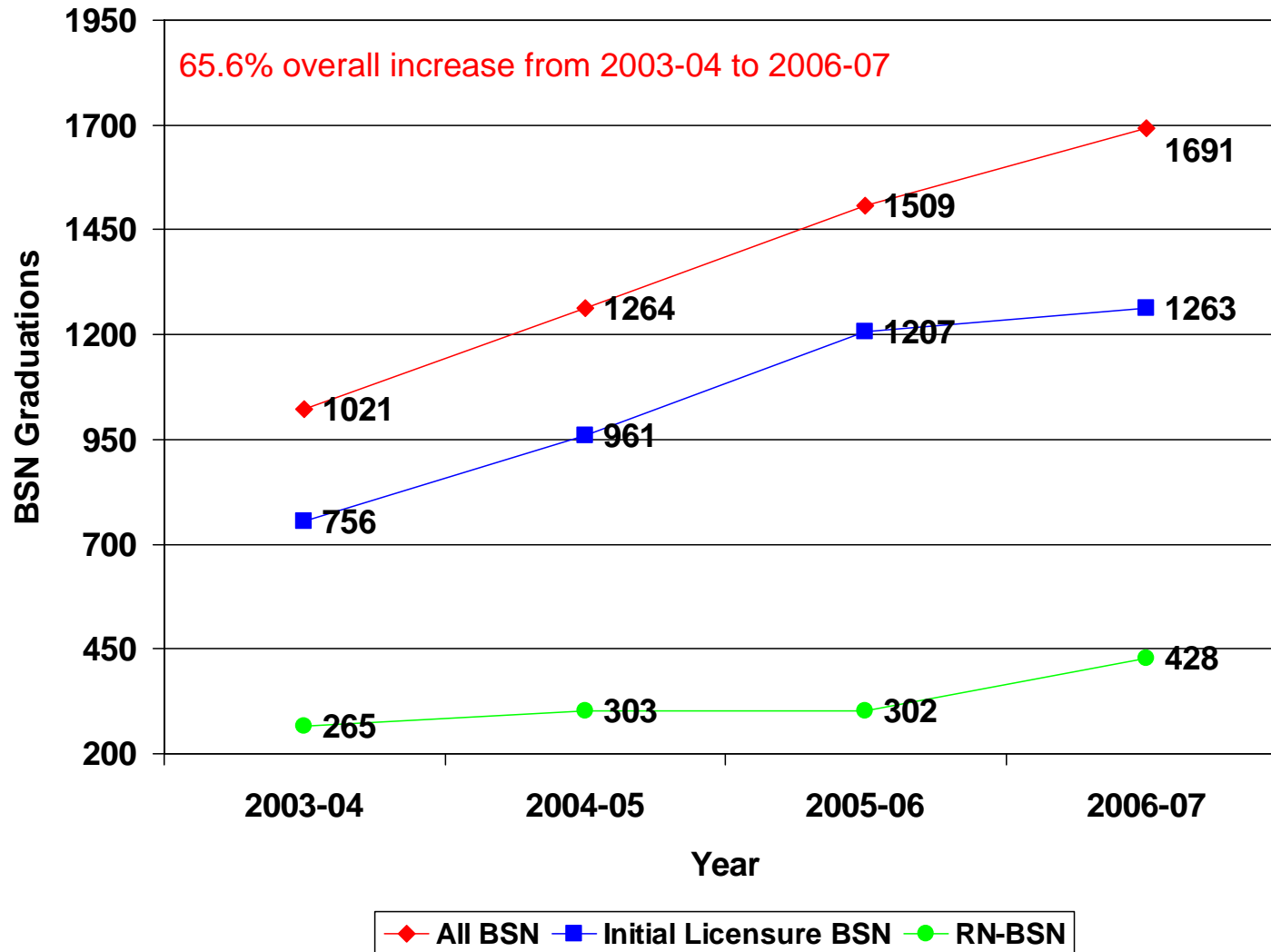


Table 2k. Master of Science in Nursing/Master of Science Degree Enrollment as of October 15, 2007

SCHOOLS	TE	Status	
		FT	PT
Master of Science in Nursing/Master of Science Degree			
Austin Peay State University ^a	62	56	6
Belmont University	23	6	17
Carson-Newman College	35	11	24
East Tennessee State University	133	59	74
King College	35	0	35
Lincoln Memorial University	17	3	14
Middle Tennessee School of Anesthesia	210	210	0
Middle Tennessee State University ^a	77	77	0
Southern Adventist University	60	38	22
Tennessee State University	133	115	18
Tennessee Technological University ^a	26	19	7
Union University	92	0	92
University of Memphis	156	17	139
UT Chattanooga	91	42	49
UT Health Science Center	101	0	101
UT Knoxville ^b	103	48	62
Vanderbilt University	320	180	140
Subtotal	1674	881	800
Master of Science in Nursing Degree for Initial RN Licensure			
UT Knoxville	40	38	2
Vanderbilt University	269	218	51
Subtotal	309	256	53
TOTAL	1983	1137	853
PERCENTAGE		57.3%	43.0%

^aRegents Online Degree Program (RODP) only

^bAs reported by respondent

Table 21. Master of Science in Nursing/Master of Science Degree Enrollment Demographics as of October 15, 2007

SCHOOLS	TE	Gender		Race						
		F	M	AI/AN	Asian	Black	Hispanic	White	Other	NonUS
Master's Degree										
Austin Peay State University	62	60	2	0	3	6	2	51	0	0
Belmont University	23	23	0	0	0	0	0	23	0	0
Carson-Newman College	35	31	4	0	0	1	0	34	0	0
East Tennessee State University	133	121	12	0	0	5	1	123	4	0
King College	35	32	3	0	0	0	0	35	0	0
Lincoln Memorial University	17	15	2	0	0	2	0	15	0	0
Middle Tennessee School of Anesthesia	210	117	93	3	5	6	2	194	0	0
Middle Tennessee State University	77	71	6	0	1	0	1	75	0	0
Southern Adventist University	60	52	8	0	1	0	2	56	0	1
Tennessee State University	133	129	4	0	3	52	4	74	0	0
Tennessee Technological University	26	25	1	0	0	2	0	24	0	0
Union University	92	71	21	0	2	12	1	77	0	0
University of Memphis	156	147	9	1	2	41	0	112	0	0
UT Chattanooga	91	75	16	0	2	3	2	84	0	0
UT Health Science Center	101	80	21	0	2	24	4	71	0	0
UT Knoxville ^a	103	95	15	0	1	0	0	106	0	3
Vanderbilt University	320	283	37	1	3	12	2	293	4	5
Subtotal	1674	1427	254	5	25	166	21	1447	8	9
Master's for Initial RN Licensure										
UT Knoxville	40	36	4	0	3	1	0	30	0	6
Vanderbilt University	269	243	26	1	5	26	6	220	5	6
Subtotal	309	279	30	1	8	27	6	250	5	12
TOTAL	1983	1706	284	6	33	193	27	1697	13	21
PERCENTAGE		86.0%	14.3%	0.3%	1.7%	9.7%	1.4%	85.6%	0.7%	1.1%

^aAs reported by respondent

Table 2m. Master of Science in Nursing/Master of Science Degree Graduate Demographics from October 16, 2006-October 15, 2007

SCHOOLS	Total Graduates	Gender		Race						
		F	M	AI/AN	Asian	Black	Hispanic	White	Other	NonUS
Master's Degree										
Austin Peay State University	3	3	0	0	0	1	0	2	0	0
Belmont University	4	3	1	0	0	1	0	3	0	0
Carson-Newman College	10	9	1	0	0	0	0	10	0	0
East Tennessee State University	35	32	3	0	1	0	0	33	1	0
King College ^b										
Lincoln Memorial University ^b										
Middle Tennessee School of Anesthesia	47	22	25	2	3	0	0	42	0	0
Middle Tennessee State University	9	3	6	0	0	0	0	8	1	0
Southern Adventist University	14	13	1	0	0	1	0	13	0	0
Tennessee State University	17	16	1	0	1	6	4	6	0	0
Tennessee Technological University	1	1	0	0	0	0	0	1	0	0
Union University	14	13	1	0	0	4	0	10	0	0
University of Memphis	34	31	3	0	0	8	0	26	0	0
UT Chattanooga	28	23	5	0	1	0	1	26	0	0
UT Health Science Center	49	40	9	0	0	8	0	41	0	0
UT Knoxville ^a	40	35	5	0	0	0	0	42	0	0
Vanderbilt University ^a	152	142	10	0	1	4	4	113	7	1
Subtotal	457	386	71	2	7	33	9	376	9	1
Master's for Initial RN Licensure										
UT Knoxville	17	12	5	0	0	0	0	16	0	1
Vanderbilt University ^a	117	106	11	1	1	9	4	116	8	0
Subtotal	134	118	16	1	1	9	4	132	8	1
TOTAL	591	504	87	3	8	42	13	508	17	2
PERCENTAGE		85.3%	14.7%	0.5%	1.4%	7.1%	2.2%	86.0%	2.9%	0.3%

^aAs reported by respondent

^bNew program

Table 2n. Master of Science in Nursing/Master of Science Degree Enrollment Trends

SCHOOLS	Enrollment Trends					
	2002	2003	2004	2005	2006	2007
Master of Science in Nursing/Master of Science Degree						
Austin Peay State University			6	40	31	62
Belmont University	8	11	7	12	13	23
Carson-Newman College	14	15	23	28	31	35
East Tennessee State University	95	89	91	101	104	133
King College ^a					15	35
Lincoln Memorial University ^a					10	17
Middle Tennessee School of Anesthesia						210
Middle Tennessee State University			26	38	54	77
Southern Adventist University	18	31	61	56	60	60
Tennessee State University	18	15	30	45	103	133
Tennessee Technological University			5	19	27	26
Union University	44	39	31	21	55	92
University of Memphis			92	116	124	156
UT Chattanooga	57	54	73	84	99	91
UT Health Science Center		80	91	102	109	101
UT Knoxville	72	76	82	93	95	103
Vanderbilt University	141	134	156	190	255	320
Subtotal	467	544	774	945	1185	1674
Subtotal Percent Change		16.5%	42.3%	22.1%	25.4%	41.3%
Master of Science in Nursing Degree for Initial RN Licensure						
UT Knoxville	43	45	46	51	44	40
Vanderbilt University	274	312	322	321	299	269
Subtotal	317	357	368	372	343	309
Subtotal Percent Change		12.6%	3.1%	1.1%	(7.8%)	(9.9%)
TOTAL	784	901	1142	1317	1528	1983
TOTAL PERCENT CHANGE		14.9%	26.7%	15.3%	16.0%	29.8%

^aNew Program

Figure 2n. Master of Science in Nursing/Master of Science Degree Enrollment Trend Line
(Enrollment as of October 15th of Each Year)

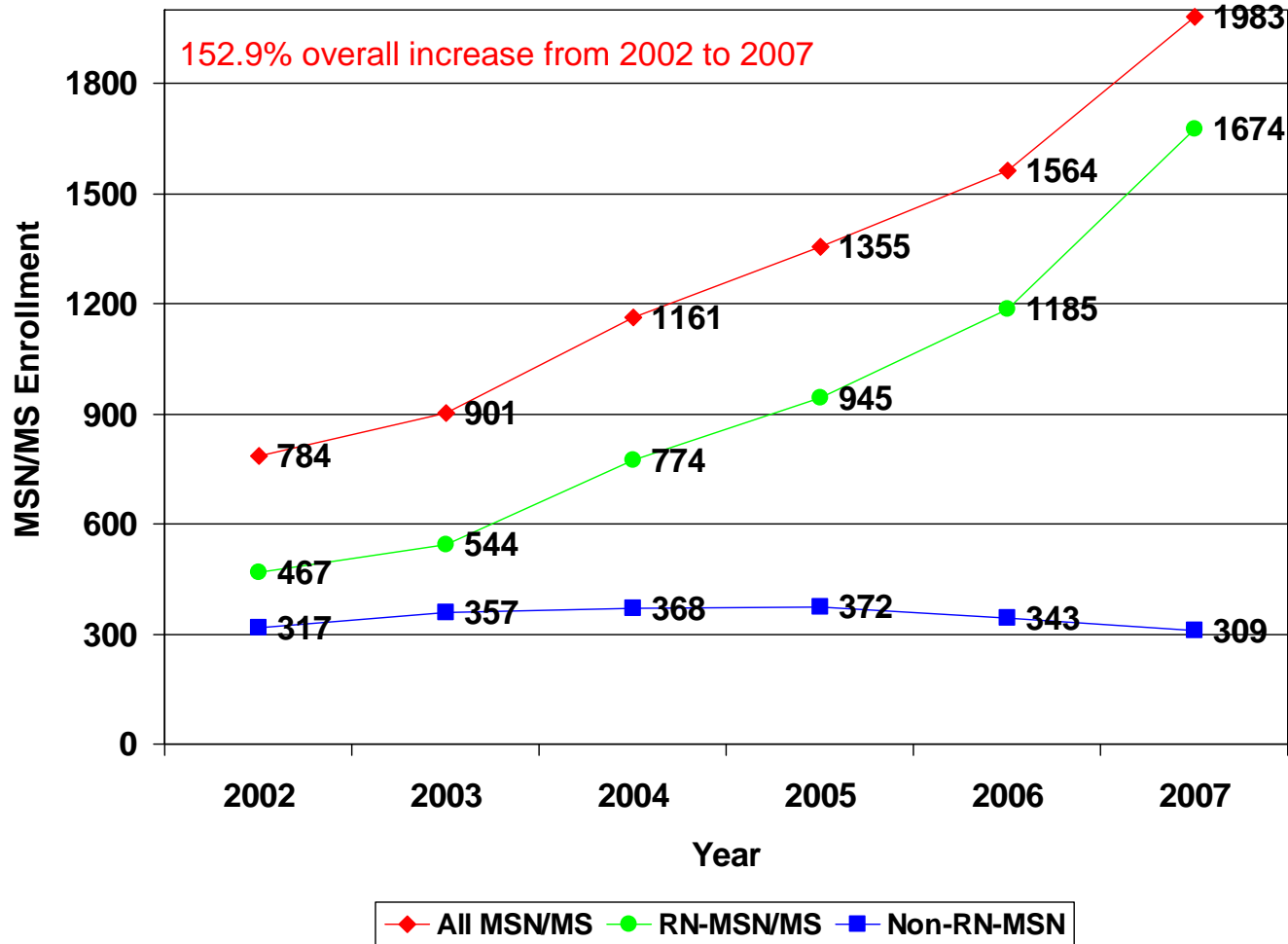


Table 2o. Master of Science in Nursing/Master of Science Degree Graduation Trends

SCHOOLS	Graduation Trends			
	2003-2004	2004-2005	2005-2006	2006-2007
Master of Science in Nursing/Master of Science Degree				
Austin Peay State University			1	3
Belmont University	5	3	3	4
Carson-Newman College	7	5	10	10
East Tennessee State University	30	39	31	35
King College ^a				
Lincoln Memorial University ^a				
Middle Tennessee School of Anesthesia				47
Middle Tennessee State University			5	9
Southern Adventist University	3	17	19	14
Tennessee State University	6	9	9	17
Tennessee Technological University				1
Union University	20	20	14	14
University of Memphis		24	48	34
UT Chattanooga	17	32	27	28
UT Health Science Center	31	34	31	49
UT Knoxville	30	38	45	40
Vanderbilt University	106	123	102	152
Subtotal	255	344	345	457
Subtotal Percent Change		34.9%	0.3%	32.5%
Master of Science in Nursing Degree for Initial RN Licensure				
UT Knoxville	15	10	19	17
Vanderbilt University	125	135	135	117
Subtotal	140	145	154	134
Subtotal Percent Change		3.6%	6.2%	(13.0%)
TOTAL	395	489	499	591
TOTAL PERCENT CHANGE		23.8%	2.0%	18.4%

^aNew Program

Figure 2o. Master of Science in Nursing/Master of Science Degree Graduation Trend Line

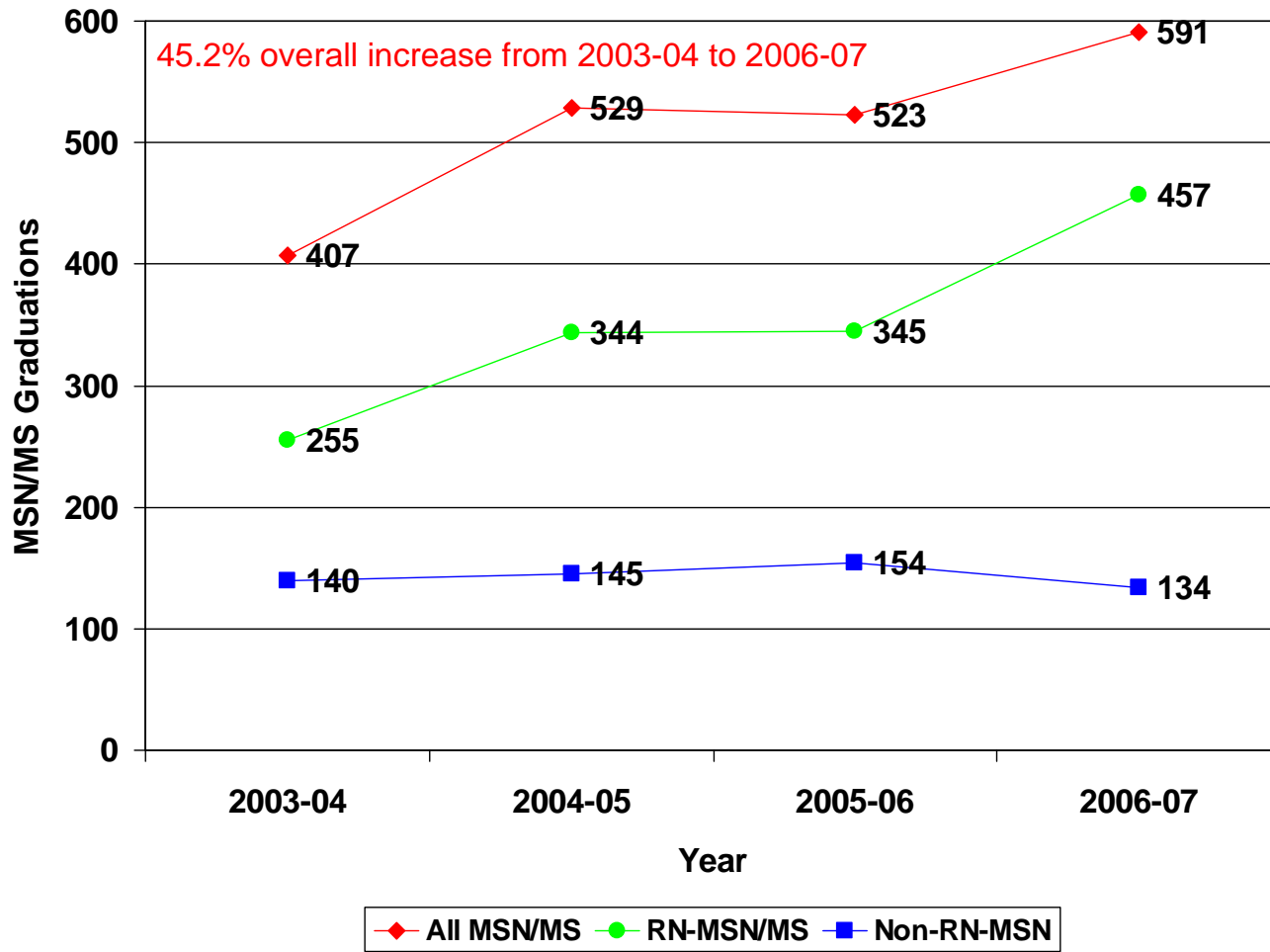


Table 2p. Post-Master's Certificate Enrollment Demographics as of October 15, 2007

SCHOOLS	TE	Gender		Race						
		F	M	AI/AN	Asian	Black	Hispanic	White	Other	NonUS
Post-Master's Certificate										
Austin Peay State University	3	3	0	0	0	0	0	3	0	0
Belmont University	1	1	0	0	0	0	0	1	0	0
Carson-Newman College	0	0	0	0	0	0	0	0	0	0
East Tennessee State University	2	2	0	0	0	0	1	1	0	0
Middle Tennessee State University	1	1	0	0	0	0	0	1	0	0
Southern Adventist University	2	2	0	0	1	0	0	1	0	0
Tennessee State University	3	3	0	0	0	3	0	0	0	0
Union University	4	4	0	0	0	1	0	3	0	0
University of Memphis	2	2	0	0	0	1	0	1	0	0
UT Chattanooga	6	4	2	0	0	0	0	6	0	0
UT Health Science Center	4	3	1	0	0	0	1	3	0	0
UT Knoxville	7	7	0	0	0	0	0	7	0	0
Vanderbilt University	18	16	2	0	1	2	0	15	0	0
TOTAL	53	48	5	0	2	7	2	42	0	0
PERCENTAGE		90.6%	9.4%	0.0%	3.8%	13.2%	3.8%	79.2%	0.0%	0.0%

Table 2q. Post-Master's Certificate Graduate Demographics from October 16, 2006-October 15, 2007

SCHOOLS	Total Graduates	Gender		Race						
		F	M	AI/AN	Asian	Black	Hispanic	White	Other	NonUS
Post-Master's Certificate										
Austin Peay State University ^a										
Belmont University	1	1	0	0	0	0	0	1	0	0
Carson-Newman College	0	0	0	0	0	0	0	0	0	0
East Tennessee State University	1	1	0	0	1	0	0	0	0	0
Middle Tennessee State University ^a										
Southern Adventist University	0	0	0	0	0	0	0	0	0	0
Tennessee State University	1	1	0	0	0	1	0	0	0	0
Union University	1	1	0	0	0	0	0	1	0	0
University of Memphis ^a										
UT Chattanooga	2	2	0	0	0	0	0	2	0	0
UT Health Science Center	0	0	0	0	0	0	0	0	0	0
UT Knoxville	1	1	0	0	0	0	0	1	0	0
Vanderbilt University	8	8	0	0	0	0	0	8	0	0
TOTAL	15	15	0	0	1	1	0	13	0	0
PERCENTAGE		100.0%	0.0%	0.0%	6.7%	6.7%	0.0%	86.7%	0.0%	0.0%

^aNew program

Table 2r. Post-Master's Certificate Enrollment Trends

SCHOOLS	Enrollment Trends			
	2004	2005	2006	2007
Post-Master's Certificate				
Austin Peay State University ^a				3
Belmont University	1	1	1	1
Carson-Newman College	1	2	0	0
East Tennessee State University	2	3	2	2
Middle Tennessee State University ^a				1
Southern Adventist University			1	2
Tennessee State University			2	3
Union University			2	4
University of Memphis ^a				2
UT Chattanooga	5	5	5	6
UT Health Science Center	5	6	2	4
UT Knoxville	5	5	7	7
Vanderbilt University		16	14	18
TOTAL	19	38	36	53
PERCENT CHANGE		100%	(5.3%)	47.2%

^aNew Program

Figure 2r. Post-Master's Enrollment Trend Line
(Enrollment as of October 15th of Each Year)

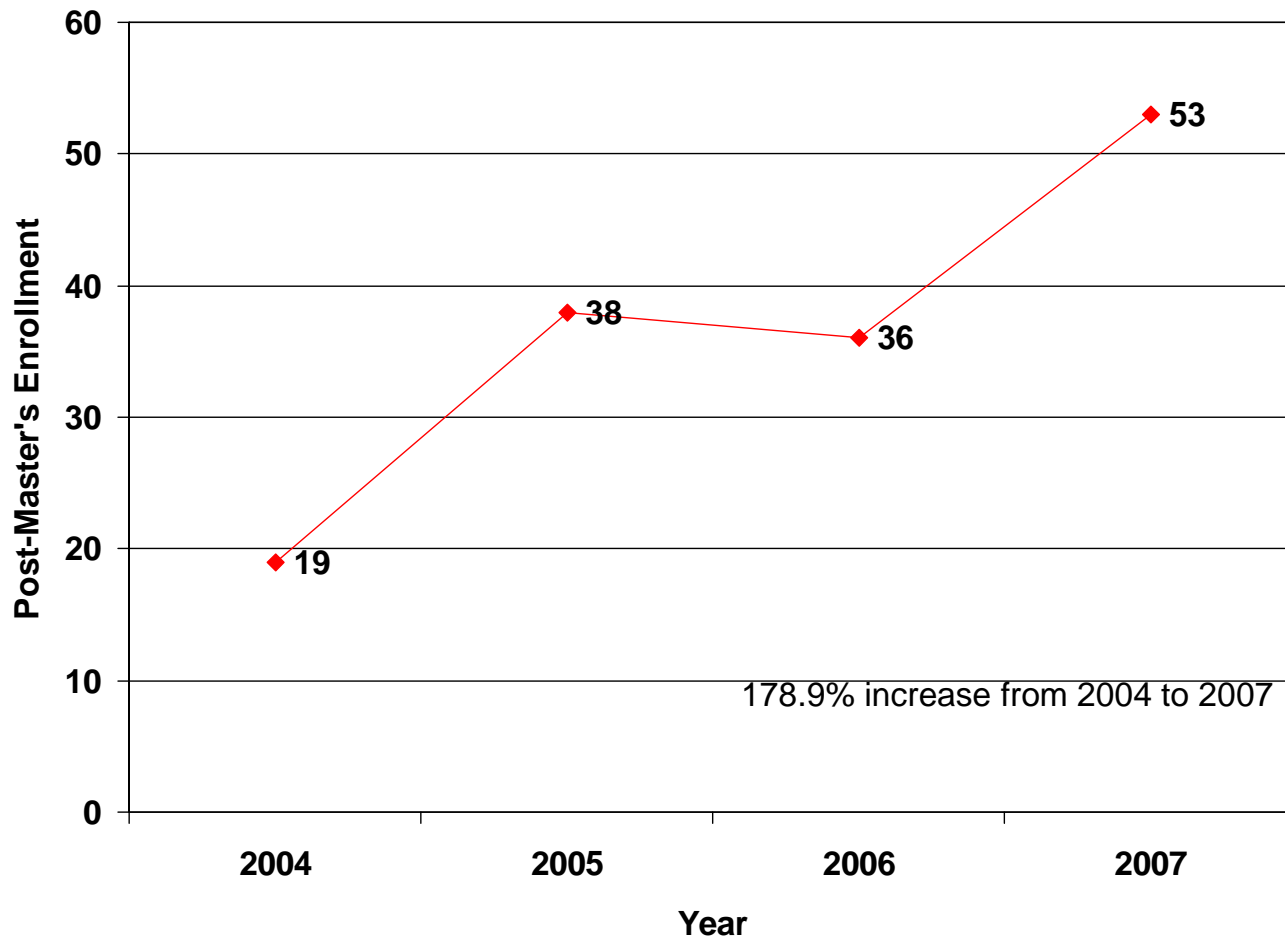


Table 2s. Post-Master's Certificate Graduation Trends

SCHOOLS	Graduation Trends			
	2003-2004	2004-2005	2005-2006	2006-2007
Post-Master's Certificate				
Austin Peay State University ^a				
Belmont University		1	1	1
Carson-Newman College	1	0	1	0
East Tennessee State University			1	1
Middle Tennessee State University ^a				
Southern Adventist University				0
Tennessee State University				1
Union University				1
University of Memphis ^a				
UT Chattanooga	4	17	1	2
UT Health Science Center		5	3	0
UT Knoxville	7	3	4	1
Vanderbilt University		14	13	8
TOTAL	12	40	24	15
PERCENT CHANGE		233%	(40.0%)	(37.5%)

^aNew Program

Figure 2s. Post-Master's Certificate Graduation Trend Line

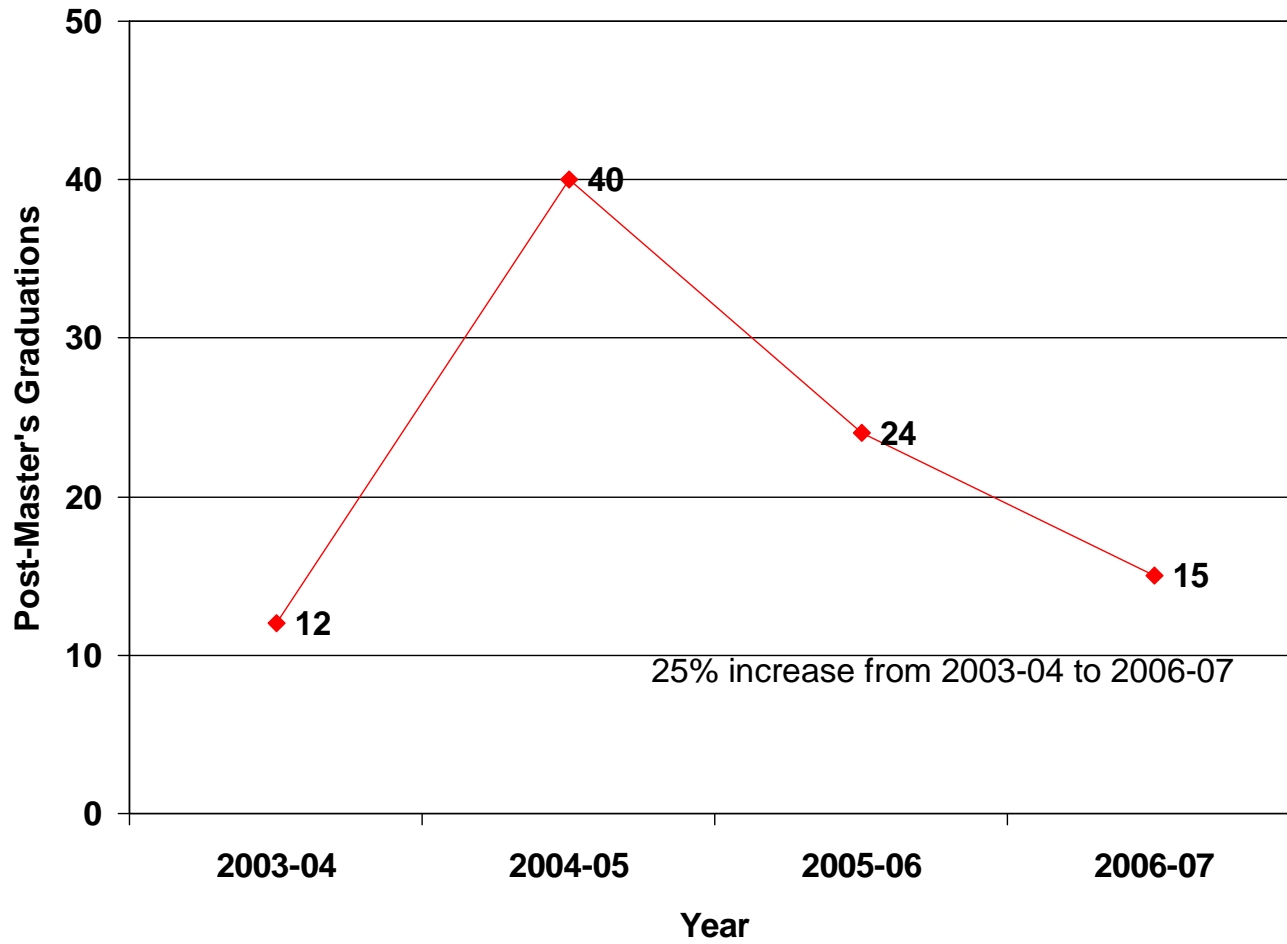


Table 2t. Master of Science in Nursing/Master of Science Degree and Post-Master's Certificate Enrollment and Graduation by Specialty

Specialty	Enrollment as of October 15, 2007		Graduates from October 16, 2006 – October 15, 2007	
	MSN/MS ^a	Post-Master's ^a	MSN/MS ^a	Post-Master's ^a
Nursing Administration	97	2	26	0
Clinical Nurse Leader	6	0	5	0
Clinical Research Management	1	0	0	0
Nursing Education	122	2	23	0
Holistic Health	21	1	0	0
Nurse Anesthesia	385	5	105	0
Nursing Informatics	23	0	5	0
Nurse Midwifery	24	3	11	0
Clinical Nurse Specialist:				
Adult	6	1	1	0
Medical-Surgical	3	0	1	0
Pediatric	7	1	1	0
Other CNS (specify)				
Adult NP/CNS	7	1	1	1
Homeland Security	2	0	3	0
Palliative, Critical Care	12	0	0	0
Nurse Practitioner:				
Acute Care	144	1	57	1
Adult	90	5	38	1
Family	745	15	177	5
Gerontological	20	0	11	1
Neonatal	28	0	21	2
Pediatric	75	2	39	0
Psychiatric-Adult	45	5	29	1
Psychiatric-Child/Adol	15	0	4	1
Women's Health	28	0	17	0
Other NP (specify)				
Adult/Geriatrics	1	0	0	0
Emergency	4	0	1	0
Family/Geriatrics	3	0	0	0
Pediatric Acute Care	9	0	5	1
Pediatrics NP/CNS	3	2	1	0
Dual Degree:				
MSN/MBA	14	0	1	0
Other (please specify):				
NMW/FNP	20	0	5	0
WHNP/ANP	20	0	3	0
SUBTOTAL	1980	46	591	14
TOTAL	2026		605	

^aAs Reported by Respondent

NOTE: These data are aggregate data of all schools, but do not reflect the reported number of enrolled students or graduates.

Table 2u. Initial RN Licensure Enrollment Demographics as of October 15, 2007

SCHOOLS	TE	Status		Gender		Race						
		FT	PT	F	M	AI/AN	Asian	Black	Hispanic	White	Other	NonUS
Associate Degree in Nursing												
Aquinas College	216	42	174	190	26	0	8	15	0	193	0	0
Chattanooga State Technical CC	256	256	0	217	39	0	9	14	1	231	1	0
Cleveland State Community College	149	149	0	130	19	0	2	4	1	139	3	0
Columbia State Community College	300	300	0	276	24	1	2	23	3	265	6	0
Dyersburg State Community College	144	32	112	132	12	1	0	17	3	123	0	0
Freed-Hardeman University	46	43	3	37	9	0	0	1	1	44	0	0
Jackson State Community College	344	344	0	296	48	0	0	27	1	313	3	0
Lincoln Memorial University	353	254	99	324	29	0	2	8	0	322	21	0
Motlow State Community College ^a	123	25	98	109	14	0	1	7	1	112	2	1
Northeast State Technical CC	34	10	24	32	2	0	1	0	1	32	0	0
Roane State Community College	261	164	97	222	39	0	6	10	0	240	5	0
Southern Adventist University	198	182	16	150	48	0	6	9	19	136	0	28
Southwest TN Community College	210	181	29	180	30	0	11	95	5	94	0	5
Tennessee State University	224	224	0	213	11	0	2	89	0	127	6	0
Walters State Community College	282	78	204	244	38	1	0	0	5	276	0	0
Subtotal	3140	2284	856	2752	388	3	50	319	41	2647	47	34
(continued)												

(continued)												
SCHOOLS	TE	Status		Gender		Race						
		FT	PT	F	M	AI/AN	Asian	Black	Hispanic	White	Other	NonUS
Bachelor of Science in Nursing Degree (Initial RN Licensure)												
Austin Peay State University	263	263	0	233	30	4	15	28	15	199	1	1
Baptist Memorial College of Health Sciences	324	215	109	302	22	1	8	106	1	195	13	0
Belmont University	326	311	15	302	24	2	5	15	2	286	12	4
Bethel College	62	62	0	58	4	0	0	7	2	50	0	3
Carson-Newman College	165	165	0	150	15	0	5	5	3	151	0	1
Cumberland University	139	137	2	120	19	1	1	6	2	124	5	0
East Tennessee State University	483	450	33	418	65	0	7	15	5	444	12	0
Fisk University	10	10	0	10	0	0	0	8	0	0	0	2
King College	96	96	0	86	10	0	1	0	0	90	2	3
Lipscomb University	71	68	3	64	7	0	0	3	1	62	0	5
Martin Methodist	20	20	0	17	3	1	0	0	0	19	0	0
Middle Tennessee State University	275	270	5	237	38	2	4	13	3	253	0	0
Milligan College	59	59	0	54	5	1	0	2	0	55	0	1
South College	51	51	0	47	4	0	0	3	0	48	0	0
Tennessee State University	110	110	0	90	20	0	1	68	1	20	20	0
Tennessee Technological University	116	116	0	105	11	0	0	1	0	113	2	0
Tennessee Wesleyan College	94	94	0	84	10	0	0	2	1	89	2	0
Trevecca Nazarene University	14	14	0	14	0	0	0	2	1	11	0	0
Union University	130	130	0	103	27	0	4	18	1	106	1	0
University of Memphis	434	385	49	393	41	1	14	122	6	288	3	0
UT Chattanooga	127	127	0	107	20	0	2	6	2	117	0	0
UT Health Science Center ^a	136	128	3	122	9	0	2	21	1	107	0	0
UT Knoxville	230	219	11	208	22	0	5	13	6	200	0	6
UT Martin	119	117	2	105	14	0	1	2	1	115	0	0
Subtotal	3854	3617	232	3429	420	13	75	466	54	3142	73	26
Master of Science in Nursing Degree for Initial RN Licensure												
UT Knoxville	40	38	2	36	4	0	3	1	0	30	0	6
Vanderbilt University	269	218	51	243	26	1	5	26	6	220	5	6
Subtotal	309	256	53	279	30	1	8	27	6	250	5	12
TOTAL	7303	6157	1141	6460	838	17	133	812	101	6039	125	72
PERCENTAGE		84.3%	15.6%	88.5%	11.5%	0.2%	1.8%	11.1%	1.4%	82.7%	1.7%	1.0%

^aAs reported by respondent

Table 2v. Initial RN Licensure Graduate Demographics from October 16, 2006-October 15, 2007

SCHOOLS	Total Graduates	Gender		Race						
		F	M	AI/AN	Asian	Black	Hispanic	White	Other	NonUS
Associate Degree in Nursing										
Aquinas College	95	81	14	0	0	5	0	89	0	1
Chattanooga State Technical CC	135	115	20	0	4	5	1	125	0	0
Cleveland State Community College	42	40	2	0	0	0	0	41	1	0
Columbia State Community College	90	83	7	0	0	4	0	85	1	0
Dyersburg State Community College	42	40	2	0	1	2	0	39	0	0
Freed-Hardeman University										
Jackson State Community College	116	102	14	0	1	6	0	99	0	0
Lincoln Memorial University	157	142	15	0	0	6	1	116	34	0
Motlow State Community College	55	51	4	0	1	3	0	49	2	0
Northeast State Technical CC										
Roane State Community College	121	103	18	1	1	1	0	117	1	0
Southern Adventist University	96	73	23	0	7	8	7	64	0	10
Southwest TN Community College	75	67	8	0	2	22	2	48	0	1
Tennessee State University	94	82	12	0	0	42	0	48	4	0
Walters State Community College	140	127	13	2	1	0	0	137	0	0
Subtotal	1258	1106	152	3	18	104	11	1057	43	12
(continued)										

(continued)										
SCHOOLS	Total Graduates	Gender		Race						
		M	F	AI/AN	Asian	Black	Hispanic	White	Other	NonUS
Bachelor of Science in Nursing Degree (Initial RN Licensure)										
Austin Peay State University	55	50	5	2	2	6	2	43	0	0
Baptist Memorial College of Health Sciences	111	97	14	0	1	41	0	66	3	0
Belmont University	67	60	7	1	1	2	0	60	3	0
Bethel College	14	13	1	0	0	3	0	11	0	0
Carson-Newman College	53	45	8	0	0	1	0	52	0	0
Cumberland University	70	60	10	0	0	2	1	58	9	0
East Tennessee State University	138	115	23	0	2	0	2	133	1	0
Fisk University										
King College	47	43	4	0	0	1	0	46	0	0
Lipscomb University	29	27	2	0	1	1	0	26	0	1
Martin Methodist										
Middle Tennessee State University	91	87	4	0	1	3	1	86	0	0
Milligan College	22	20	2	0	0	2	0	20	0	0
South College	20	19	1	0	0	1	0	19	0	0
Tennessee State University	39	36	3	0	2	20	0	11	6	0
Tennessee Technological University	43	41	2	1	0	2	0	39	1	0
Tennessee Wesleyan College	39	35	4	0	0	1	0	38	0	0
Trevecca Nazarene University										
Union University	89	69	20	0	4	9	0	75	1	0
University of Memphis	130	116	14	2	1	24	1	102	0	0
UT Chattanooga	51	46	5	0	2	4	0	45	0	0
UT Health Science Center	31	28	3	0	1	7	0	23	0	0
UT Knoxville	99	85	14	1	0	3	2	91	0	2
UT Martin	25	24	1	0	0	2	0	22	0	1
Subtotal	1263	1116	147	7	18	135	9	1066	24	4
Master of Science in Nursing Degree for Initial RN Licensure										
UT Knoxville	17	12	5	0	0	0	0	16	0	1
Vanderbilt University ^a	117	106	11	1	1	9	4	116	8	0
Subtotal	134	118	16	1	1	9	4	132	8	1
TOTAL	2655	2340	315	11	37	248	24	2255	75	17
PERCENTAGE		88.1%	11.9%	0.4%	1.4%	9.3%	0.9%	84.9%	2.8%	0.6%

^aAs reported by respondent

Table 2w. Doctoral Degree Program Available Degrees and Specialty Focus as of October 15, 2007

SCHOOLS	Type of Degree		Specialty Focus				
	PhD	DNP	Administration	Clinical Practice	Education	Research	Other (please specify)
Doctoral Degree							
East Tennessee State University	✓					✓	
UT Health Science Center	✓	✓		✓		✓	
UT Knoxville	✓				✓	✓	Homeland Security
Vanderbilt University	✓					✓	

Table 2x. Doctoral Degree Enrollment Demographics as of October 15, 2007

SCHOOLS	TE	Status		Gender		Race						
		FT	PT	F	M	AI/AN	Asian	Black	Hispanic	White	Other	NonUS
PhD												
East Tennessee State University	26	6	20	24	2	1	0	2	0	21	2	0
UT Health Science Center	31	31	0	29	2	0	1	10	0	20	0	0
UT Knoxville	27	13	14	22	5	0	1	2	0	23	0	1
Vanderbilt University	25	25	0	20	5	0	0	2	0	21	0	2
Subtotal	109	75	34	95	14	1	2	16	0	85	2	3
DNP												
UT Health Science Center ^a	118	118	0	105	13	0	1	16	7	92	0	0
TOTAL	227	193	34	200	27	1	3	32	7	177	2	3
PERCENTAGE		85.0%	15.0%	88.1%	11.9%	0.4%	1.3%	14.1%	3.1%	78.0%	0.9%	1.3%

^aAs reported by respondent

Table 2y. Doctoral Degree Graduate Demographics from October 16, 2006-October 15, 2007

SCHOOLS	Total Graduates	Gender		Race							
		F	M	AI/AN	Asian	Black	Hispanic	White	Other	NonUS	
PhD											
East Tennessee State University	1	1	0	0	0	0	0	1	0	0	
UT Health Science Center	3	3	0	0	0	3	0	0	0	0	
UT Knoxville	4	4	0	0	0	0	0	4	0	0	
Vanderbilt University	3	3	0	0	0	0	0	3	0	0	
Subtotal	11	11	0	0	0	3	0	8	0	0	
DNP											
UT Health Science Center	7	5	2	0	0	0	0	7	0	0	
TOTAL	18	16	2	0	0	3	0	15	0	0	
PERCENTAGE		88.9%	11.1%	0.0%	0.0%	16.7%	0.0%	83.3%	0.0%	0.0%	

Table 2z. Doctoral Degree Enrollment (as of October 15th of Each Year) Trends

SCHOOLS	Enrollment Trends			
	2004	2005	2006	2007
East Tennessee State University	15	20	21	26
UT Health Science Center	58	88	125	149
UT Knoxville	21	29	29	27
Vanderbilt University	20	20	26	25
TOTAL	114	157	201	227
PERCENT CHANGE		37.7%	28.0%	12.9%

Figure 2z. Doctoral Degree Enrollment Trend Line

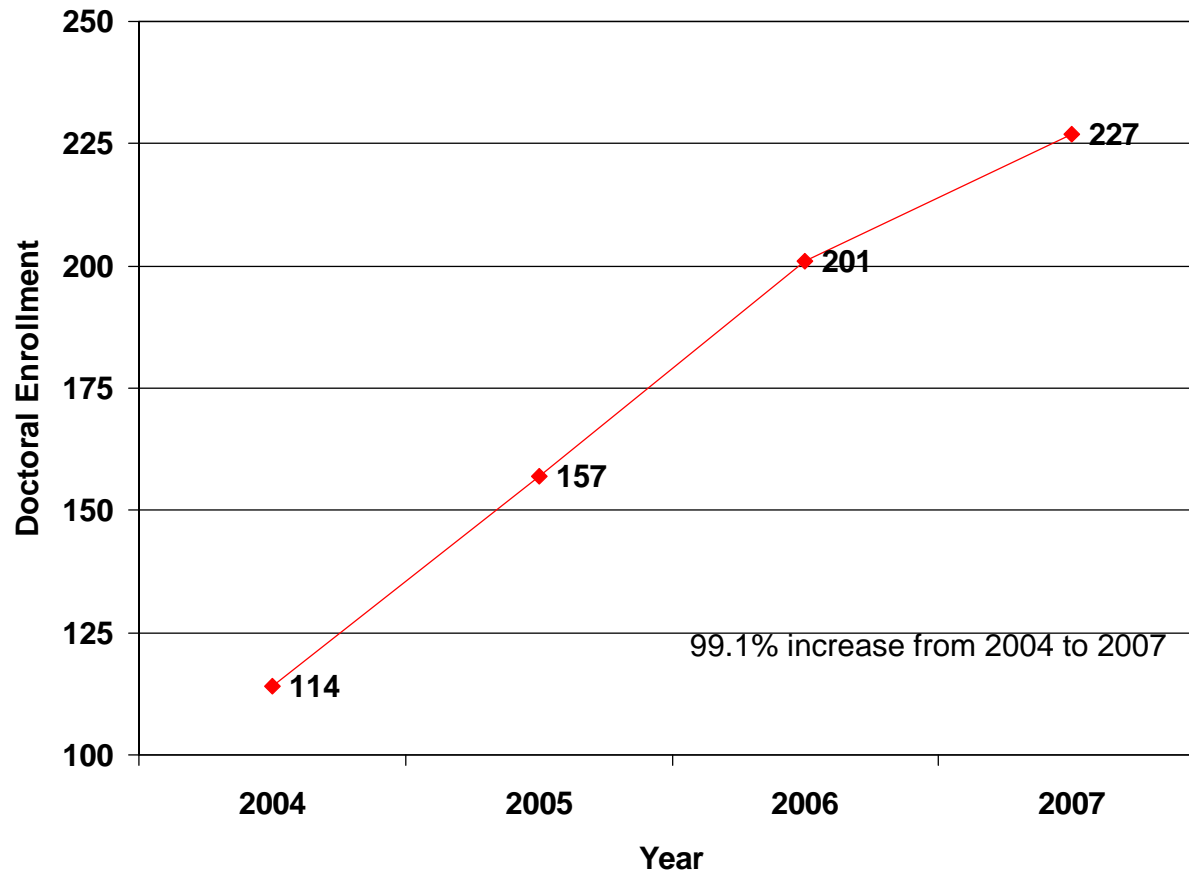


Table 2aa. Doctoral Degree Graduation Trends

SCHOOLS	Graduation Trends			
	2003-2004	2004-2005	2005-2006	2006-2007
East Tennessee State University	0	1	2	1
UT Health Science Center	9	21	8	10
UT Knoxville	3	3	5	4
Vanderbilt University	6	1	2	3
TOTAL	18	26	17	18
PERCENT CHANGE		44.4%	(34.6%)	5.9%

Figure 2aa. Doctoral Degree Graduation Trend Line

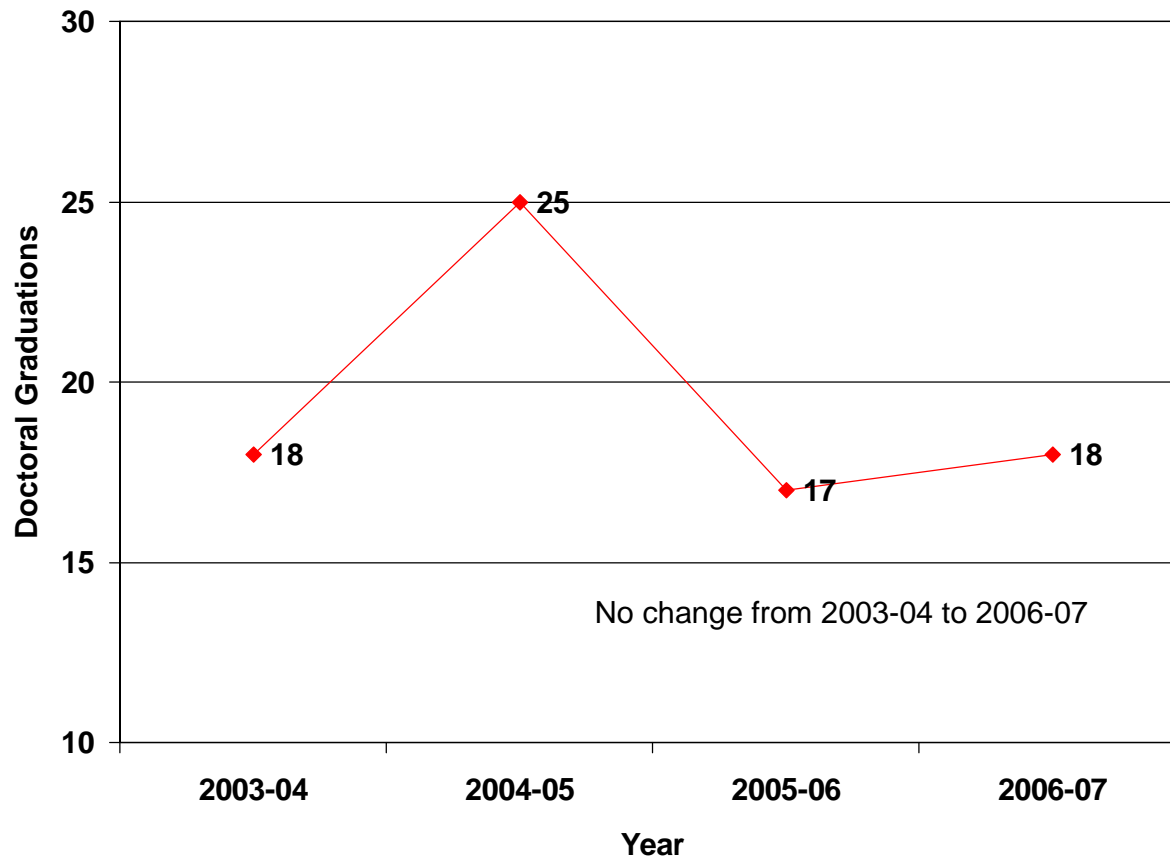


Table 2bb. Number of Programs Reporting Significant Change (>10%) in Enrollment since October 15, 2006

Program	Number of Programs	Number Programs with Significant Change (>10%)	
		Increase	Decrease
Associate Degree in Nursing	15	2	
Bachelor of Science in Nursing Degree	28	12	1
Master of Science in Nursing Degree	16	11	
Post-Master's Certificate ^a	13	3	
Master of Science	1		
Doctoral Degree	4		
TOTAL	63	28	1

^aNot included in total number of programs because already counted in Master's Degree

3. AVAILABILITY OF CLINICAL RESOURCES

Table 3a. Number of Schools Reporting Adequate Clinical Resources Available to Meet Needs of Undergraduate Curriculum by Specialty as of October 15, 2007

Specialty	Number of Schools Reporting Adequate Resources n(%) of 41	Number of Schools Reporting Inadequate Resources n(%) of 41	Number of Schools Reporting Resources Not Applicable n(%) of 41	Number of Schools Not Reporting Data n(%) of 41
Medical/Surgical Nursing	36 (87.8)	2 (4.9)	2 (4.9)	1 (2.4)
Psychiatric/Mental Health Nursing	34 (82.9)	3 (7.3)	3 (7.3)	1 (2.4)
Geriatric Nursing	34 (82.9)	1 (2.4)	5 (12.2)	1 (2.4)
Maternal/Neonatal Nursing	30 (73.2)	7 (17.1)	3 (7.3)	1 (2.4)
Pediatric Nursing	25 (61.0)	12 (29.3)	3 (7.3)	1 (2.4)
Community Health Nursing	32 (78.0)	2 (4.9)	6 (14.6)	1 (2.4)
Other (please specify):				
Acute Critical Care	1 (2.4)			
Fundamentals		1 (2.4)		
Home Health	1 (2.4)			
ICU	1 (2.4)			
Intensive Care Nursery		1 (2.4)		
Leadership	1 (2.4)			
Leadership and Management	1 (2.4)			
Nurse Anesthesia	1 (2.4)			

**Table 3b. Main Factors Perceived as Creating the Limited Clinical Resources
as of October 15, 2007**

Number of Schools reporting at least one inadequate resource available reported in Table 3a.	15 of 41 (36.6%)			
	Rank 1	Rank 2	Rank 3	Marked but not ranked
Number of Schools that Ranked the Main factors perceived as creating limited clinical resources^a				
Too Many Professional Nursing Students	7	3	1	1
Too Many Practical Nursing Students	4	3	0	0
Poor Scheduling/Coordination	2	3	1	1
Agencies Not Responsive to Needs of School	1	0	1	0
Clinical Resources Not Available in the Community	5	4	1	2
Other (please specify):				
Only one inpatient pediatric facility	1	0	0	0
Too many associate degree programs in the area admit large cohorts	0	0	1	0
Too many new schools starting up and taking clinical sites	0	0	1	0
Too many students from various disciplines	0	1	0	0
We sometimes run short on OB/Women's health sites	1	0	0	0
While clinical sites have been found, the rural nature of the area does limit the number and proximity of choices	1	0	0	0

^aRespondents were asked to rank as 1 being the most important

**Table 3c. Average Faculty-Student (Undergraduate)
Clinical Ratio as of October 15, 2007**

Average Ratio	Ratio Range
1:8	1:6 – 1:10

4. PROGRAM EVALUATION

Table 4a. Average Retention Rates of Each Class of Graduates from October 16, 2006 – October 15, 2007

“Retention Rate” is defined as the percentage of the class (admitted to the nursing program) completing the nursing program within 150% of the required length of the program, e.g., completing a four semester program within six semesters, a five semester program within seven semesters, or a six semester program within nine semesters.

Program	Number of Programs	Number of Programs Reporting	Average Retention Rate (%)	Retention Rate Range (%)
Associate Degree	15	13	74.8	50-92
Basic BSN	24	21	85.7	53-100
Accelerated Second-Degree BSN	6	5	95.6	90-100
LPN-BSN	9	4	93.8	95-100
RN-BSN	22	16	85.1	35-100
Non-RN to MSN (Initial RN Licensure)	2	2	92.5	90-95
Basic MSN	16	10	93.3	85-100
ADN/Diploma RN to MSN	6	1	90.0	N/A
Basic MS	1	0	N/A	N/A

Table 4b. Summary of Assessment/Proficiency Test of Exiting Undergraduate Students as of October 15, 2007

Number of Schools Requiring an Assessment/Proficiency Test	37 of 41 (90.2%)
Type of Test	Number of Schools
HESI	19
ATI	11
Evolve Reach	3
ERI	3
NLN	2
NLC	1
TOTAL	39^a

^aSome schools use more than one type of test

Table 4c. Number of Schools Reporting Relationship between Assessment and NCLEX Pass Rate

Number of Schools Reporting Relationship	27 of the 37 Schools (73.0%) that require an Assessment/Proficiency Test in Table 4b. reported a relationship with the NCLEX pass rate.
--	---

5. FACULTY SUMMARY

Table 5a. Number of Full-time and Part-time (Headcount and FTE) Faculty by School as of October 15, 2007

School	Programs offered	Nursing Faculty				Non-Nursing Faculty			
		FT	PT (HC ^a)	PT (FTE)	Total ^b	FT	PT (HC ^a)	PT (FTE)	Total ^b
Aquinas College	ADN/BSN	12	26	-	38	-	-	-	-
Austin Peay State University	BSN/MSN/Post Masters	18	17	-	35	-	-	-	-
Baptist Memorial College of Health Sciences	BSN	25	16	4.6	41	-	-	-	-
Belmont University	BSN/MSN/Post Masters	20	36	10.3	56	-	-	-	-
Bethel College	BSN	6	2	0.4	8	-	-	-	-
Carson-Newman College	BSN/MSN/Post Masters	14	16	7	30	-	-	-	-
Chattanooga State Technical CC	ADN	17	6	4	23	-	-	-	-
Cleveland State Community College	ADN	9	10	-	19	-	-	-	-
Columbia State Community College	ADN	10	17	8.5	27	-	-	-	-
Cumberland University	BSN	9	1	-	10	-	1	-	1
Dyersburg State Community College	ADN	11	6	-	17	-	-	-	-
East Tennessee State University	BSN/MSN/Post Masters/Doc	52	13	7.3	65	1	-	-	1
Fisk University ^g	BSN								
Freed-Hardeman University	ADN	5	-	-	5	-	-	-	-
Jackson State Community College	ADN	21	6	2	27	-	-	-	-
King College	BSN/MSN	14	13	.	27	-	-	-	-
Lincoln Memorial University	ADN/BSN/MSN	22	3	0.8	25	-	-	-	-
Lipscomb University ^g	BSN								
Martin Methodist	BSN	5	-	-	5	-	-	-	-
Middle Tennessee School of Anesthesia	MS	3	13	3.5	16	1	3	.25	4
Middle Tennessee State University	BSN/MSN/Post Masters	26	11	-	37	-	-	-	-
Milligan College	BSN	5	6	-	11	-	-	-	-
Motlow State Community College	ADN	11	7	-	18	-	-	-	-
Northeast State Technical CC	ADN	3	1	0.5	4	-	-	-	-
Roane State Community College	ADN	17	11	4	28	-	-	-	-
South College	BSN	6	4	3	10	-	-	-	-
Southern Adventist University	ADN/BSN/MSN/Post Masters	15	2	1.5	17	-	1	0.5	1
Southwest TN Community College	ADN	11	10	5.6	21	-	-	-	-

(continued)

(continued)									
School	Programs offered	Nursing Faculty				Non-Nursing Faculty			
		FT	PT (HC^a)	PT (FTE)	Total^b	FT	PT (HC^a)	PT (FTE)	Total^b
Tennessee State University	ADN/BSN/MSN/Post Masters	30	8	-	38	1	-	-	1
Tennessee Technological University	BSN/MSN	10	11	-	21	-	-	-	-
Tennessee Wesleyan College	BSN	8	6	-	14	-	-	-	-
Trevecca Nazarene University ^h	BSN								
Union University	BSN/MSN/Post Masters	27	5	29.0	32	-	-	-	-
University of Memphis	BSN/MSN/Post Masters	37	29	11.3	66	-	-	-	-
University of Phoenix	BSN	1	7	-	8	-	2	-	2
UT Chattanooga	BSN/MSN/Post Masters	20	7	2.2	27	-	-	-	-
UT Health Science Center	BSN/MSN/Post Masters/Doc	32	7	3.1	39	1	-	-	1
UT Knoxville	BSN/MSN/Post Masters/Doc	42	16	5.4	58	1	2	0.6	3
UT Martin	BSN	13	1	-	14	-	-	-	-
Vanderbilt University	MSN/Post Masters/Doc	103	21	7.9	124	5	1	0.6	6
Walters State Community College	ADN	18	18	9.2	36	-	-	-	-
TOTAL		708^c	389^d	131.1^e	1097^f	10^c	10^d	1.95^e	20^f

^aHC=Headcount

^bTotal includes FT and PT (HC)

^cTotal Full-time Faculty (Nursing and Non-Nursing): 708+10=718

^dTotal Part-time (Headcount) Faculty (Nursing and Non-Nursing): 389+10=399

^eTotal part-time (FTE) Faculty (Nursing and Non-Nursing): 131.1+1.95=133.05

^fTotal Faculty (Nursing and Non-Nursing): 1097+20=1117

^gFisk University and Lipscomb University utilizes faculty from Vanderbilt University

^hTrevecca Nazarene University utilizes faculty from Belmont University

Table 5b. Faculty Status Demographics Summary of All Schools as of October 15, 2007

Race ^a	Nursing Faculty			Non-Nursing Faculty		
	FT	PT	Total	FT	PT	Total
American Indian/Alaskan Native	3	1	4	0	0	0
Asian/Pacific Islander	7	1	8	0	0	0
Black, Non-Hispanic	71	30	101	0	0	0
Hispanic	6	17	23	0	0	0
White, Non-Hispanic	622	338	960	10	10	20
Other Race/Unknown	0	0	0	0	0	0
Non-U.S. Resident	0	0	0	0	0	0
TOTAL	709	387	1096	10	10	20
Gender^a						
Female	669	351	1020	4	5	9
Male	39	36	75	6	5	11
TOTAL	708	387	1095	10	10	20

^aAs reported by respondent

Table 5c. Number of Budgeted Unfilled Full-time Nurse Faculty Positions for 2007-2008 Academic Year by Specialty

Number of Schools Reporting Budgeted Unfilled Full-time Nurse Faculty Positions	19 of 41 Schools (46.3%) ^a
Specialty	Number of Budgeted Unfilled Full-time Nursing Faculty Positions
Medical/Surgical Nursing	20
Psychiatric/Mental Health Nursing	9
Adult Health Nursing	5
Community Health	5
Maternal/Infant Nursing	4
Pediatric Nursing	3
Other (please specify):	
Holistic	3
FNP	2
Senior Research Faculty	2
DNP Program Director	1
FNP Option Coordinator	1
TOTAL	55

^aOf the 19 institutions reporting budgeted unfilled full-time nurse faculty positions, 12 (63.2%) are Public Institutions and 7 (36.8%) are Private Institutions.

**Table 5d. Number of Full-time Faculty Who Retired or Resigned
During 2006-2007 Academic Year**

Retired Faculty	
Total Number of Schools Reporting Nurse Faculty Retirement	13 of 41 Schools (31.7%)
Number of Retired Nurse Faculty	18
Faculty Resignations	
Total Number of Schools Reporting Nurse Faculty Resignations	21 of 41 Schools (51.2%)
Reason for Resignation	Number of Resigned Faculty
Return to Clinical Practice	16
Career Advancement	15
Salary/Benefits	8
Family Responsibilities	5
Relocation of Spouse	3
Workload Issues	3
Unknown	3
Other (please specify):	
Dismissed	2
Contract not renewed	1
Health reasons	1
Other	1
Return to school	1
TOTAL	59

Table 5e. Summary of Faculty Teaching Responsibilities Outside Area of Master's Specialization as of October 15, 2007

Number of Schools that have faculty teaching responsibilities outside their area of master's specialization.	24 of 41 Schools (58.5%)
Types of Courses	Number of Schools
Didactic	2
Clinical	3
Both	17
Unspecified	2
TOTAL	24
Areas in which you do not have faculty with master's specialization	
Psychiatric/Mental Health	5
Community Health	5
Pediatrics	4
Maternal/Newborn/Child Health	4
Adult Health	2
Lab Coordinator	2
Women's Health	1
TOTAL	23

Table 5f. Summary of Schools that have Insufficient Faculty to Conduct Program

Number of Schools reporting insufficient faculty to conduct program	16 of 41 Schools (39.0%)
Primary reason for insufficient faculty^a	Number of Schools
Lack of qualified applicants	10
Salary levels	9
Lack of budgeted positions	7
Competition for resources	4
Geographic location of program	2
Other (specify):	
Nurse administrators who are looking for a change	1
TOTAL	33

^aNot mutually exclusive